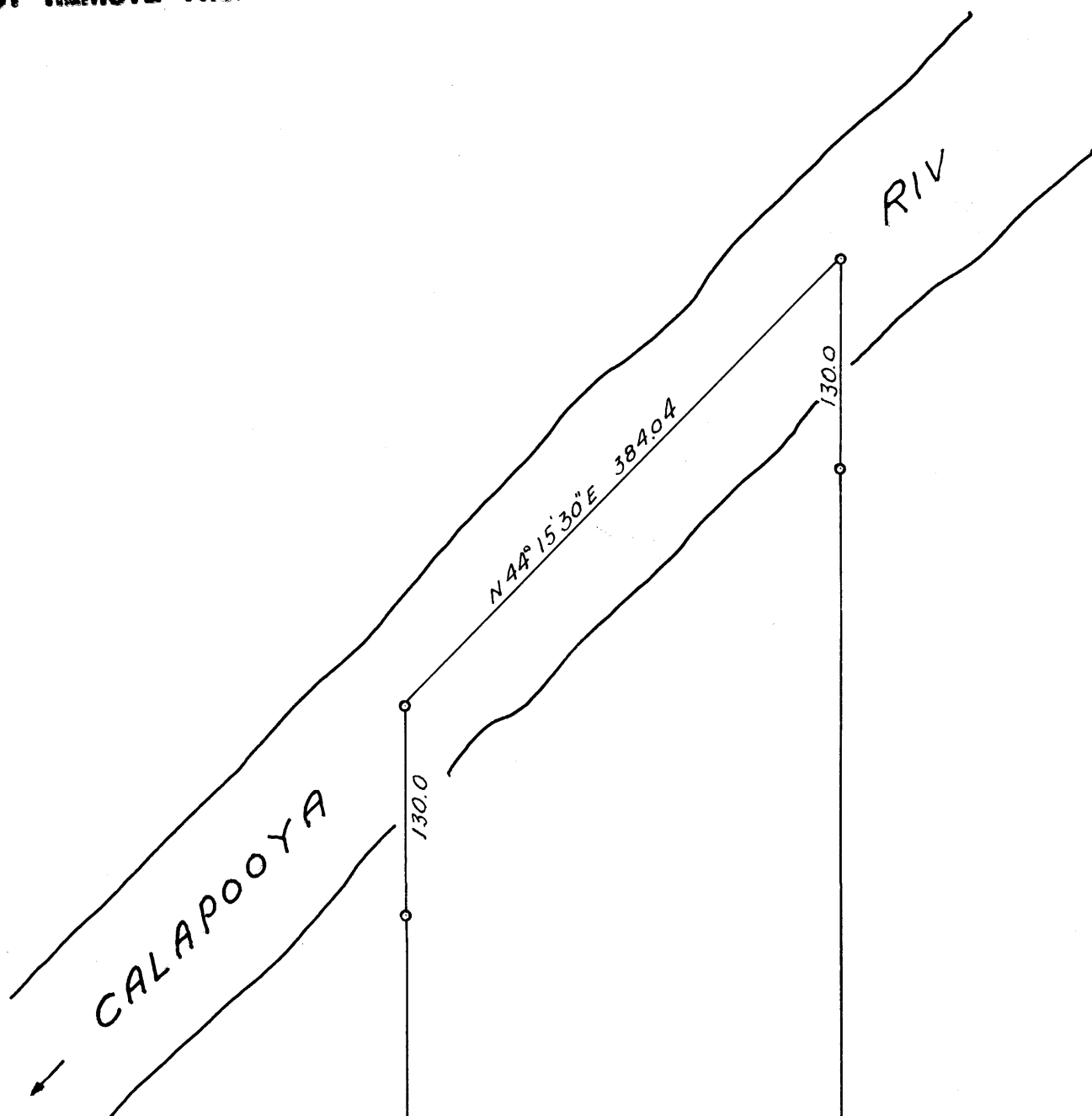


COUNTY SURVEYORS FILE  
DO NOT REMOVE FROM



NOVEMBER 1952  
1"=100'

FRED L. DOW  
C.E.

9.49 Ac

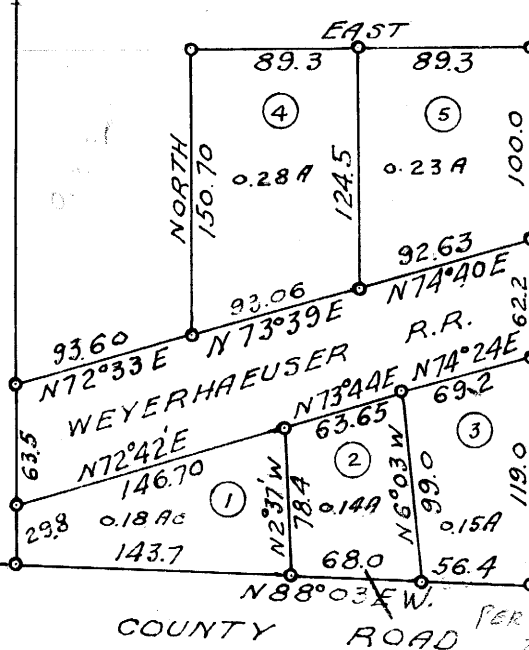
N 0° 01' W 1400.96

S 0° 01' E 1497.2

⑥

SW CORNER CLINTON SUTHERLIN  
D.L.C. No. 49, SEC. 9, T. 25S. R. 4W. W.M.

N 89° 04' W 647.18



FILED  
RECEIVED

MAR 20 1958

COUNTY SURVEYOR  
DOUGLAS COUNTY, ORE.

PER M 21-14  
Z.A. 3/24