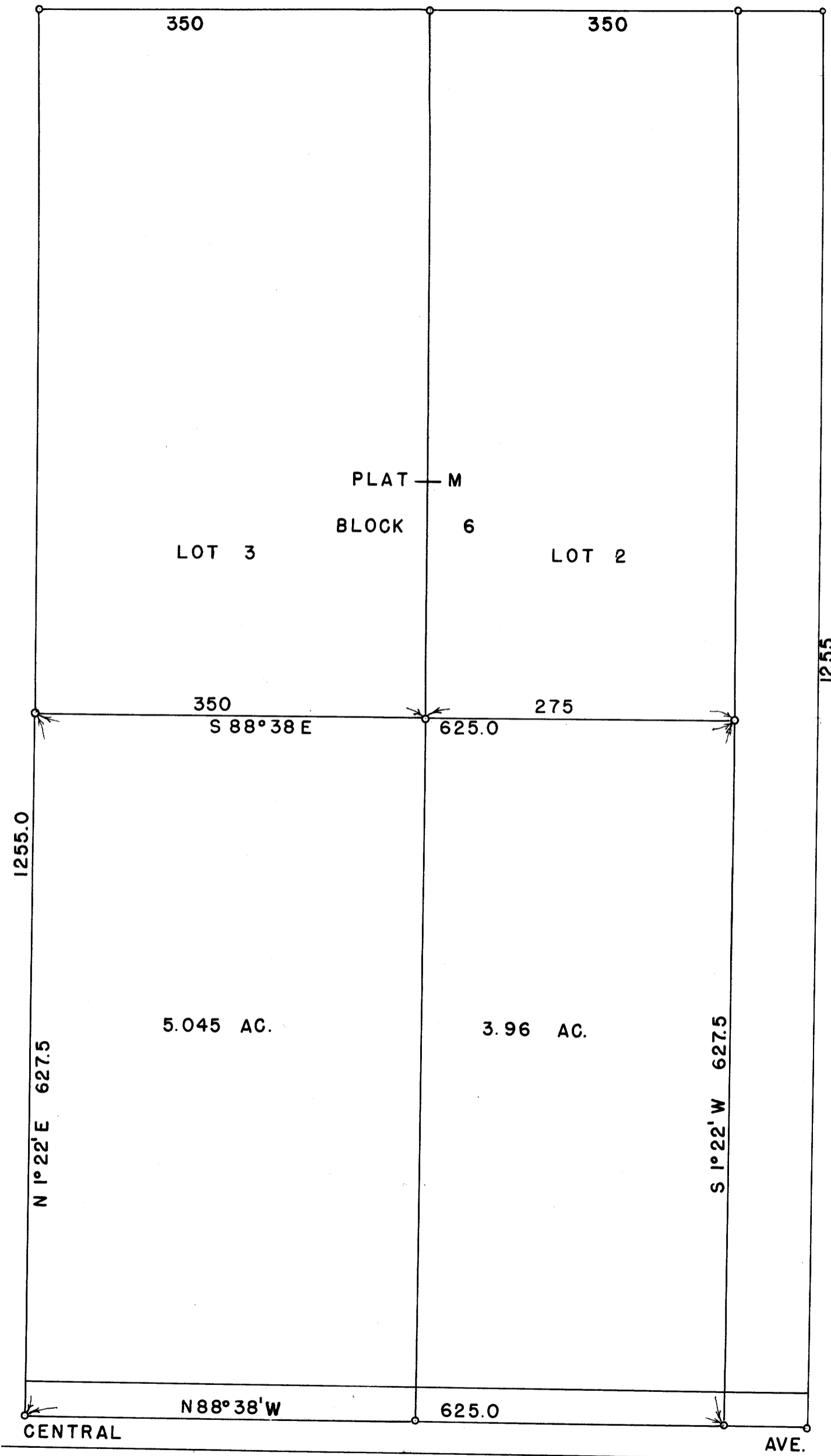
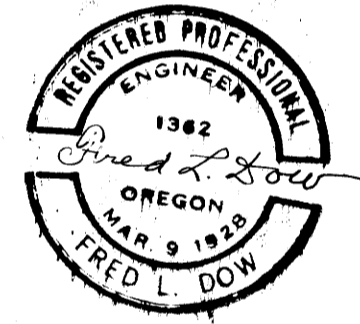


19-6 W

COUNTY SURVEYORS FILE  
DO NOT REMOVE FROM FILE



E. J. SMITH  
SUTHERLIN  
OCTOBER, 1952 FRED L. DOW  
1" = 100' C.E.



FILED  
RECEIVED

MAR 2 1958

COUNTY SURVEYOR  
CLATSOP COUNTY, ORE.

MAP FILE M9-61