

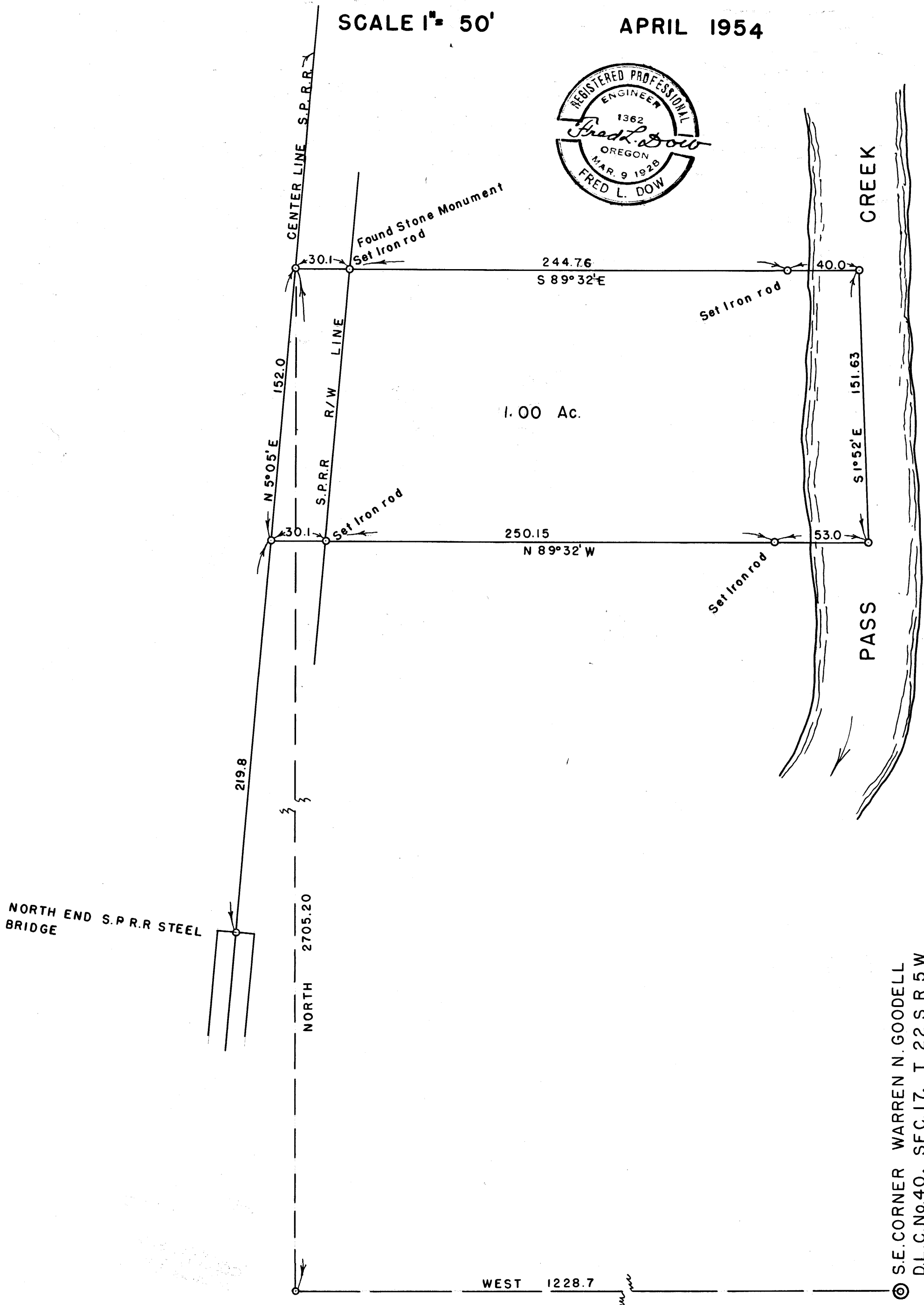
LS-6W  
06/50 '57

COUNTY SURVEYORS FILE  
DO NOT REMOVE FROM

# ALLAN McDONALD DRAIN SECTION 17, T. 22 S. R. 5 W.

SCALE 1" = 50'

APRIL 1954



SE. CORNER WARREN N. GOODELL  
D.L.C. No. 40, SEC. 17, T. 22 S. R. 5 W.

FILED  
RECEIVED

MAR 23 1958

COUNTY SURVEYOR  
DOUGLAS COUNTY, ORE.  
MAP FILE M 9-57

c.s. 50/90