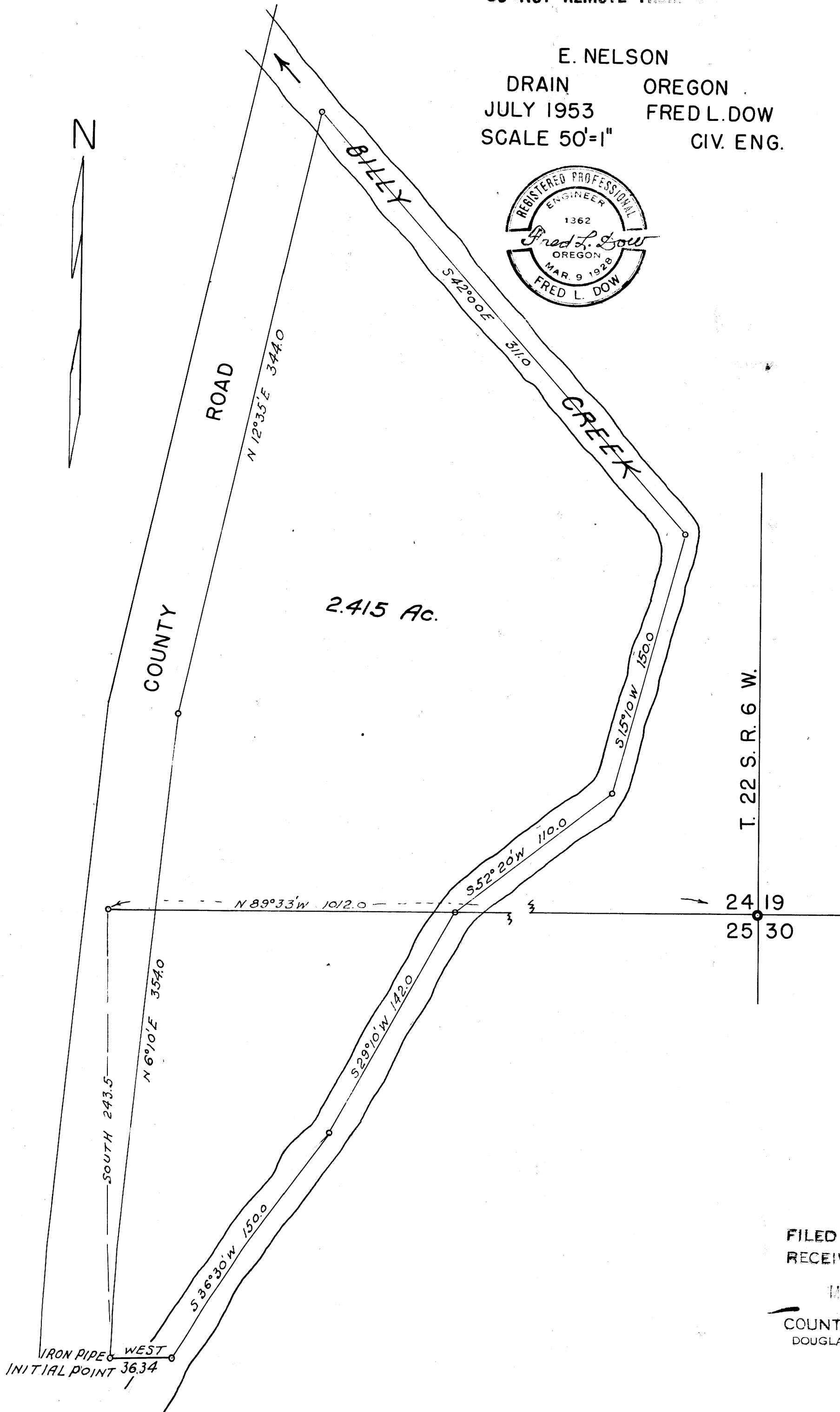
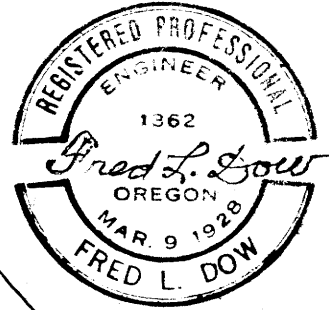


COUNTY SURVEYORS FILE
DO NOT REMOVE FROM

E. NELSON
DRAIN OREGON
JULY 1953 FRED L. DOW
SCALE 50'=1" CIV. ENG.



FILED
RECEIVED

MAR 2 1953

COUNTY SURVEYOR
DOUGLAS COUNTY, ORE.

MAP FILE M 9-56