

COUNTY SURVEYOR
DO NOT REMOVE FROM FILE

D. R. McMILLAN
DRAIN OREGON
MAY 1953 FRED L. DOW
SCALE 1"=100' C.E.

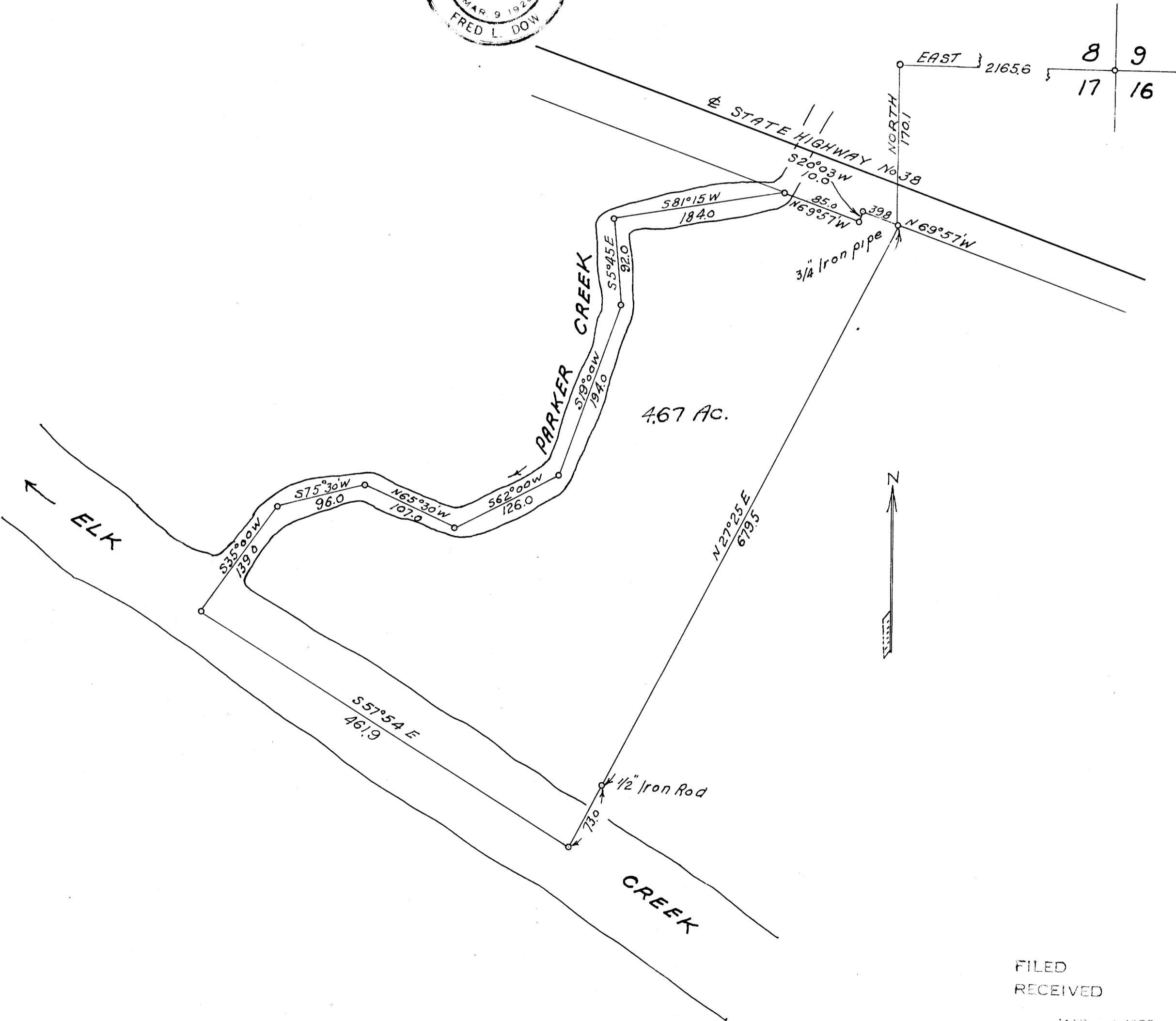
FILED
RECEIVED

JUL 24 1953

COUNTY SURVEYOR
DOUGLAS COUNTY, ORE.



T. 22 S. R. 6 W.



4.67 AC.

ELK

PARKER CREEK

CREEK

STATE HIGHWAY No 38

3/4 Iron pipe

1/2 Iron Rod

FILED
RECEIVED

MAR 20 1958

COUNTY SURVEYOR
DOUGLAS COUNTY, ORE.