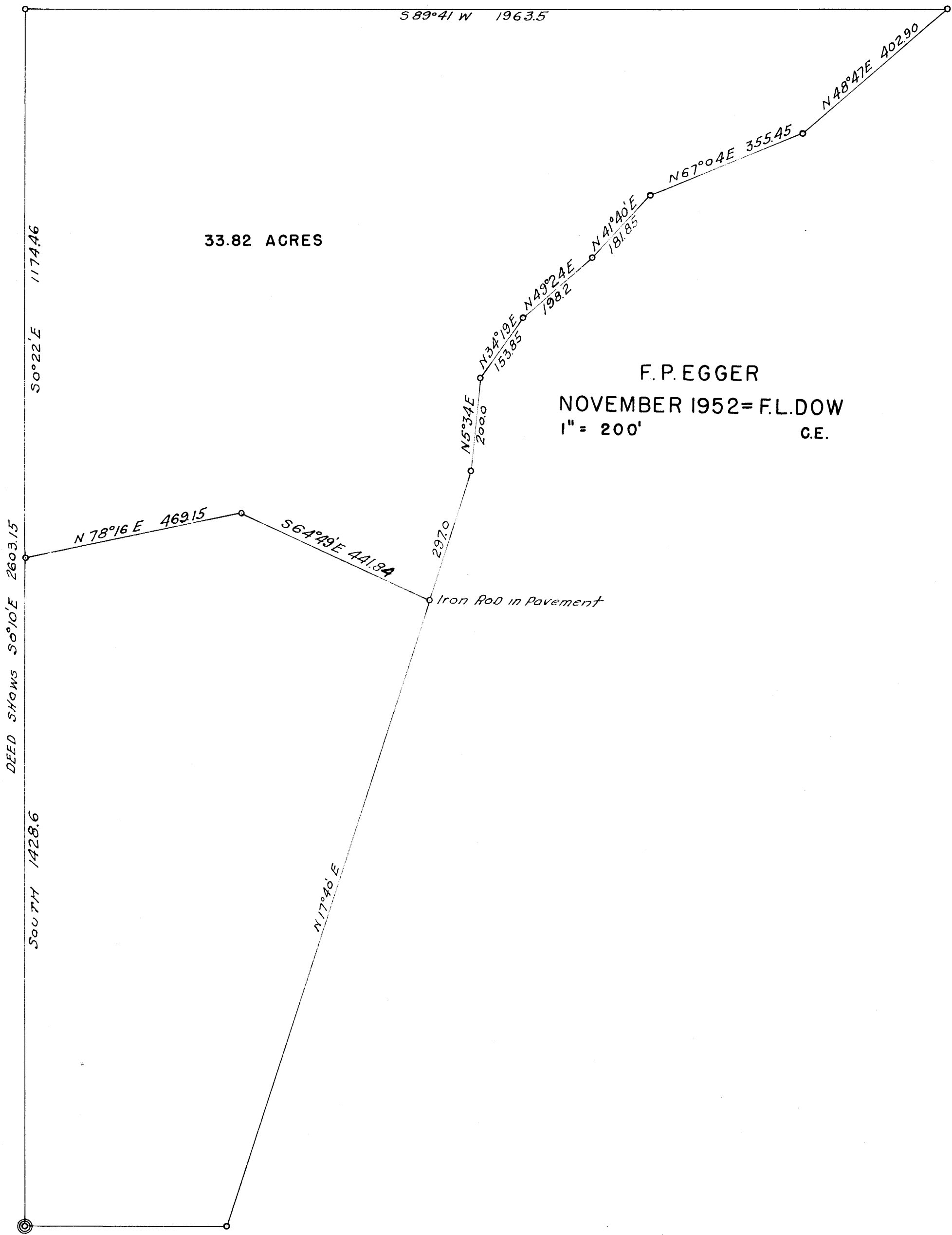


M 9-54



33.82 ACRES

F. P. EGGER
NOVEMBER 1952 = F. L. DOW
1" = 200' C.E.

DEED SHOWS S 0° 10' E 2603.15

SOUTH 1428.6

Iron Rod in Pavement

ONE QUARTER CORNER SOUTH LINE SECTION 32, T. 23 S. R. 5 W.

FILED
RECEIVED

MAR 23 1958

COUNTY SURVEYOR
DOUGLAS COUNTY, ORE.

COUNTY SURVEYORS FILE
DO NOT REMOVE FROM FILE

MAP FILE M 9-54