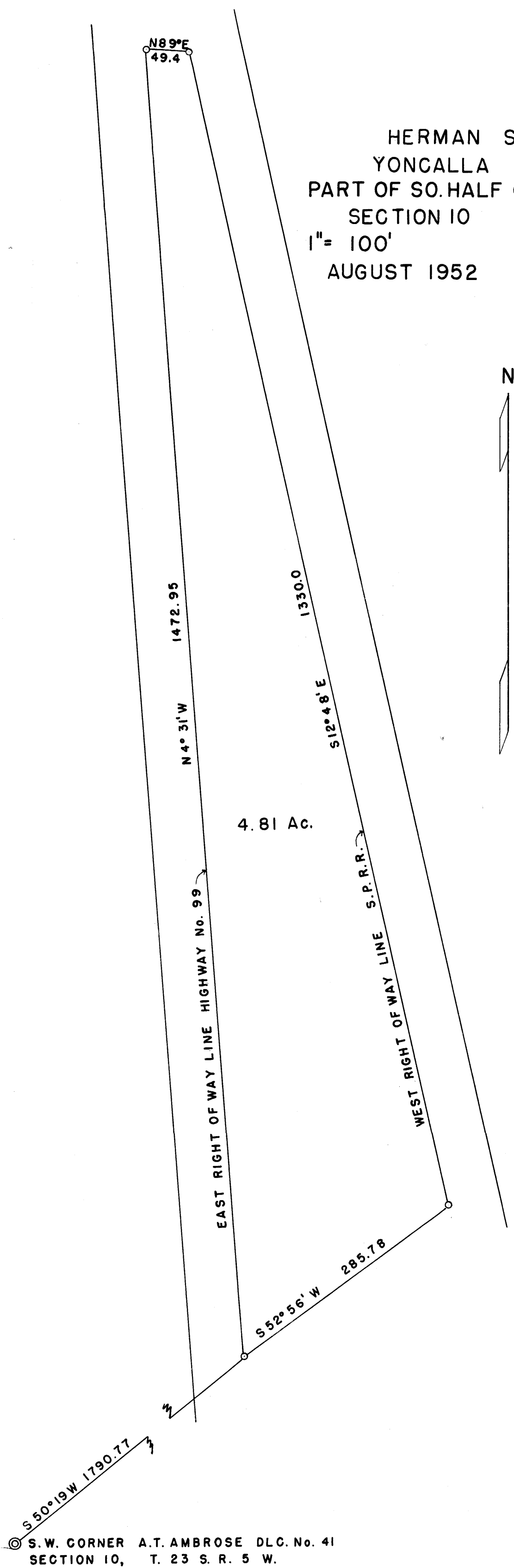


DO NOT REMOVE FROM OFFICE

HERMAN SCHOSSO
YONGALLA OREGON
PART OF SO. HALF OF D.L.C. NO. 41
SECTION 10 T. 23 S. R. 5 W.
1" = 100'
AUGUST 1952
FRED L. DOW
CIV. ENGINEER



© S.W. CORNER A.T. AMBROSE D.L.C. No. 41
SECTION 10, T. 23 S. R. 5 W.

FILED
RECEIVED
MAR 2 1958
COUNTY SURVEYOR
DOUGLAS COUNTY, ORE.