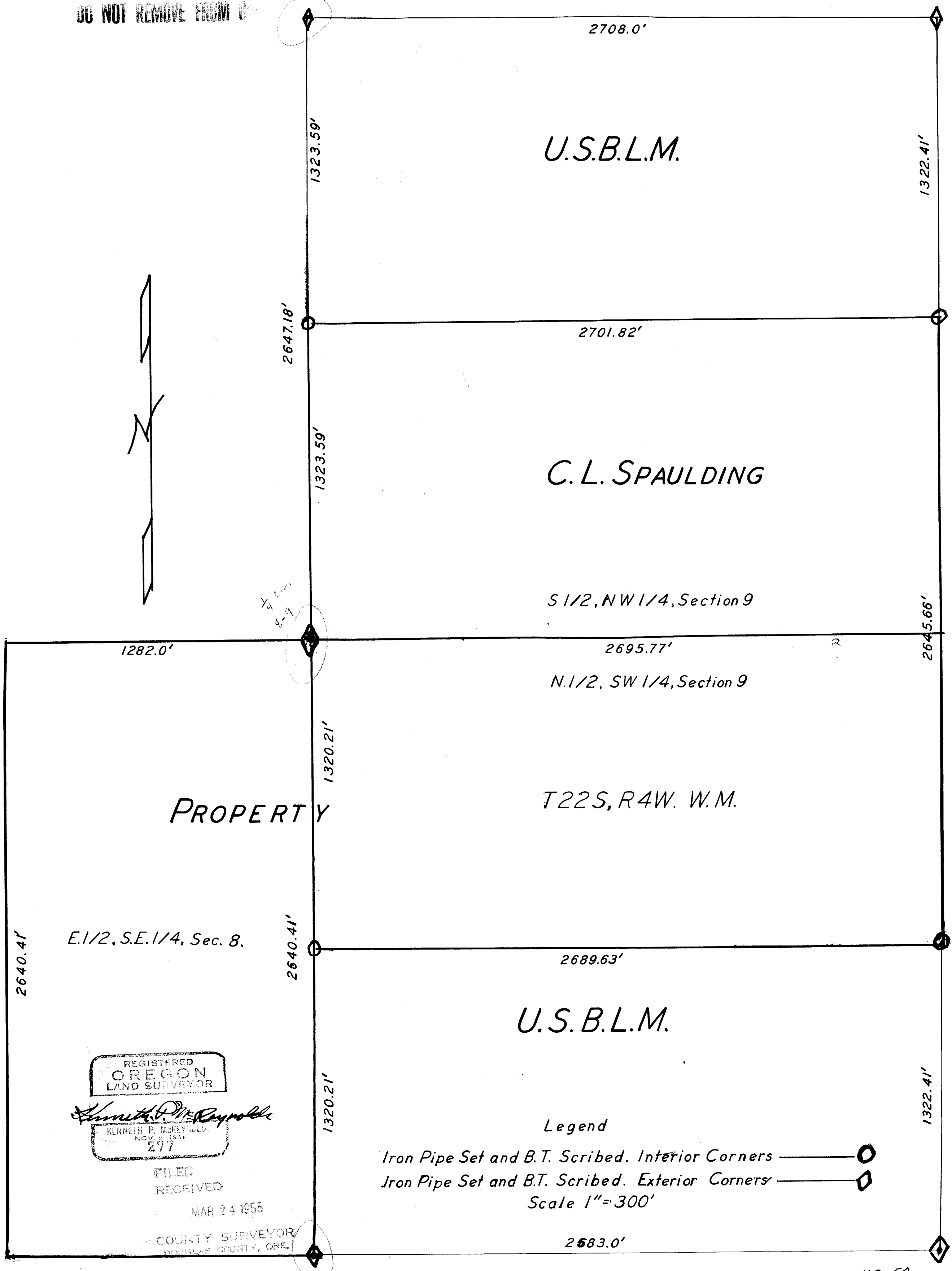


COUNTY SURVEYOR'S FILE NO.
DO NOT REMOVE FROM FILE



U.S.B.L.M.

C.L. SPAULDING

S 1/2, NW 1/4, Section 9

N. 1/2, SW 1/4, Section 9

T22S, R4W, W.M.

PROPERTY

E. 1/2, S.E. 1/4, Sec. 8.

U.S.B.L.M.

REGISTERED
OREGON
LAND SURVEYOR

Kenneth P. McReynolds

KENNETH P. McREYNOLDS
NOV. 8, 1951
277

FILED
RECEIVED

MAR 24 1955

COUNTY SURVEYOR
DOUGLAS COUNTY, ORE.

Legend

Iron Pipe Set and B.T. Scribed. Interior Corners

Iron Pipe Set and B.T. Scribed. Exterior Corners

Scale 1"=300'