

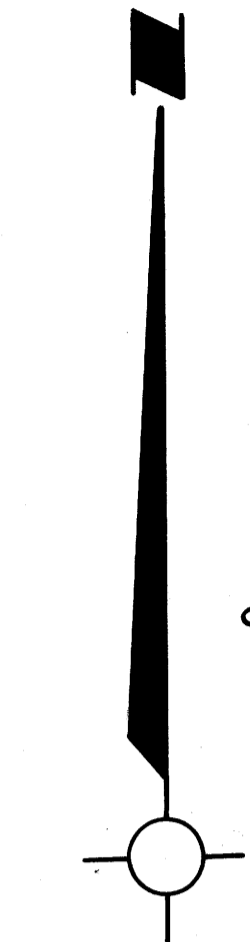
NOT RECORDED

HAIL'S HARBOR

IN SECTION 17, TWP 22 S., RG. 10 W. WM.
BEN B. IRVING REGISTERED CIVIL ENGINEER
ROSEBURG OREGON

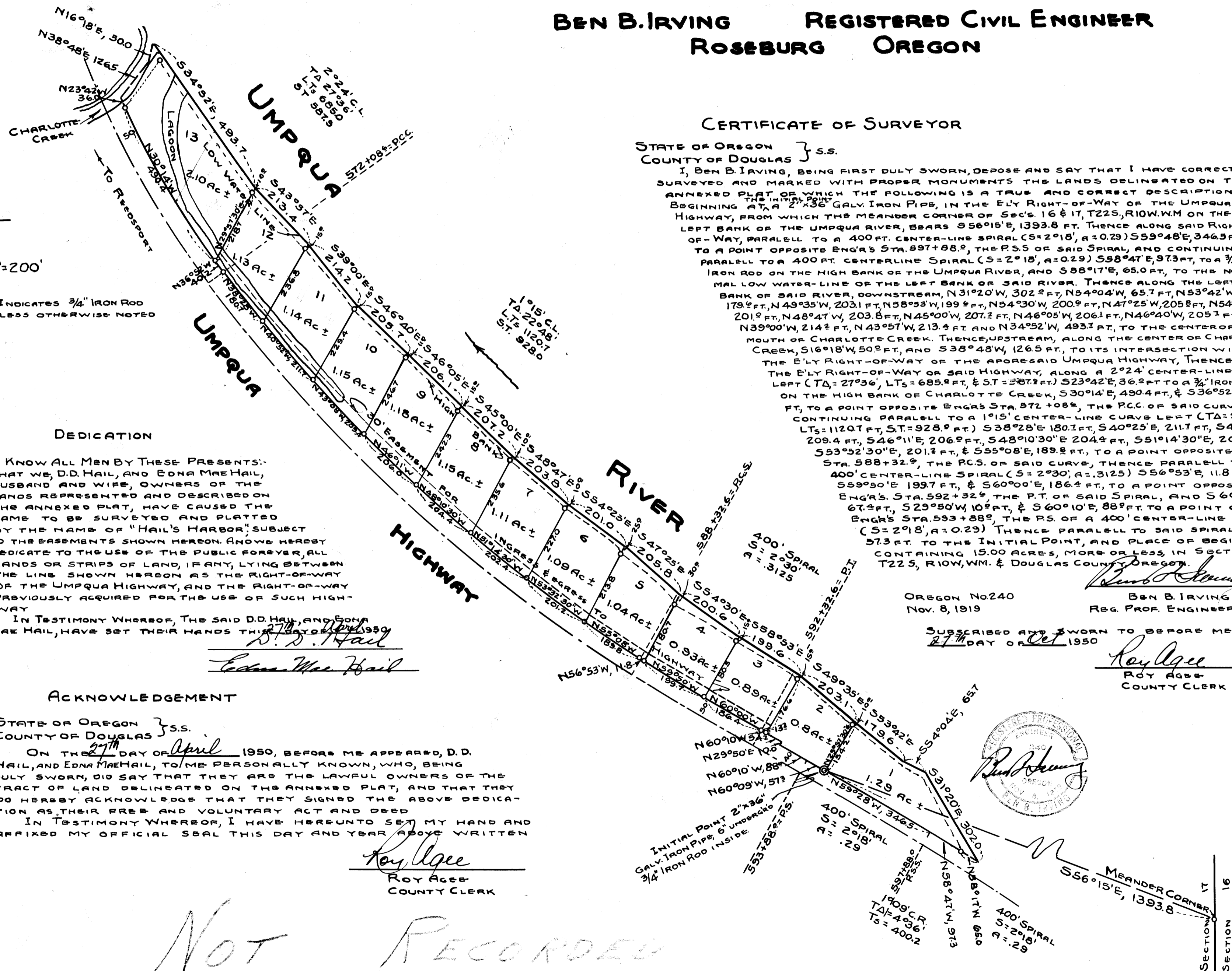
STATE OF OREGON
COUNTY OF DOUGLAS
I, Roy Agee, County Clerk of Douglas County, do hereby certify that the within copy of plat has been by me compared with the original thereof and that it is an exact copy thereof, as the same appears on file in my office and custody.
WITNESS MY HAND AND OFFICIAL SEAL THIS _____ DAY OF _____ 1950.

COUNTY CLERK



SCALE 1"=200'

0 INDICATES 3/4" IRON ROD UNLESS OTHERWISE NOTED



CERTIFICATE OF SURVEYOR

STATE OF OREGON } S.S.
COUNTY OF DOUGLAS }
I, BEN B. IRVING, BEING FIRST DULY SWORN, DEPOSE AND SAY THAT I HAVE CORRECTLY SURVEYED AND MARKED WITH PROPER MONUMENTS THE LANDS DELINEATED ON THE ANNEXED PLAT OF WHICH THE FOLLOWING IS A TRUE AND CORRECT DESCRIPTION, BEGINNING AT A 2" X 3/8" GALV. IRON PIPE, IN THE ELY RIGHT-OF-WAY OF THE UMPQUA HIGHWAY, FROM WHICH THE MEANDER CORNER OF SEC'S 16 & 17, T22S, R10W, WM ON THE LEFT BANK OF THE UMPQUA RIVER, BEARS S56°15'E, 1393.8 FT. THENCE ALONG SAID RIGHT-OF-WAY, PARALLEL TO A 400 FT. CENTER-LINE SPIRAL (S=2°18', A=0.29) S59°48'E, 346.3 FT. TO A POINT OPPOSITE ENGR'S STA. 597+88.2, THE P.C.S. OF SAID SPIRAL, AND CONTINUING PARALLEL TO A 400 FT. CENTER-LINE SPIRAL (S=2°18', A=0.29) S38°47'E, 97.3 FT. TO A 3/4" IRON ROD ON THE HIGH BANK OF THE UMPQUA RIVER, AND S88°17'E, 65.0 FT. TO THE NORMAL LOW WATER-LINE OF THE LEFT BANK OF SAID RIVER. THENCE ALONG THE LEFT BANK OF SAID RIVER, DOWNSTREAM, N31°20'W, 302.2 FT., N54°04'W, 65.7 FT., N53°42'W, 179.2 FT., N49°35'W, 203.1 FT., N58°53'W, 199.2 FT., N54°30'W, 200.9 FT., N47°25'W, 205.8 FT., N54°23'W, 201.2 FT., N48°47'W, 203.8 FT., N45°00'W, 207.2 FT., N46°05'W, 206.1 FT., N46°40'W, 205.7 FT., N39°00'W, 214.2 FT., N43°57'W, 213.4 FT. AND N34°52'W, 493.1 FT., TO THE CENTER OF THE MOUTH OF CHARLOTTE CREEK. THENCE UPSTREAM, ALONG THE CENTER OF CHARLOTTE CREEK, S16°18'W, 50.2 FT., AND S38°48'W, 126.5 FT., TO ITS INTERSECTION WITH THE ELY RIGHT-OF-WAY OF THE AFORESAID UMPQUA HIGHWAY, THENCE ALONG THE ELY RIGHT-OF-WAY OF SAID HIGHWAY, ALONG A 2°24' CENTER-LINE CURVE LEFT (TA=27°36', LTs=685.2 FT., & ST=587.2 FT.) S23°42'E, 36.2 FT. TO A 3/4" IRON ROD ON THE HIGH BANK OF CHARLOTTE CREEK, S30°14'E, 490.4 FT., & S36°52'E, 40.2 FT., TO A POINT OPPOSITE ENGR'S STA. 572+08.2, THE P.C.C. OF SAID CURVE, AND CONTINUING PARALLEL TO A 1°15' CENTER-LINE CURVE LEFT (TA=22°48', LTs=1120.7 FT., ST=928.9 FT.) S38°28'E, 180.1 FT., S40°25'E, 211.7 FT., S43°08'E, 209.4 FT., S46°11'E, 206.9 FT., S48°10'30"E, 204.4 FT., S51°14'30"E, 202.4 FT., S53°52'30"E, 201.2 FT., & S55°08'E, 189.2 FT., TO A POINT OPPOSITE ENGR'S STA. 588+32.2, THE P.C.S. OF SAID CURVE, THENCE PARALLEL TO A 400' CENTER-LINE SPIRAL (S=2°30', A=.3125) S56°53'E, 11.8 FT., S59°50'E, 199.7 FT., & S60°00'E, 186.2 FT., TO A POINT OPPOSITE ENGR'S STA. 592+32.2, THE P.T. OF SAID SPIRAL, AND S60°10'E, 67.2 FT., S29°50'W, 10.9 FT., & S60°10'E, 88.2 FT. TO A POINT OPPOSITE ENGR'S STA. 593+88.2, THE P.S. OF A 400' CENTER-LINE SPIRAL (S=2°18', A=0.29) THENCE PARALLEL TO SAID SPIRAL, S60°09'E, 57.3 FT. TO THE INITIAL POINT, AND PLACE OF BEGINNING, CONTAINING 15.00 ACRES, MORE OR LESS, IN SECTION 17, T22 S., R10 W., WM. & DOUGLAS COUNTY, OREGON.

OREGON No240
Nov. 8, 1919
BEN B. IRVING
REG. PROF. ENGINEER

SUBSCRIBED AND SWORN TO BEFORE ME, THIS
27th DAY OF Oct 1950

Roy Agee
COUNTY CLERK



DEDICATION

KNOW ALL MEN BY THESE PRESENTS: THAT WE, D.D. HAIL, AND EDNA MAEHAIL, HUSBAND AND WIFE, OWNERS OF THE LANDS REPRESENTED AND DESCRIBED ON THE ANNEXED PLAT, HAVE CAUSED THE SAME TO BE SURVEYED AND PLATTED BY THE NAME OF "HAIL'S HARBOR", SUBJECT TO THE EASEMENTS SHOWN HEREON. AND WE HEREBY DEDICATE TO THE USE OF THE PUBLIC FOREVER, ALL LANDS OR STRIPS OF LAND, IF ANY, LYING BETWEEN THE LINE SHOWN HEREON AS THE RIGHT-OF-WAY OF THE UMPQUA HIGHWAY, AND THE RIGHT-OF-WAY PREVIOUSLY ACQUIRED FOR THE USE OF SUCH HIGHWAY

IN TESTIMONY WHEREOF, THE SAID D.D. HAIL, AND EDNA MAEHAIL, HAVE SET THEIR HANDS THIS 27th DAY OF Oct 1950
D.D. Hail
Edna Mae Hail

ACKNOWLEDGEMENT

STATE OF OREGON } S.S.
COUNTY OF DOUGLAS }
ON THE 27th DAY OF April 1950, BEFORE ME APPEARED, D.D. HAIL, AND EDNA MAEHAIL, TO ME PERSONALLY KNOWN, WHO, BEING DULY SWORN, DID SAY THAT THEY ARE THE LAWFUL OWNERS OF THE TRACT OF LAND DELINEATED ON THE ANNEXED PLAT, AND THAT THEY DO HEREBY ACKNOWLEDGE THAT THEY SIGNED THE ABOVE DEDICATION AS THEIR FREE AND VOLUNTARY ACT AND DEED
IN TESTIMONY WHEREOF, I HAVE HEREBY SET MY HAND AND AFFIXED MY OFFICIAL SEAL THIS DAY AND YEAR ABOVE WRITTEN

Roy Agee
COUNTY CLERK

NOT RECORDED

STATE OF OREGON } S.S.
COUNTY OF DOUGLAS }
I, BEN B. IRVING, BEING DULY SWORN, DEPOSE AND SAY UPON OATH: THAT I AM THE ENGINEER WHO MADE THE SURVEY AND PREPARED THE FINAL MAP OF "HAIL'S HARBOR", AND THAT THE FOREGOING TRACING IS AN EXACT COPY OF THE MAP OF SAID "HAIL'S HARBOR".
SUBSCRIBED AND SWORN TO BEFORE ME, THIS 27th DAY OF Oct 1950
Ben B. Irving
REG. PROF. ENGINEER

APPROVALS

- Approved _____ 1950
D.N. BUSENBARK
COUNTY JUDGE
- Approved _____ 1950
NED DIXON
COUNTY ASSESSOR
- Approved _____ 1950
BEN B. IRVING
COUNTY SURVEYOR
- FILED _____ 1950
COUNTY CLERK