

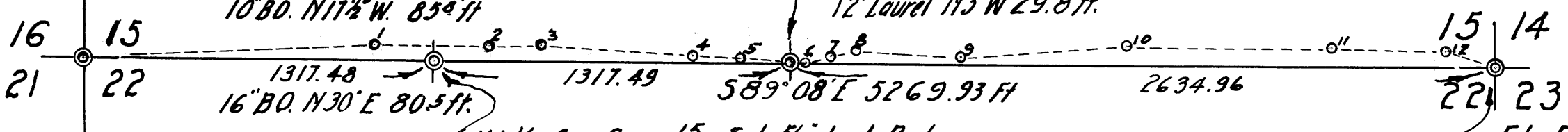
1/4 Cor. Secs. 16-15  
 OBT 30° BO N0°15'E 714 lks  
 OBT (stump) N1° W. 717 lks  
 10" W.O. N47 1/2° E 462.6 ft.  
 10" BO N22 1/4° W 372.4 ft.

OFFSETS FROM TRAVERSE HUBS TO TRUE LINE.

Hub	Offset	South	ft
1			54.0
2			58.8
3			55.4
4			25.8
5			20.5
6			6.2
7			31.6
8			43.5
9			38.6
10			81.6
11			75.4
12			73.1

Corner Secs. 15-16-21-22  
 Stump OBT 20° W.O. 539° E 33 lks.  
 Stump OBT 30° W.O. N77° E 109 lks.  
 Stump OBT 20° W.O. S27° W 332 lks.  
 SET 1" x 3/16" Iron Pipe with brass cap  
 New B.Ts: 14" B.O. 539° 15' W 50° ft.  
 10" B.O. N17 1/2° W. 85° ft.

1/4 Cor. Secs. 15/22 at midpoint.  
 Set 1" x 3/16" Iron Pipe with brass cap.  
 10" Fir S47° W 20.9 ft.  
 12" Laurel N3° W 29.8 ft.

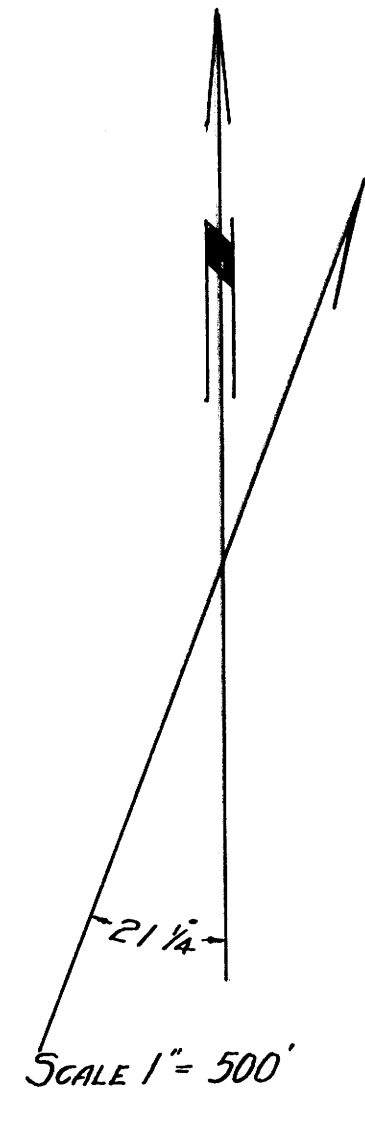


W 1/4 Cor. Secs. 15/22 Set 3/8" Iron Rod  
 20" B.O. S1° E 64.5 ft.  
 14" W.O. N60 1/2° E 195.8 ft.

Fd. Bolt & stump OBT  
 12" B.O. S30° W. 81 lks. Set  
 1" x 3/16" Iron Pipe with brass cap.  
 10" Fir N85° E 31.0 ft.  
 10" Fir S24° E. 33.3 ft.  
 10" Fir S12° 30' W 46.6 ft.  
 8" Fir N42° W 25.0 ft.

NOTE: Base Bearings, between Sec. Cor 15-16-21-22 and Hub 1 N88° 00' E from  
 compass needle, Var. 21 1/4° E. All angles turned in deflection and doubled. Distances  
 measured with a 300 ft steel tape. West line of sections 15-22 and 27 were not  
 surveyed but the corners indicated were renewed from original bearing trees  
 or their stumps which were positively identified.

1/4 Cor. Secs. 21-22  
 Not found



21-22  
 28-27  
 Sec. Cor. Secs. 21/22  
 Fd. OBT. 10" W.O. 584° W 126 lks  
 Set 1" Iron Pipe with brass cap.  
 18" Fir N37 1/2° W 45.7 ft.  
 14" Fir S27 1/2° E 27.4 ft.  
 10" Fir N24 1/2° 59.0 ft.

1/4 Cor. Secs. 28-27  
 Fd OBT 20° BO 532° E 631 lks.  
 Set 1" Iron Pipe with brass cap.  
 10" Fir 554° E 620 ft.  
 10" Fir S17° W 20.6 ft.

COUNTY SURVEYOR'S OFFICE  
 SURVEY OF THE NORTH BOUNDARY  
 SECTION 22, T 27 S., R 7 W., WM.  
 for

GEORGE BARTER  
 BEN. B. IRVING COUNTY SURVEYOR

MARCH-APRIL 1954

COUNTY SURVEYORS FILE  
 DO NOT REMOVE FROM FILE