

Survey for

OREGON STATE BOARD OF FORESTRY

SEC. LINE 3 & 10 T. 22 S. R. 11 W. W.M.

DOUGLAS CO., OREGON

TRANSIT & CHAIN SURVEY BY: A. GIBSON - E. DRIVER - R. WITHAM - D. TIMMONS

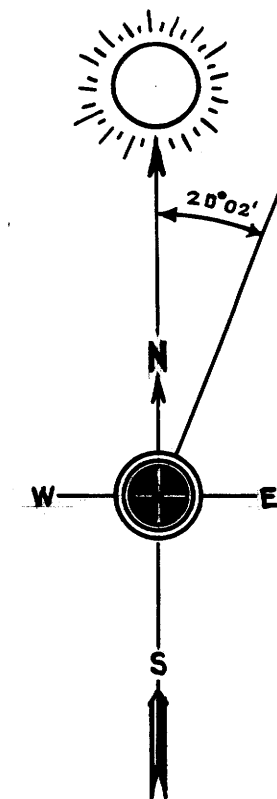
DRAWN BY: A. GIBSON FEB. 1958

SCALE 1" = 400.0'

COUNTY SURVEYORS FILE
DO NOT REMOVE FROM OFFICE

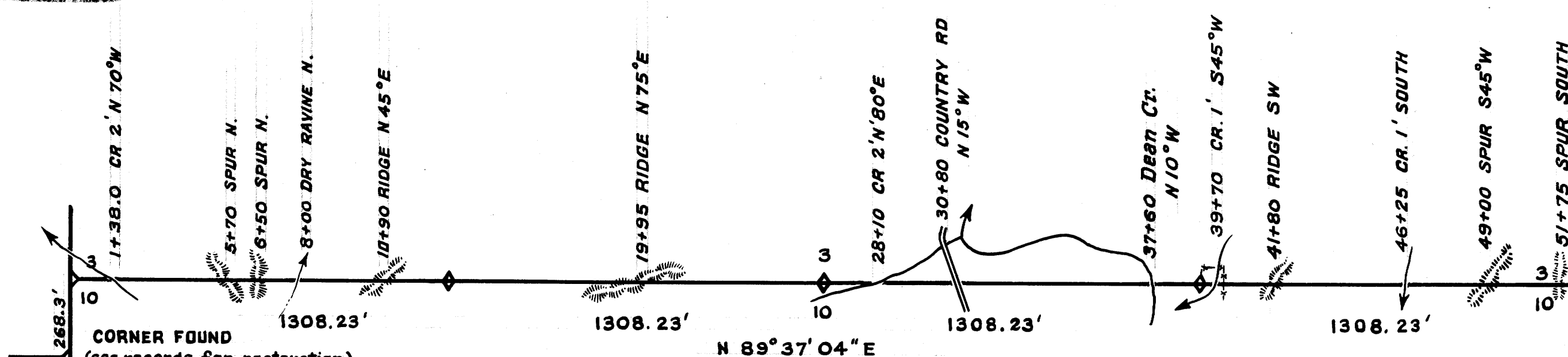
Solar Observation

| | |
|-----------------------|--|
| MAGNETIC VARIATION | 20° 02' |
| DATE | JAN. 21, 1958 |
| STANDARD TIME | 10:09:00 A.M. |
| LOCAL TIME | 9:53:02 A.M. |
| SUN'S DECLINATION | S 19° 53' 22" |
| REFRACTION CORRECTION | - 2' 41" |
| LATITUDE | N 43° 40' 43" |
| SUN'S ALTITUDE | 18° 51' 39" |
| PLACE OF OBSERVATION | S 87° 45' 50" W 848.3' FROM SECTION CORNER 3 & 10 (EAST SIDE) |



REGISTERED
OREGON
LAND SURVEYOR

Arnold G. Gibson
NOV. 4, 1955
ARNOLD G. GIBSON
359



CORNER FOUND
(see records for restoration)

CLOSING CORNER FOUND
(see records for restoration)

W 1/6 ESTABLISHED
1 1/2" x 36" G.I.P. 3" Bronze cap
in stone mound.
30" Fir S 61 1/2° W 12.1'
19" Fir S 12° W 29.3'

1/4 CORNER REESTABLISHED
1 1/2" x 36" G.I.P. 3" Bronze Cap
in stone mound.
24" Fir S 52° W 144.9'
21" Maple S 41 1/2° W 101.0'

E 1/6 ESTABLISHED
1 1/2" x 36" G.I.P. 3" Bronze Cap
in stone mound.
58" Maple N 61 1/2° E 106.7'
6.5' DIA. 4' HIGH ROCK
OUTCROP S 17 3/4° W 28.2' (XBO)

SECTION CORNER FOUND
(see records for restoration)

FOR DETAILED REPORTS OF INDIVIDUAL CORNERS SEE
"BEARING TREES OF UNITED STATES SURVEYS"

C.S. 42/340 - MAP FILE M. 9. - 34

M 9-34