

SURVEY TO ESTABLISH PROPERTY CORNERS

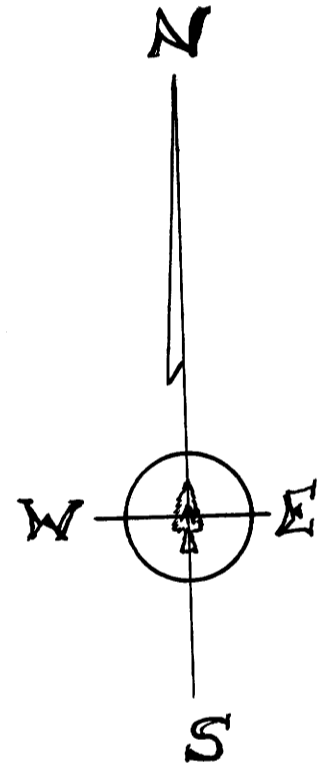
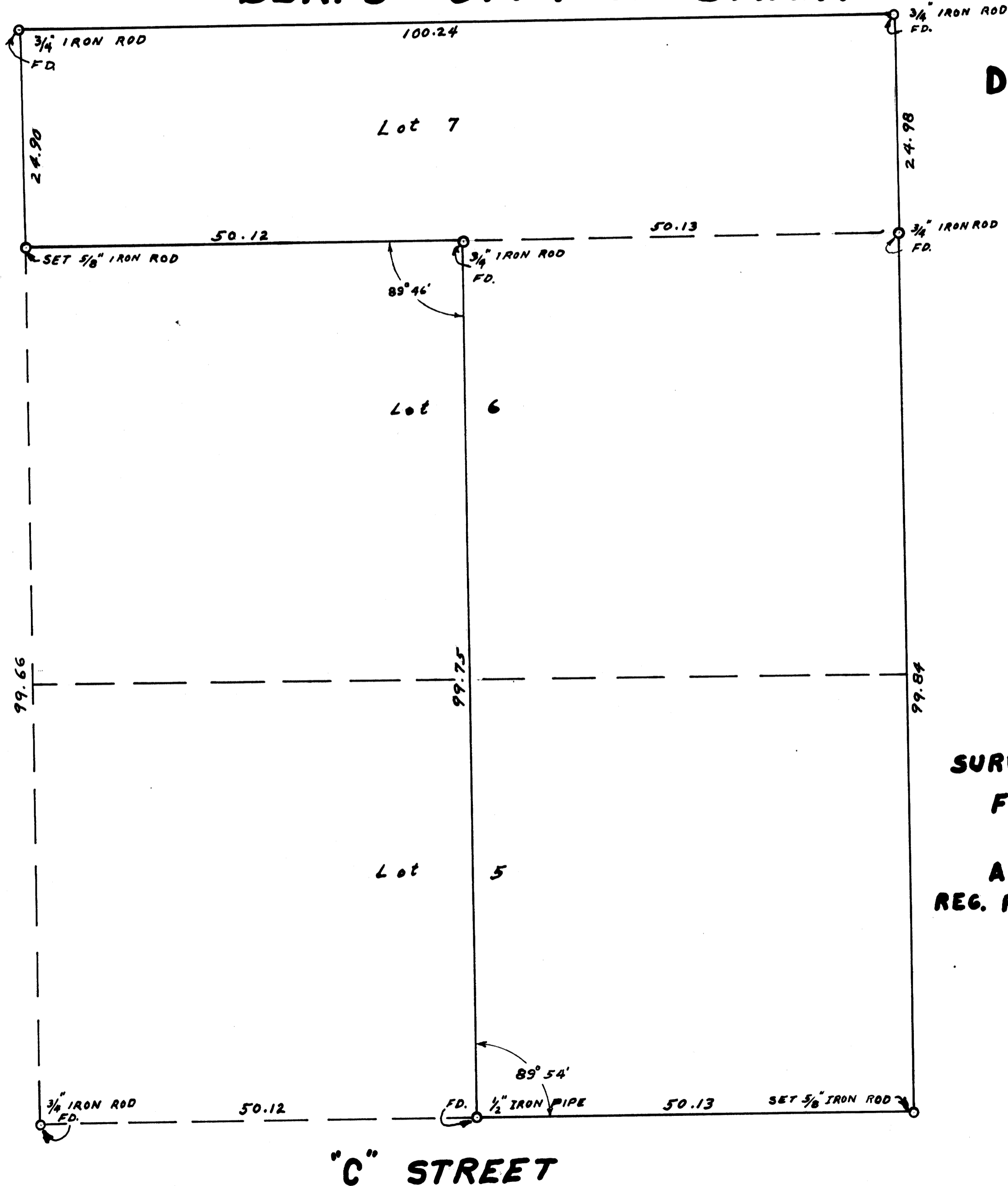
E. 1/2 LOTS 5, 6, & S. 1/2 LOT 7

BLK. 9 CITY OF DRAIN

COUNTY SURVEYORS FILE THIS
DO NOT REMOVE FROM FILE

DOUGLAS CO. OREGON

THIRD STREET



SCALE: 1" = 10 FT.

SURVEYED & PLATTED
FEBRUARY, 1958
BY
A. R. TUCKEY
REG. PROF. LAND SURVEYOR

REGISTERED
OREGON
LAND SURVEYOR

A. R. Tuckey

MAY 4, 1958
A. R. TUCKEY
380

FILED
RECEIVED

FEB 27 1958

COUNTY SURVEYOR
DOUGLAS COUNTY, ORE.

SURVEY FOR STEVE FERCHE
DRAIN POST OFFICE LOCATION P MAP FILE M 9-33