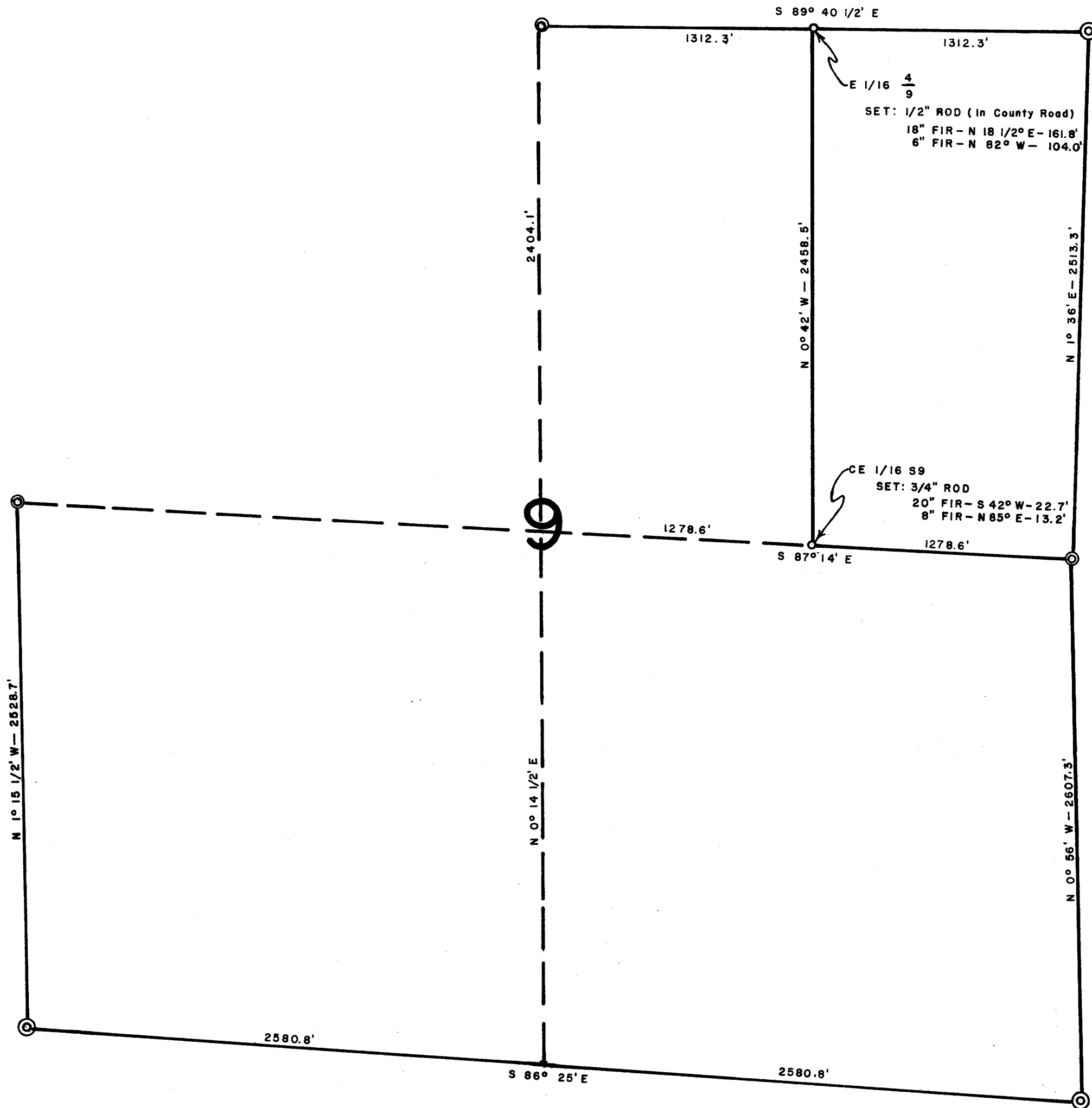
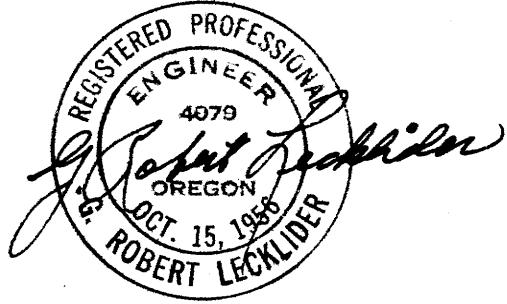


COUNTY SURVEYORS FILE DATA  
DO NOT REMOVE FROM OFFICE

# SURVEY OF E 1/2 NE 1/4 SEC. 9, T 28 S, R 7 W, W.M. SURVEYED FOR: CHARLES GREEN SURVEYED BY: G.R. LECKLIDER-ENGR. JUNE, 1957 SCALE: 1" = 500'

⊙ DENOTES CORNERS FOUND AS DESCRIBED IN THE COUNTY SURVEYOR'S OFFICE  
◦ DENOTES CORNERS SET



FILED  
RECEIVED

FEB 27 1958

COUNTY SURVEYOR  
DOUGLAS COUNTY, ORE.