

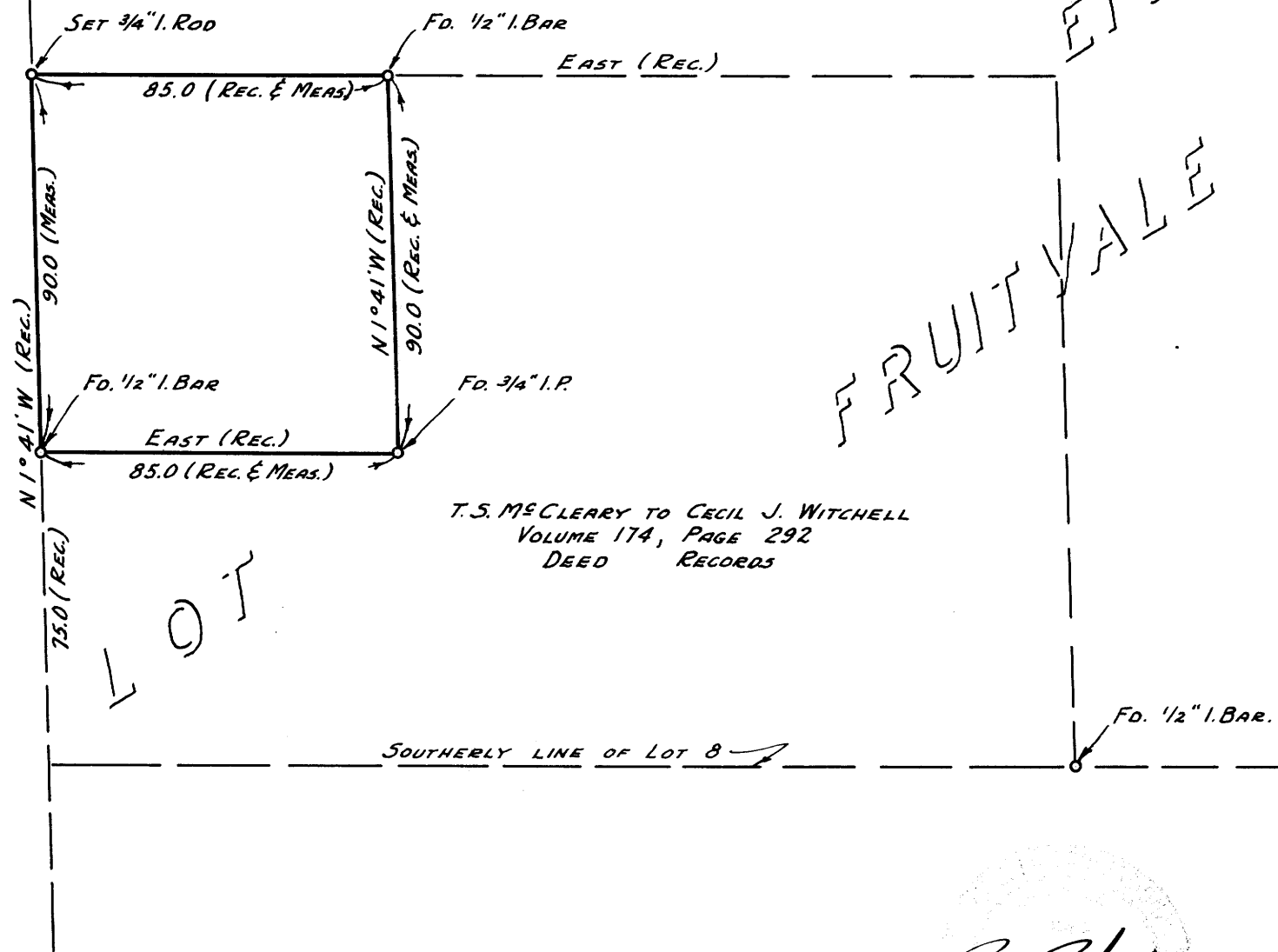
T.S. McCLEARY TO DOUGLAS SERVICE GARAGE INC.
VOLUME 124, PAGE 153
DEED RECORDS

T.S. McCLEARY TO CECIL J. WITCHELL
VOLUME 174, PAGE 292
DEED RECORDS

HIGHWAY

(U.S. 99)

PACIFIC



FRUITVALE EIGHT

COUNTY SURVEYORS FILE DATA
DO NOT REMOVE FROM OFFICE

COUNTY SURVEYOR'S OFFICE
DOUGLAS COUNTY, OREGON

SURVEY TO ESTABLISH PROPERTY
CORNER IN LOT 8, FRUITVALE.

BEN B. IRVING COUNTY SURVEYOR
SURVEYED MAY 19, 1953 SCALE 1" = 40'
SURVEYED FOR T.S. McCLEARY

Ben B. Irving

C.S. FILE 45/156

C.S. FILE 45/156

MAP FILE M9.F.3

M 9-3