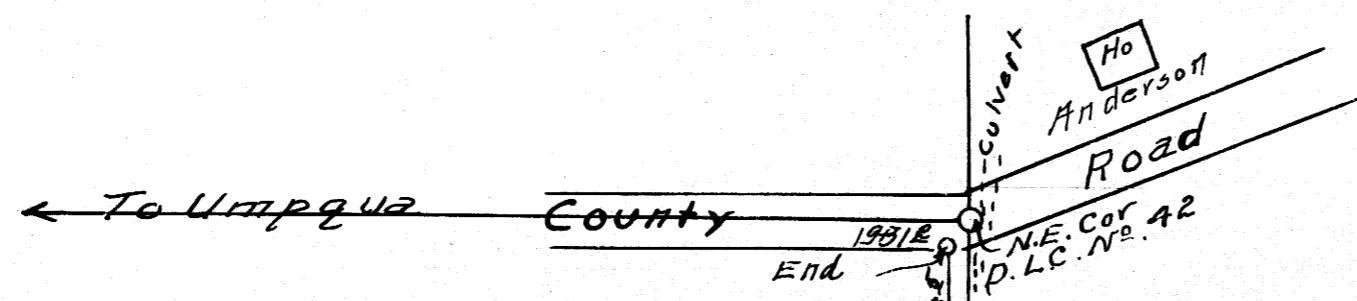
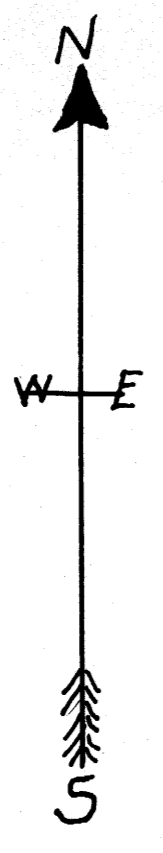


COUNTY SURVEYORS FILE D:
DO NOT REMOVE FROM OFFICE



Gail & Vere Winniford Gateway Road

in
Sec. 29., T. 25 S., R. 6 W. W.M.
Surveyed by H. L. Eppstein Co. Sur.
May 15th, 1935. Scale 1" = 200'.



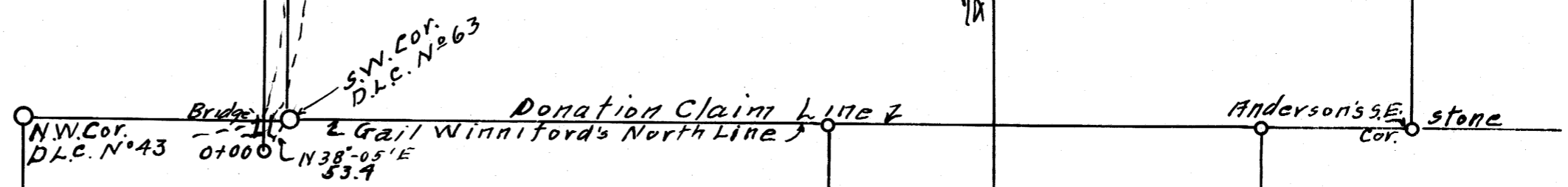
16+27' 0"
N 10° 56' W 128.5'
11+23' 0"
N 1° 18' E 488.3'
10+77' 0"
N 1° 18' E 488.3'
Ditch
West Line D.L.C. No. 63

APPROX. Bridge for Ditch
N 12° 58' E
46'

R.M. & Nellie Anderson

R. M. & Nellie D. Anderson.

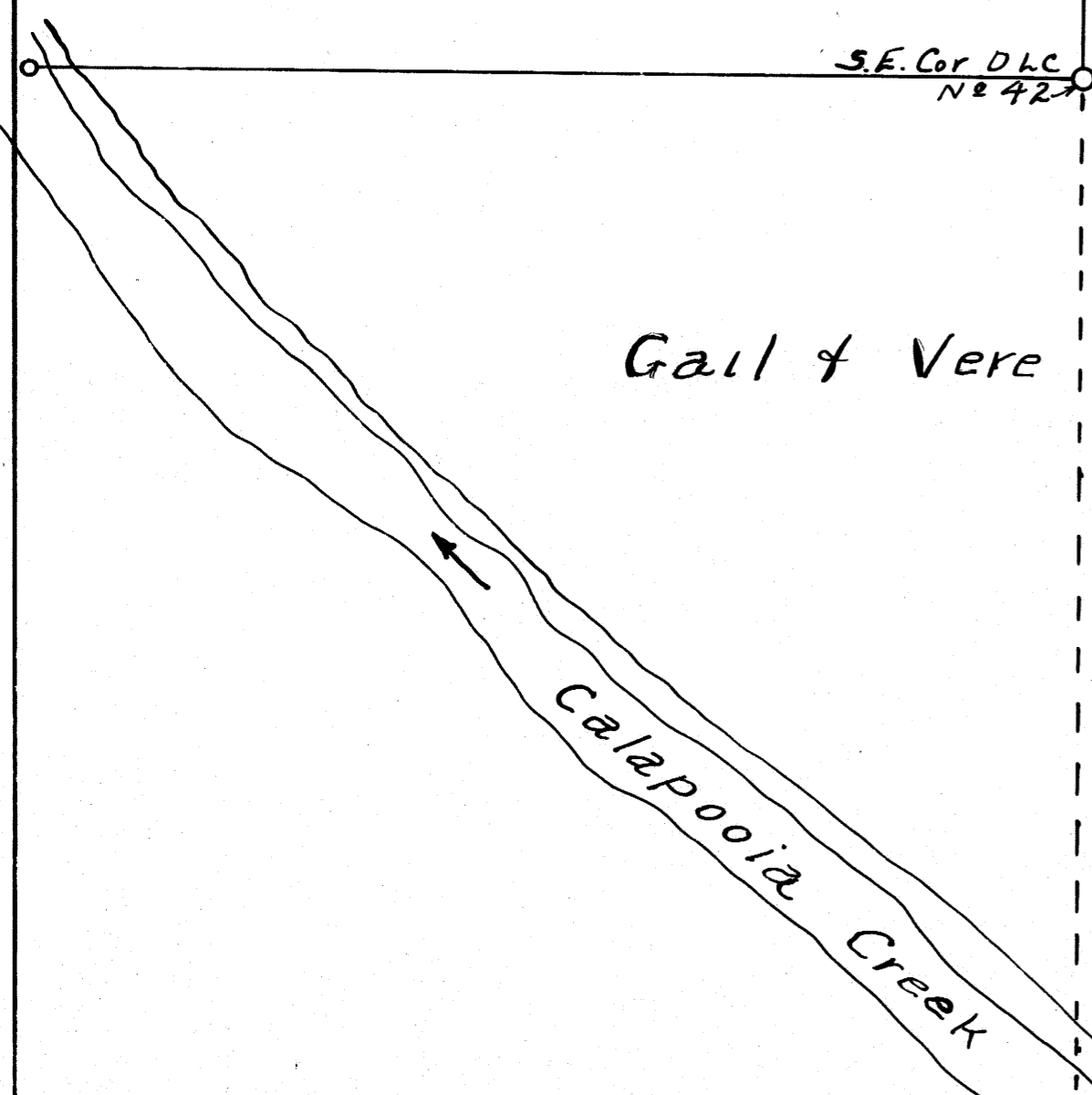
Sec 29
Sec 28



John A Winniford

Gail & Vere Winniford.

Approx Location
Ho Winniford



John A. Winniford.

Gail Winniford East Line

29 28
32 33