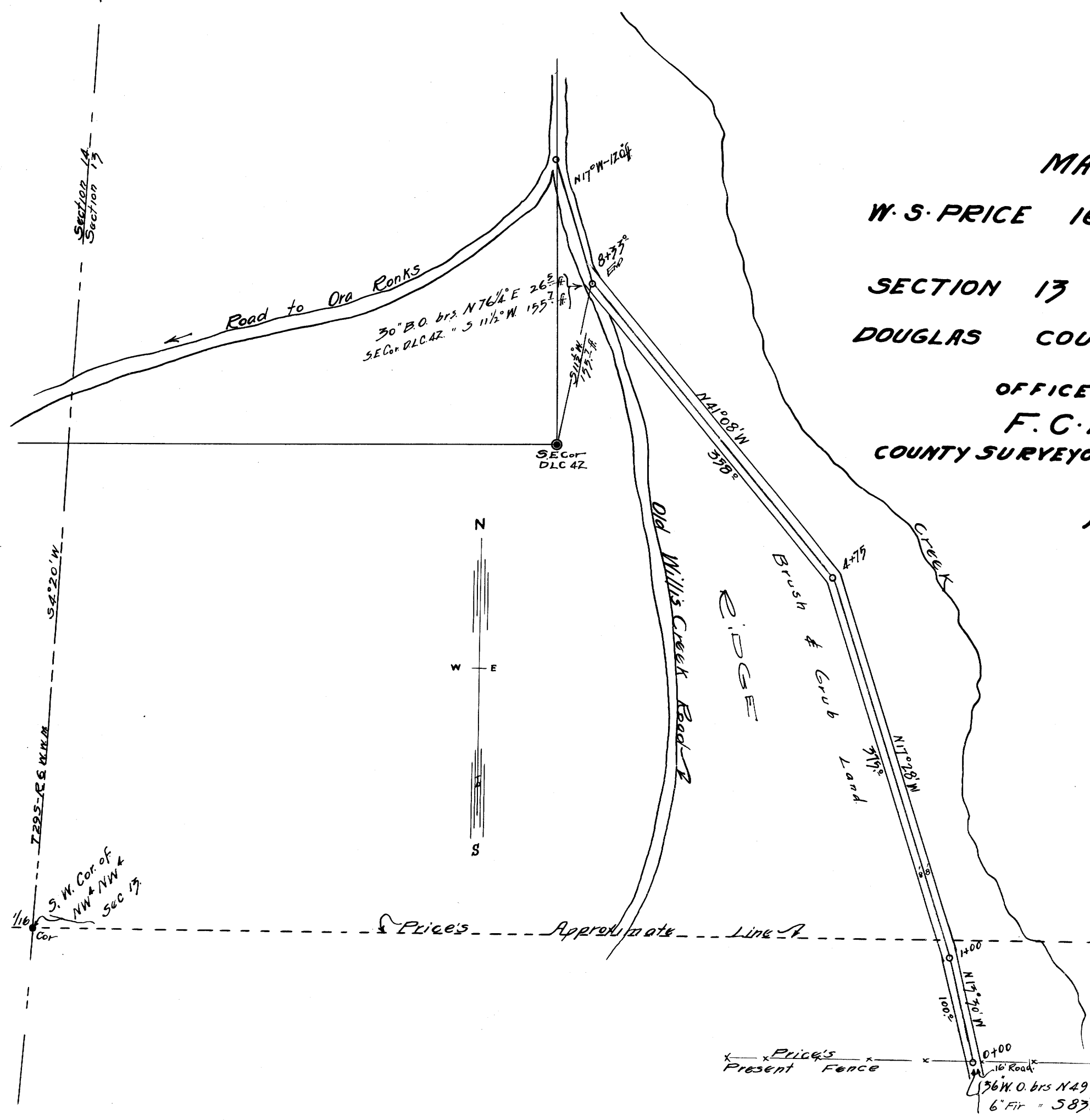


COUNTY SURVEYOR'S OFFICE
DO NOT REMOVE FROM FILE

MAP OF
W.S. PRICE 16 $\frac{1}{2}$ GATEWAY ROAD
in
SECTION 13 TWP 29S R6W W.M.
DOUGLAS COUNTY OREGON

OFFICE OF
F.C. FREAR
COUNTY SURVEYOR & ROADMASTER

NOV. 1921



Price Res.
[Symbol]

T29-6