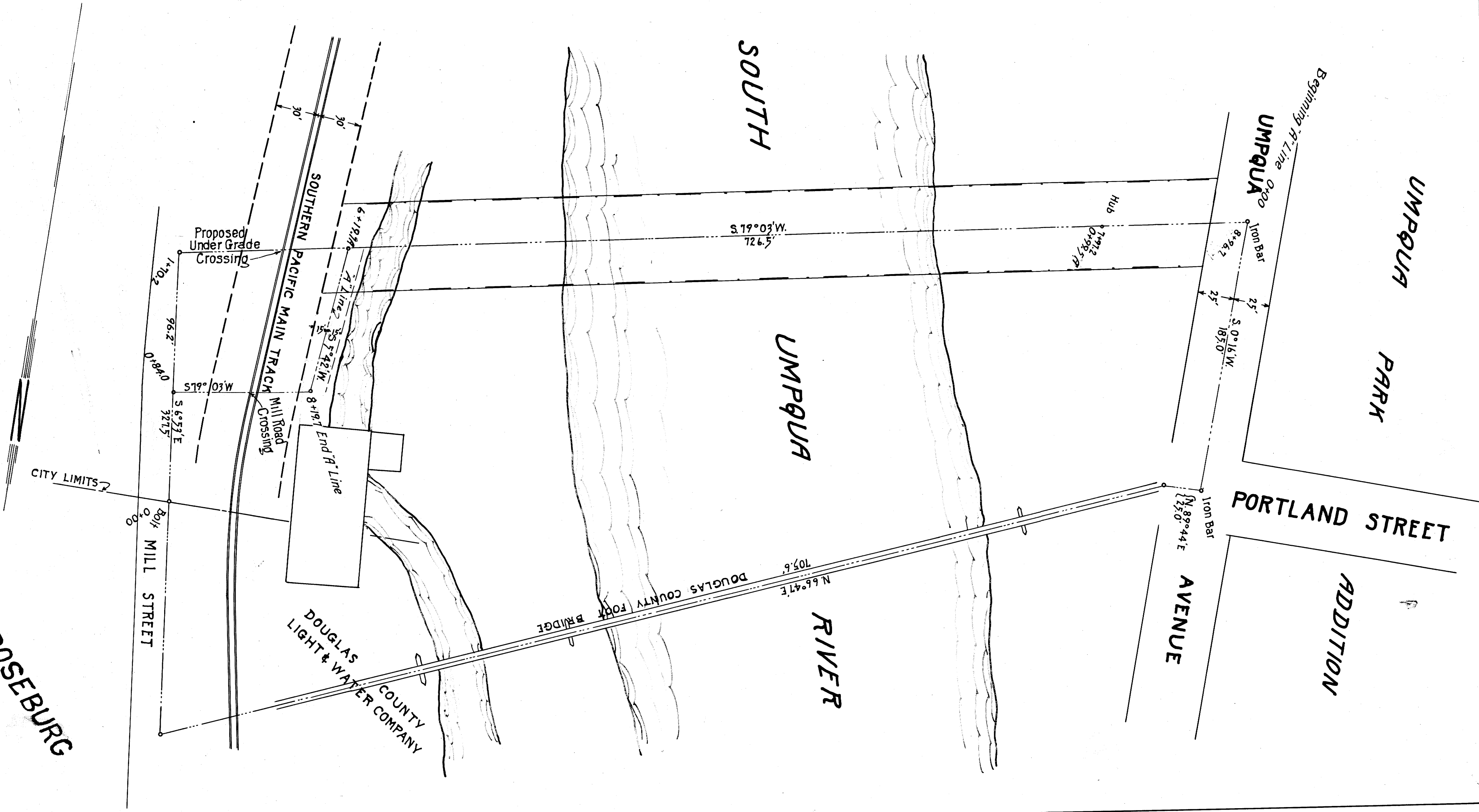


**STANLEY W. TAYLOR
ROAD OF PUBLIC EASEMENT
SECTION 25, TWP.27S., R. 6 W.M.M.
DOUGLAS COUNTY**

COUNTY SURVEYORS FILE IN
DO NOT REMOVE FROM OFFICE



CITY OF ROSEBURG

**DOUGLAS COUNTY
LIGHT & WATER COMPANY**