

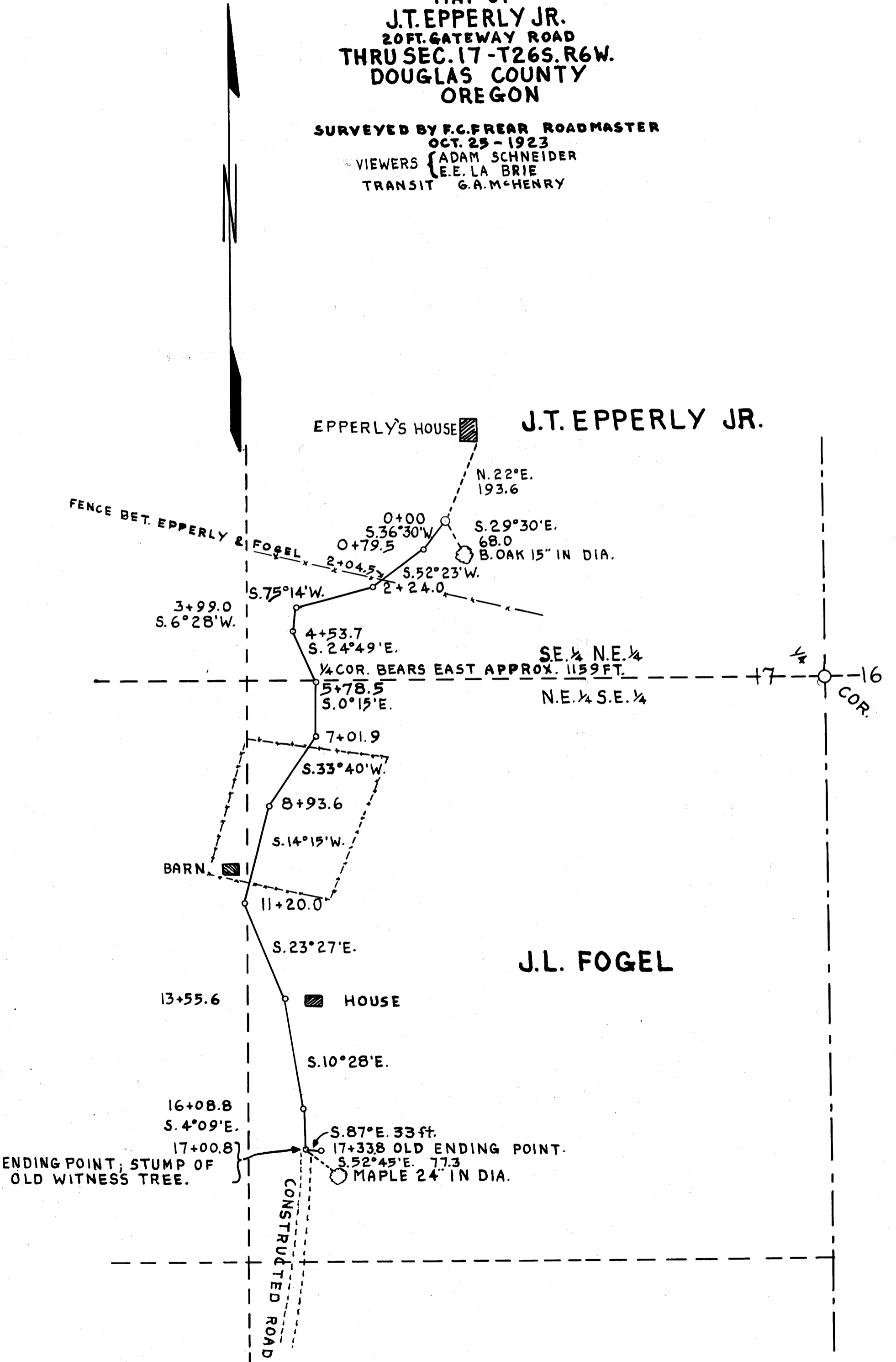
COUNTY SURVEYORS FILE DATA  
DO NOT REMOVE FROM OFFICE

MAP OF  
J.T. EPPERLY JR.  
20 FT. GATEWAY ROAD  
THRU SEC. 17 - T26S. R6W.  
DOUGLAS COUNTY  
OREGON

SURVEYED BY F.C. FREAR ROADMASTER

OCT. 25 - 1923

VIEWERS { ADAM SCHNEIDER  
E.E. LA BRIE  
TRANSIT G.A.M. HENRY



J.T. EPPERLY JR.

J.L. FOGEL

T26-6