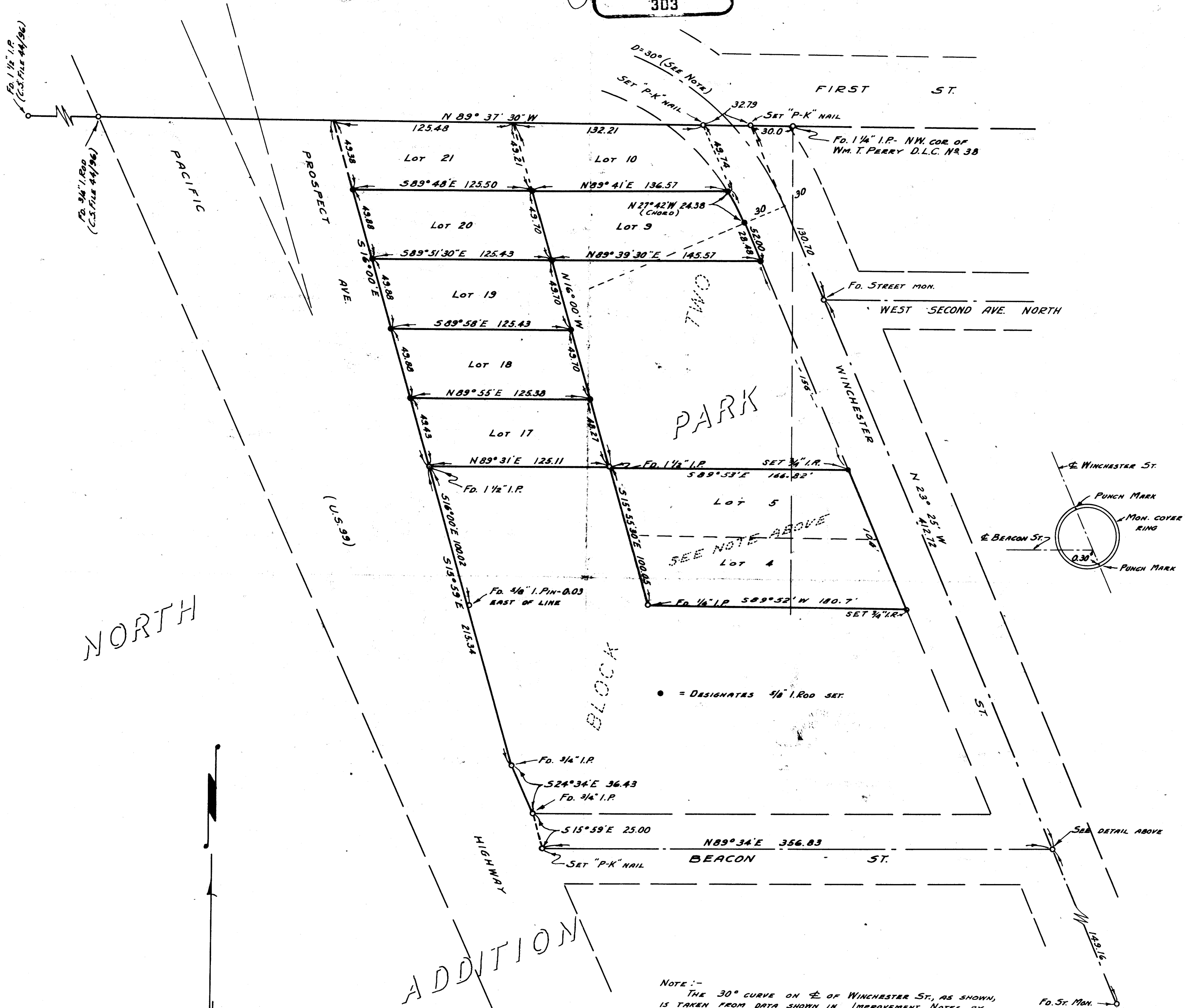


NOTE
LOTS 4 & 5, SURVEY TO SET
PROPERTY CORNERS AS SURVEYED
FOR JACK MYERS, NOV. 29, 1933
SEE C.S. FILE 43125.
FRED M. DARBY COUNTY SURVEYOR
BY JAMES W. BYRON DEPUTY

REGISTERED
OREGON
LAND SURVEYOR

JAMES W. BYRON
NOV. 8, 1893
JAMES W. BYRON
303



NORTH

ADDITION

BLOCK

PARK

SEE NOTE ABOVE

• = DESIGNATES 1/8" I. ROD SET

NOTE:-
FOUND CORNERS FOR LOTS 12, 14, 15, & 16, PLACED,
USING PLAT DISTANCES FROM BEACON ST, BY AN EMBLIME
SURVEY (NOT BY THIS OFFICE). AS THE TOTAL DISTANCE
BETWEEN BEACON ST AND THE WESTERLY EXTENSION IS
LESS THAN THAT SHOWN BY THE ORIGINAL PLAT OF
NORTH PARK ADDITION, THE PRORATED DISTANCES WERE
USED IN LAYING OUT LOTS 3, & 18 TO 20 INCL. NO CHANGES
WERE MADE IN THE MONUMENTS SET ON THE OLDER
SURVEY, WHICH SHOULD HAVE BEEN PRORATED.

NOTE:-
THE 30° CURVE ON E OF WINCHESTER ST, AS SHOWN,
IS TAKEN FROM DATA SHOWN IN IMPROVEMENT NOTES BY
FLESER, DATED MAY, 1914.
THE BEARING OF N 16° 00' W, FROM PLAT OF NORTH PARK
ADDITION, ON EAST LINE OF PROSPECT AVE. IS USED AS BASE
BEARING FOR THIS SURVEY.

COUNTY SURVEYOR'S OFFICE
DOUGLAS COUNTY, OREGON

SURVEY TO ESTABLISH LOT
CORNERS, NORTH PARK ADD,
ROSEBURG, OREGON

BEN B. IRVING COUNTY SURVEYOR
SURVEYED JAN., 1954 SCALE 1" = 50'
SURVEYED FOR A.J. TOWNSEND

COUNTY SURVEYORS FILE DATA
DO NOT REMOVE FROM OFFICE

