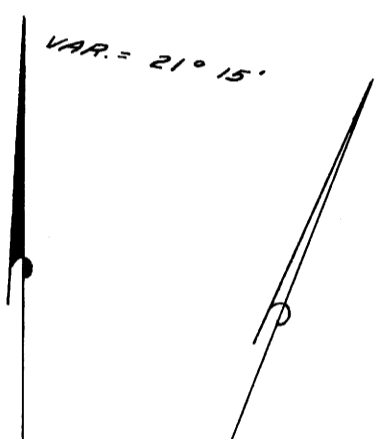
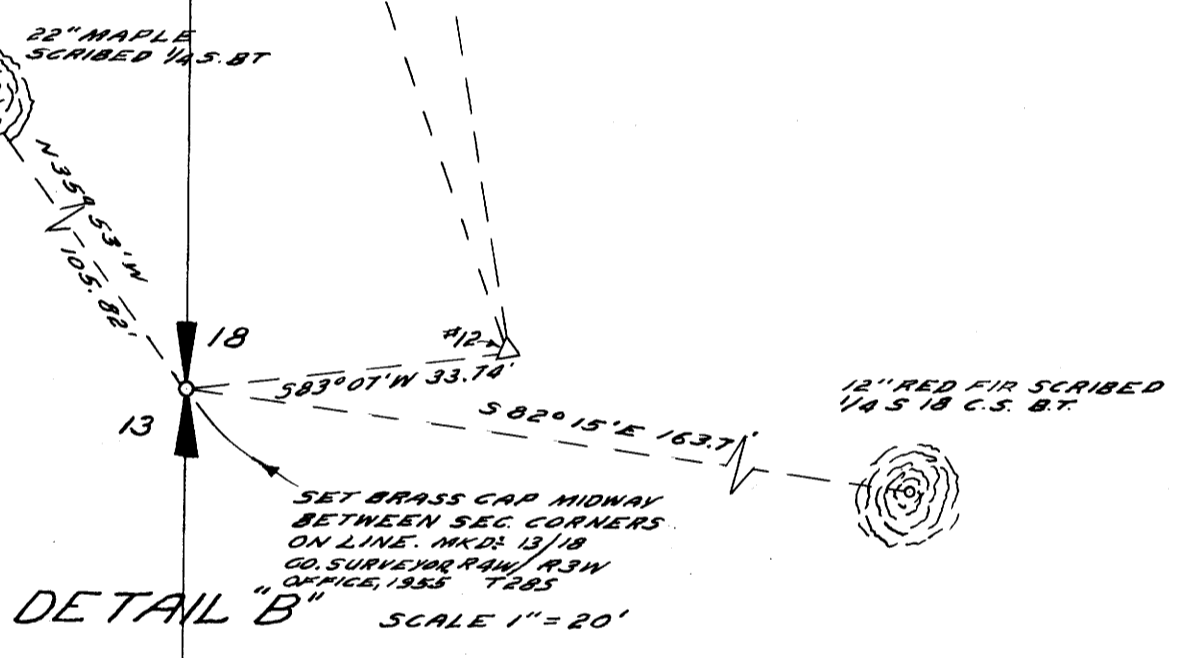
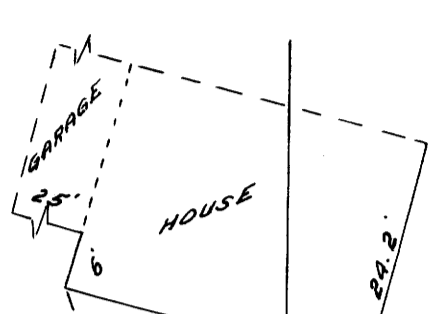
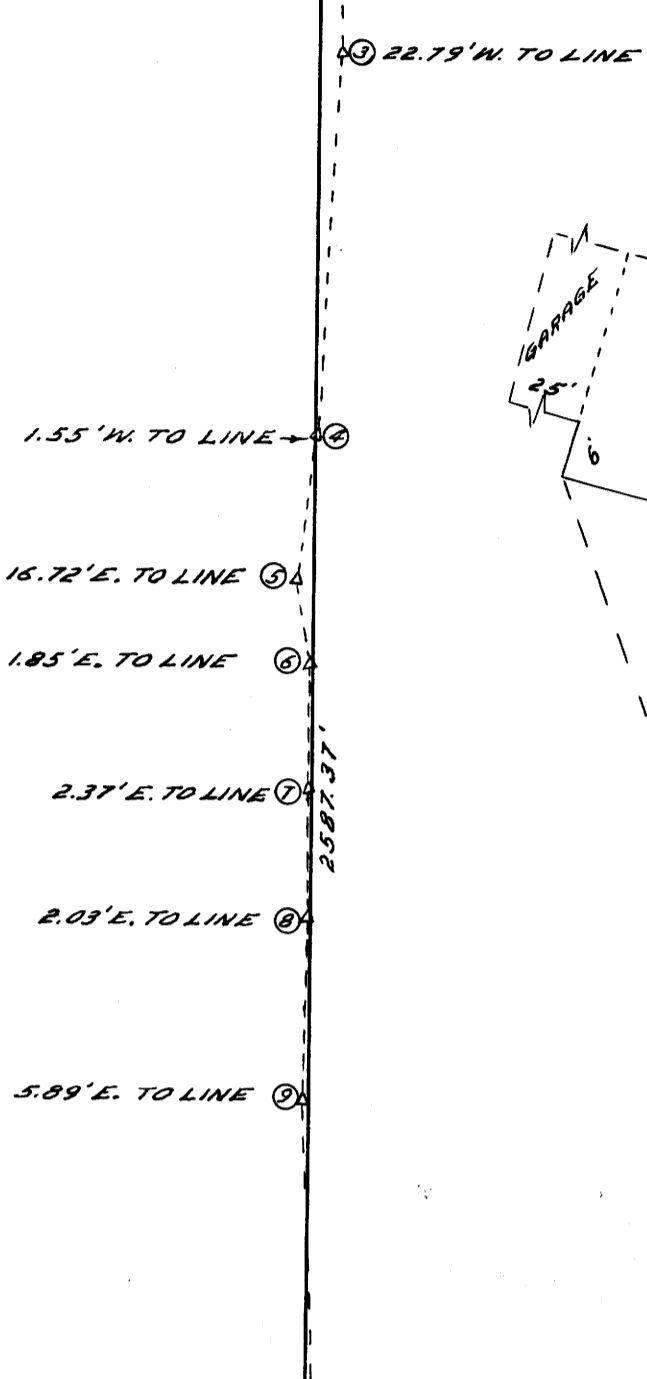
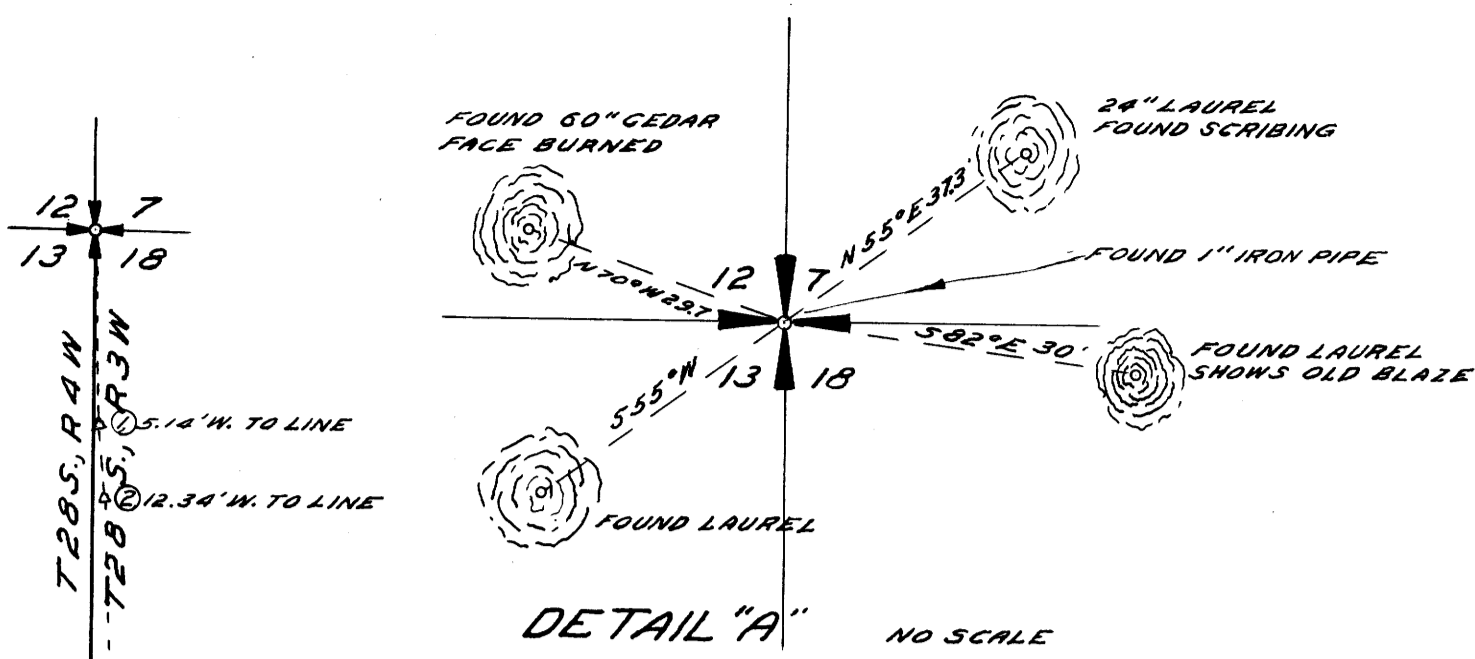


NOTE:
FOR INFORMATION ON
SECTION CORNER SEE
DETAIL "A"



NOTE FOR INFORMATION ON
COR. SEE DETAIL "B"

COUNTY SURVEYOR'S OFFICE
DOUGLAS COUNTY, OREGON

SURVEY OF THE WEST LINE
SECTION 18, T28S., R3 W., W.M.

REGISTERED
OREGON
LAND SURVEYOR
James W. Byron
NOV. 6, 1938
JAMES W. BYRON
303

BEN B. IRVING COUNTY SURVEYOR
SURVEYED SEPT 23, 1955 BY
JAMES W. BYRON - DEPUTY SCALE 1" = 200'
SURVEYED FOR B. D. RANDALL

NOTE:
BEARINGS SHOWN ARE
MAGNETIC.

NOTE
FOR INFORMATION ON SEC
COR. SEE DETAIL "C"

