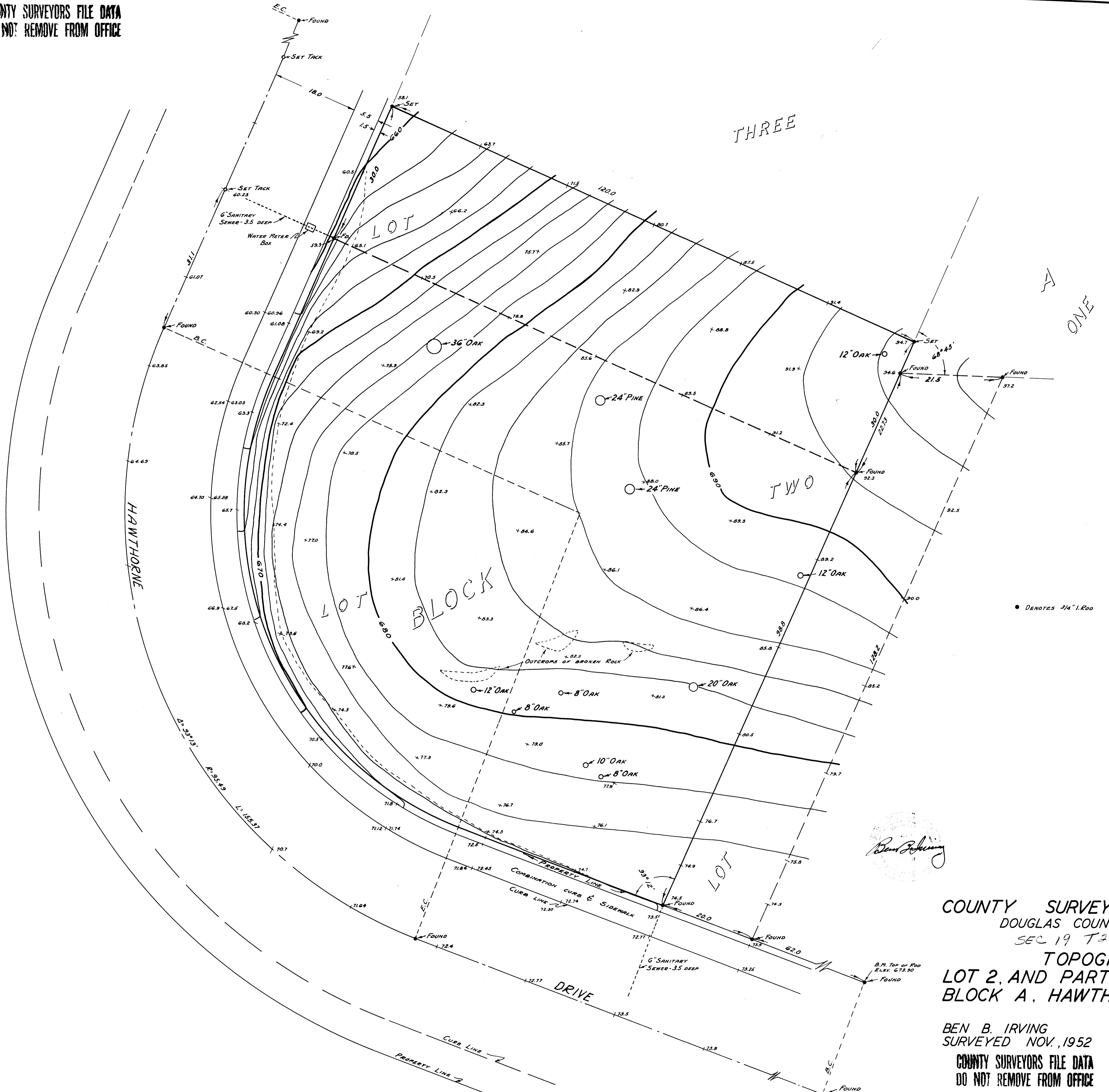


COUNTY SURVEYORS FILE DATA
DO NOT REMOVE FROM OFFICE



COUNTY SURVEYOR'S OFFICE
DOUGLAS COUNTY, OREGON
SEC 19 T27, R5
TOPOGRAPHY
LOT 2, AND PARTS OF LOTS 1, 3,
BLOCK A, HAWTHORNE TERRACE

BEN B. IRVING COUNTY SURVEYOR
SURVEYED NOV, 1952 SCALE 1"=10'
COUNTY SURVEYORS FILE DATA
DO NOT REMOVE FROM OFFICE

Ben B. Irving