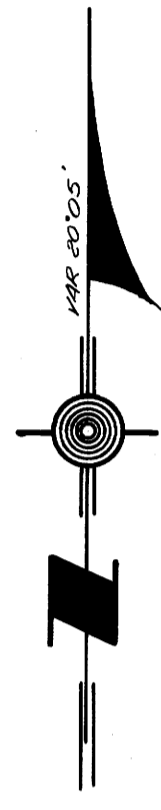


COUNTY SURVEYORS FILE DATA
DO NOT REMOVE FROM OFFICE

Fd 30" 71' - Now 36"
540' E, 30' 1/2"
Set 4" Cedar Post Mkd
NW D.L.C. 45 15 158



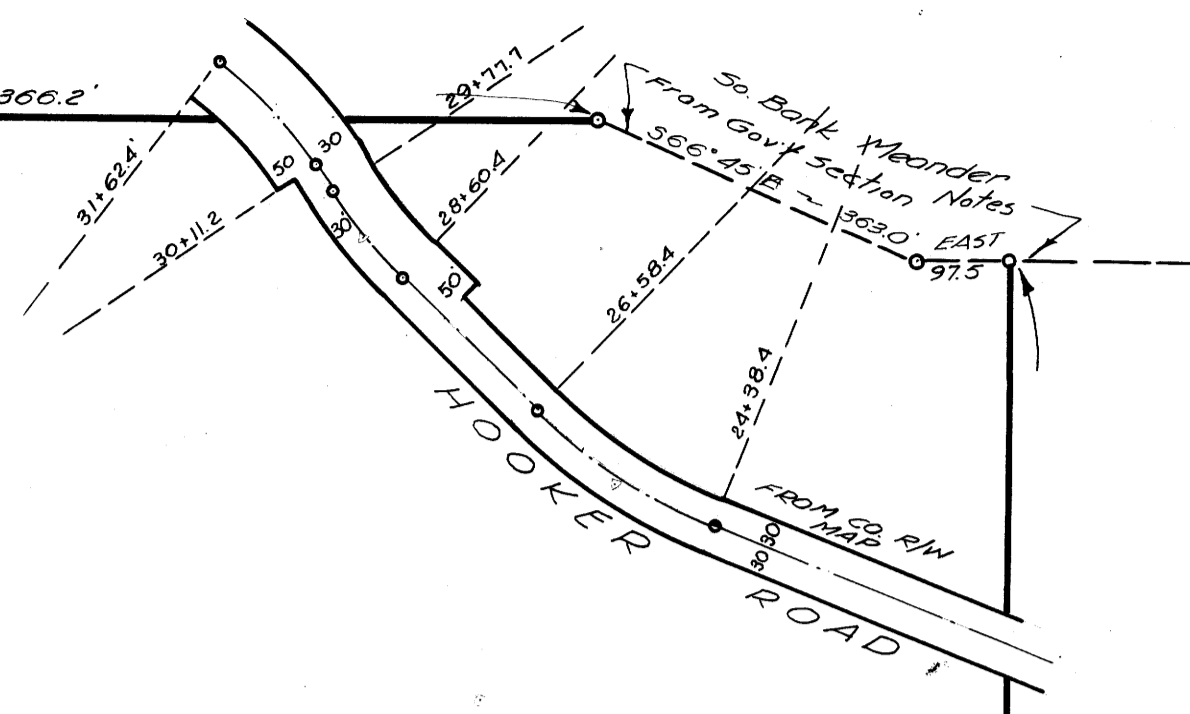
REGISTERED
OREGON
LAND SURVEYOR
Richard R. Ecker
NOVEMBER 9, 1945
RICHARD R. ECKER
158

NORTH ~ 8894.0'

WEST ~ 1366.2'

152.17 ac.

SOUTH ~ 3336.2'



Fd 4" Post
BT N50°E, 76' 1/2"

554.7' EAST ~ 1797.2'

N81°35'E
15.2'

399.9'

O.E. BEYS
Sawyer D.L.C. No 45
T22S, R8W, W.M.
October, 1947 Scale: 1"=200'

EAST 1797.2' SE COR D.L.C. 45
Fd 4" Stake & 1 BT.

COUNTY SURVEYORS FILE
DO NOT REMOVE FROM OFFICE

CS FILE FOLDER

CONTAINS

MORE

INFORMATION