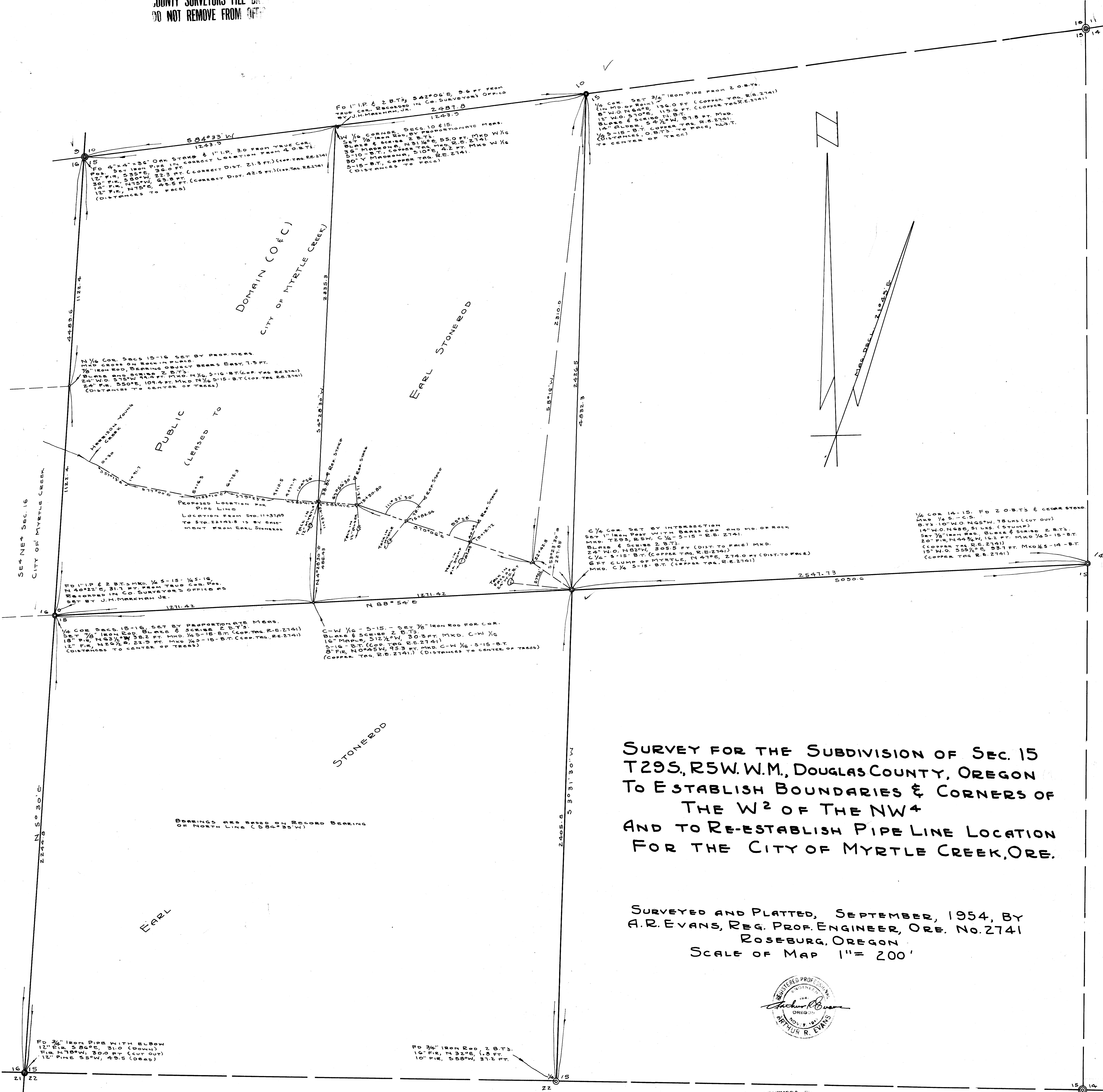
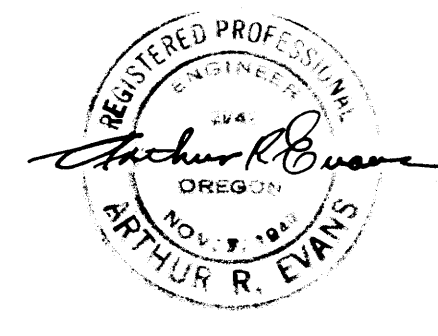


COUNTY SURVEYORS FILE
DO NOT REMOVE FROM OFFICE



**SURVEY FOR THE SUBDIVISION OF SEC. 15
T29S, R5W, W.M., DOUGLAS COUNTY, OREGON
TO ESTABLISH BOUNDARIES & CORNERS OF
THE W² OF THE NW⁴
AND TO RE-ESTABLISH PIPE LINE LOCATION
FOR THE CITY OF MYRTLE CREEK, ORE.**

SURVEYED AND PLATTED, SEPTEMBER, 1954, BY
A.R. EVANS, REG. PROF. ENGINEER, ORE. NO. 2741
ROSEBURG, OREGON
SCALE OF MAP 1" = 200'



COUNTY SURVEYORS FILE
DO NOT REMOVE FROM OFFICE

FILED
RECEIVED

OCT 8 1954

COUNTY SURVEYOR
DOUGLAS COUNTY, ORE, C.S. 2110 41/200