

LEWIS C. BUCK & ALEX H. SAWYERS  
DRAIN OREGON  
SECTIONS 10, 11, 14 & 15 T. 22S. R. 6W. WM

APRIL 1952  
SCALE 1" = 200'

FRED L. DOW  
CIVIL ENGINEER



187 AC. NORTH OF HIWAY

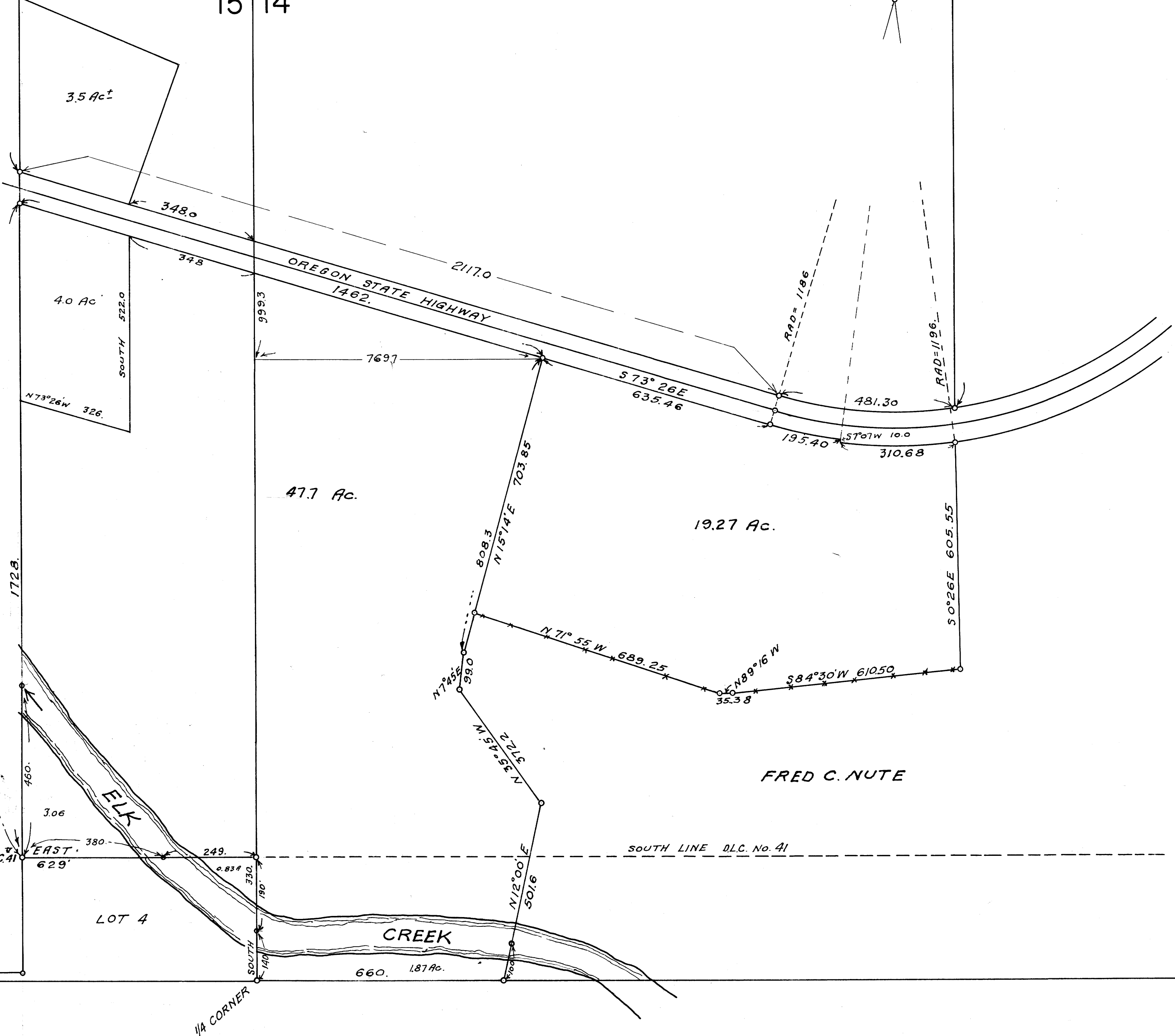
FILED  
RECORDED  
MAY 20 1952  
COUNTY SURVEYOR  
DOUGLAS COUNTY, OREG.

50 Rod STRIP.

T. 22S. R. 6W.

10 11  
15 14

DEED 4950



MAP FILE M 8-73