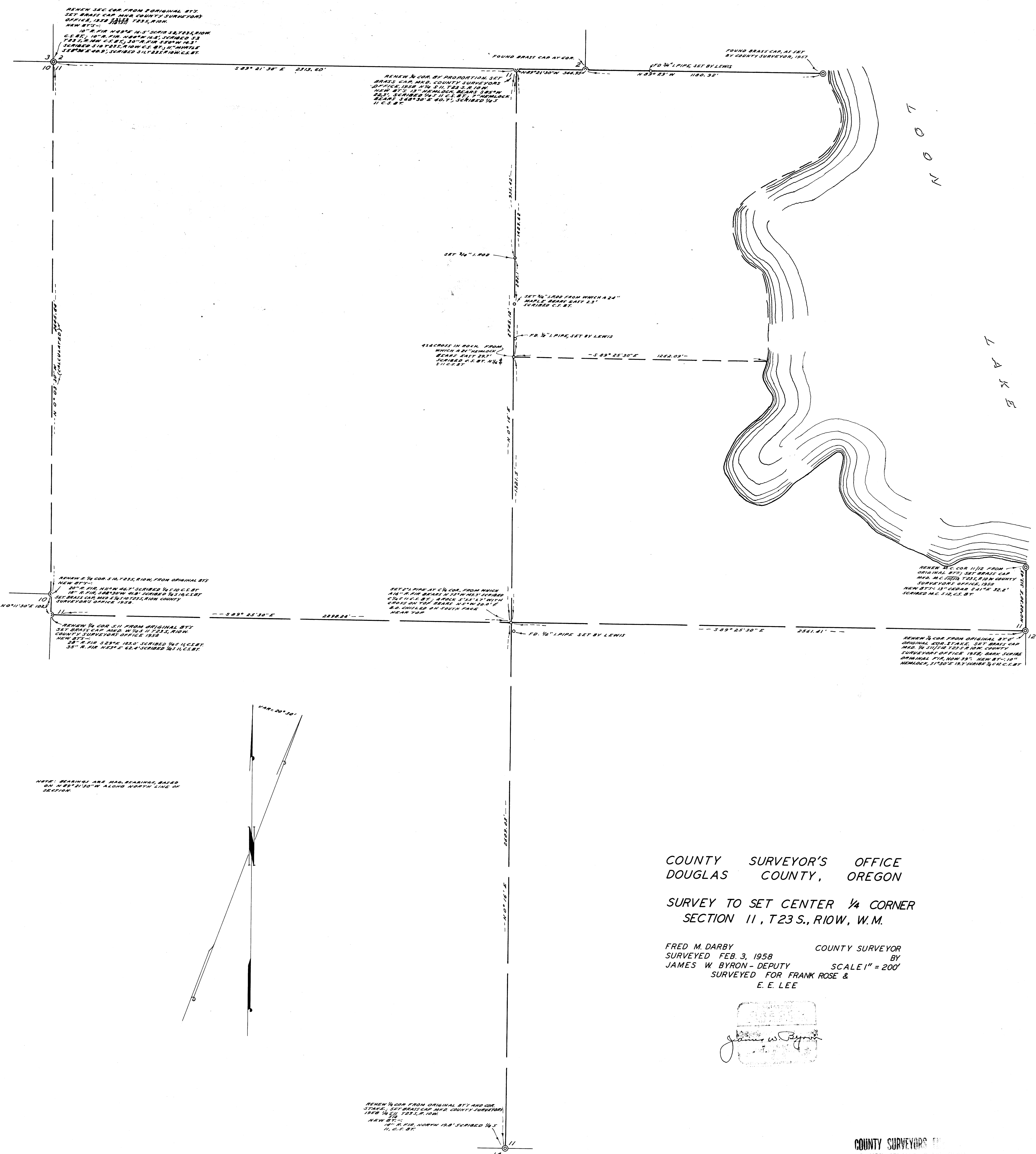


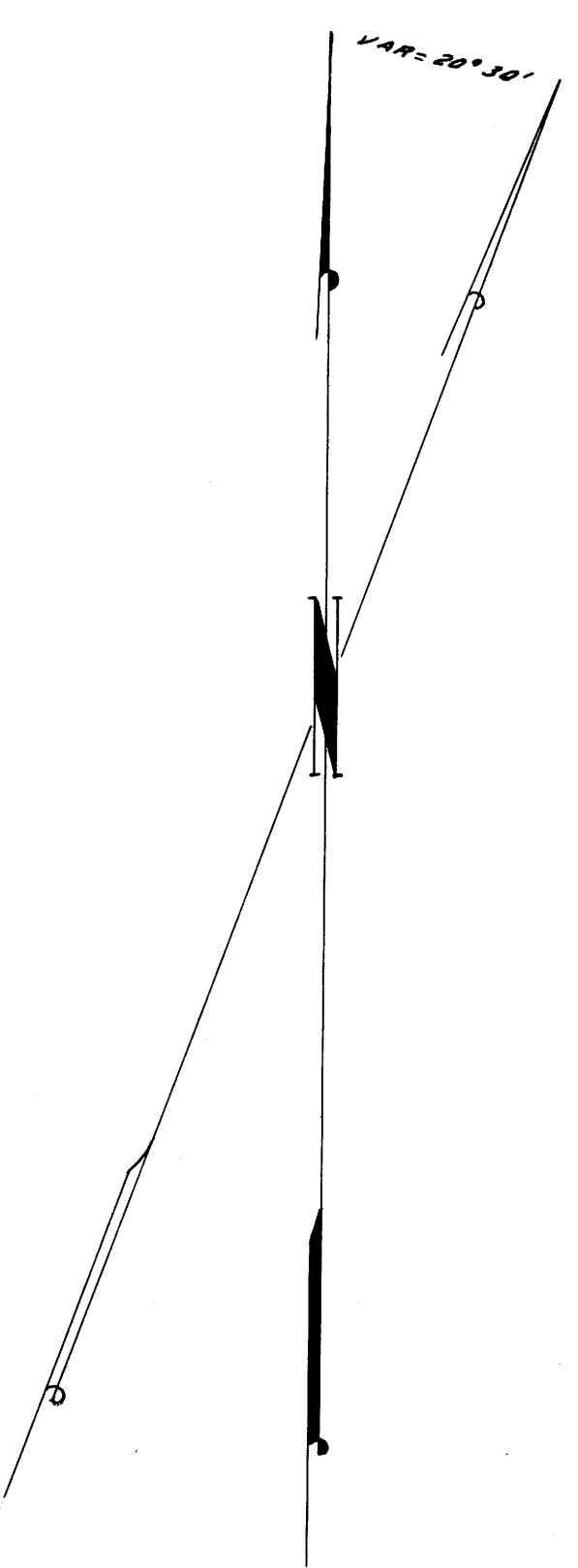
COUNTY SURVEYORS FILE
DO NOT REMOVE FROM FILE



NOOT

L A K E

NOTE: BEARINGS ARE MAG. BEARINGS, BASED ON N 89° 21' 30\"/>



COUNTY SURVEYOR'S OFFICE
DOUGLAS COUNTY, OREGON

SURVEY TO SET CENTER 1/4 CORNER
SECTION 11, T23 S., R10W, W.M.

FRED M. DARBY COUNTY SURVEYOR
SURVEYED FEB. 3, 1958
JAMES W. BYRON - DEPUTY SCALE 1" = 200'
SURVEYED FOR FRANK ROSE &
E. E. LEE

James W. Byron

COUNTY SURVEYORS
DO NOT REMOVE FROM FILE

CS FILE FOLDER

CONTAINS

MORE

INFORMATION