

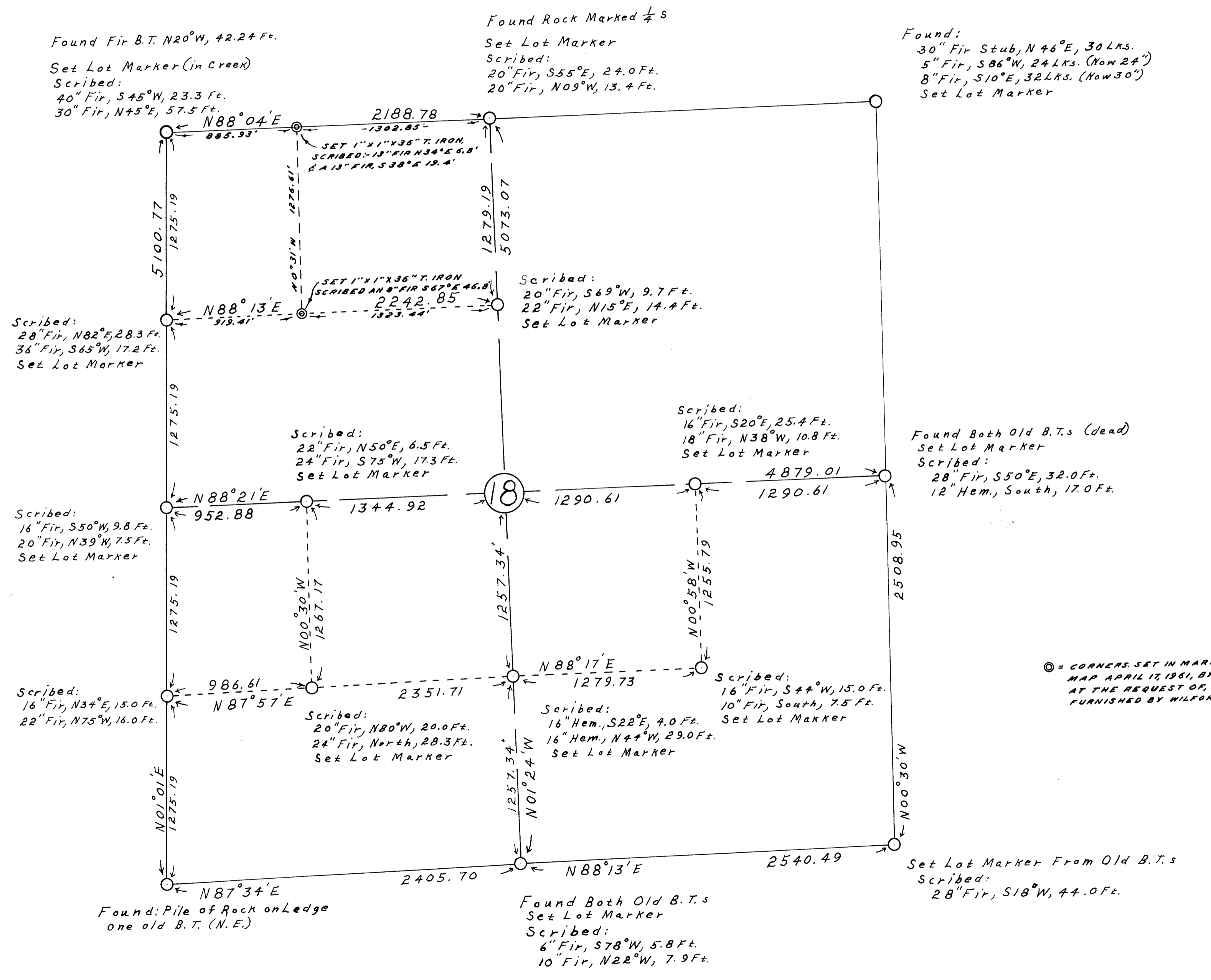
2-8 W
(15-H)(87-H) 94

COUNTY SURVEYORS FILE DATA
DO NOT REMOVE FROM OFFICE

T21S, R6W, W.M. Section 18

Survey Made For Harold Woolley in 1957

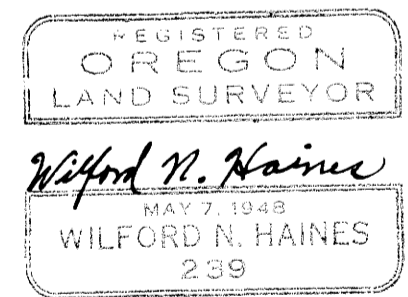
by Wilford N. Haines #239 and Leo J. Martin #363



Note:
All bearings based on
magnetic Var. of 21°30'E.
Needle observation made
at S.W. Cor.
Lot Markers are 1"x1"x36"
iron L rods with brass
caps attached.
Caps are inscribed:
"Wilford N. Haines 239
Survey Point Drain Ore."

Scale:
1" = 500'

⊙ = CORNERS SET IN MARCH, 1961, AND ADDED TO THIS
MAP APRIL 17, 1961, BY THE OFFICE OF THE COUNTY
AT THE REQUEST OF, AND FROM INFORMATION
FURNISHED BY WILFORD N. HAINES.



COUNTY SURVEYORS FILE DATA
DO NOT REMOVE FROM OFFICE

FILED
RECEIVED

DEC 17 1957

COUNTY SURVEYOR
DOUGLAS COUNTY, ORE.
F.B.H. 31 (H-68)
MAP FILE M.B. 7-7