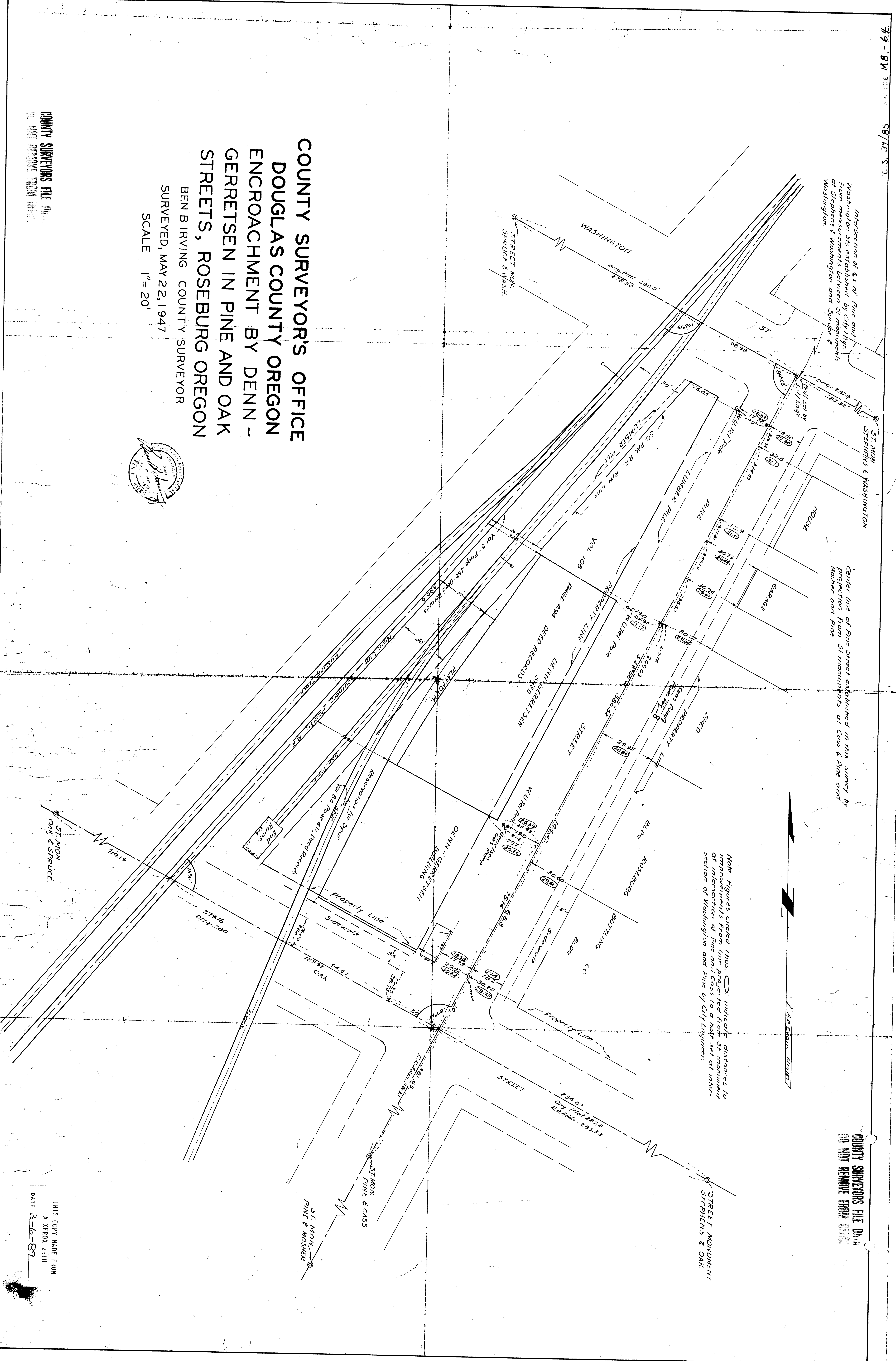


Intersection of E3 of Pine and Washington Sts established by City Engineer. From measurements between St. monument of Stephens & Washington and Spruce & Washington.

Center line of Pine Street established in this survey by projection from St. monuments of Cass & Pine and Mosher and Pine.

Note: Figures circled thus: indicate distances to improvements from line projected from St. monument at intersection of Pine and Cass to a bay set at intersection of Washington and Pine by City Engineer.



**COUNTY SURVEYOR'S OFFICE  
DOUGLAS COUNTY OREGON  
ENCROACHMENT BY DENN -  
GERRETSEN IN PINE AND OAK  
STREETS, ROSEBURG OREGON**

BEN BIRVING COUNTY SURVEYOR  
SURVEYED, MAY 22, 1947  
SCALE 1" = 20'



COUNTY SURVEYORS FILE NO. 79-8W  
DO NOT REMOVE FROM OFFICE

COUNTY SURVEYORS FILE NO. 79-8W  
DO NOT REMOVE FROM OFFICE

THIS COPY MADE FROM  
A XEROX 2510  
DATE 3-6-89

CS 39165 MAP FILE M 8 - 64