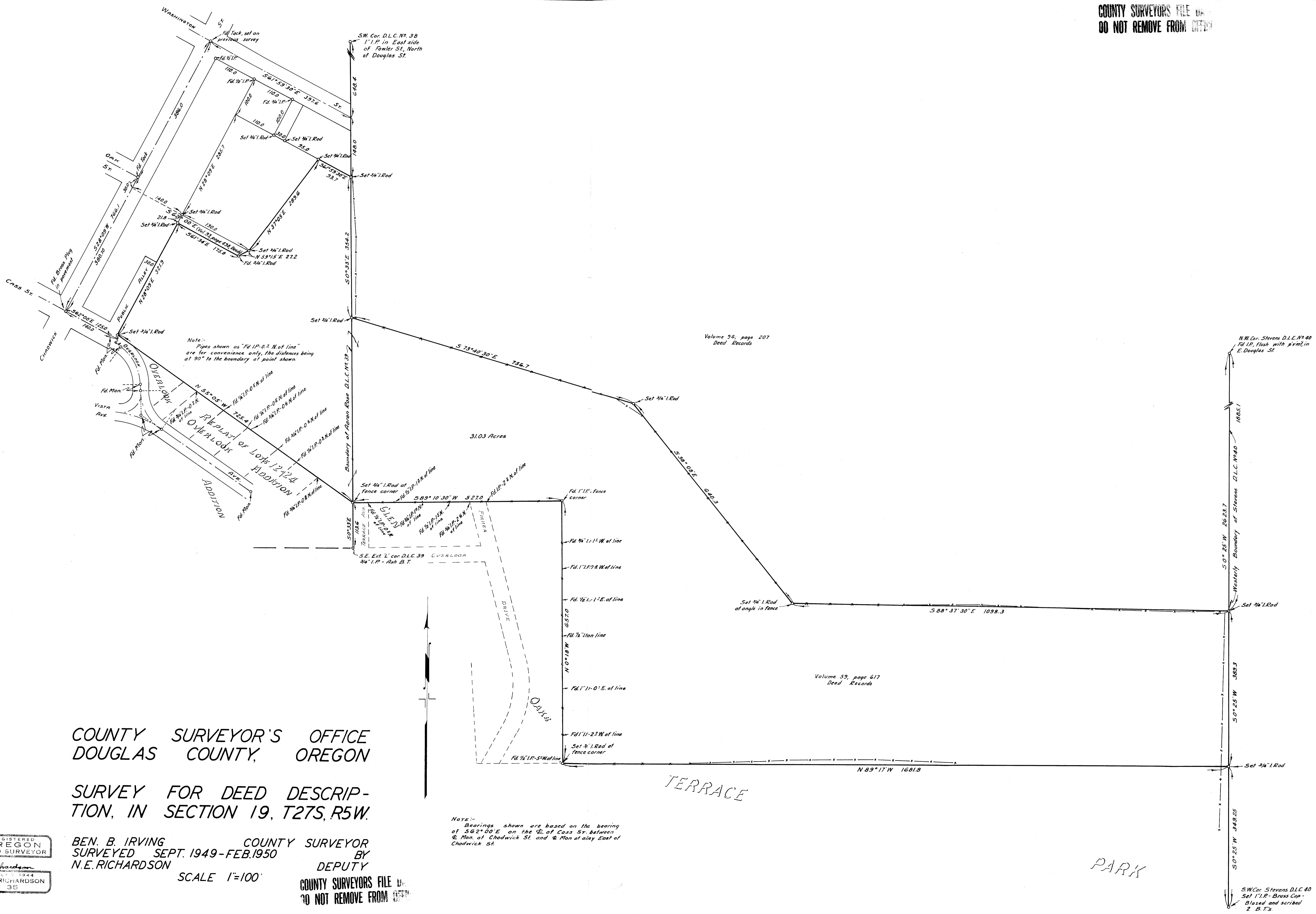


COUNTY SURVEYORS FILE
DO NOT REMOVE FROM OFFICE



Note:-
Pipes shown as "Fd IP-0.2 N. of line"
are for convenience only, the distances being
at 90° to the boundary of point shown.

Volume 34, page 207
Dead Records

Volume 35, page 617
Dead Records

Note:-
Bearings shown are based on the bearing
of S62°00'E on the E. of Cass St. between
& Mon. at Chadwick St. and & Mon. at alley East of
Chadwick St.

COUNTY SURVEYOR'S OFFICE
DOUGLAS COUNTY, OREGON

SURVEY FOR DEED DESCRIPTION,
IN SECTION 19, T27S, R5W.

BEN. B. IRVING COUNTY SURVEYOR
SURVEYED SEPT. 1949-FEB. 1950
BY N.E. RICHARDSON DEPUTY

SCALE 1"=100'

COUNTY SURVEYORS FILE
DO NOT REMOVE FROM OFFICE



PARK

S.W. Cor. Stevens D.L.C. 40
Set 1" I.P. - Brass Cup -
Blazed and scribed
2 B.T.'s