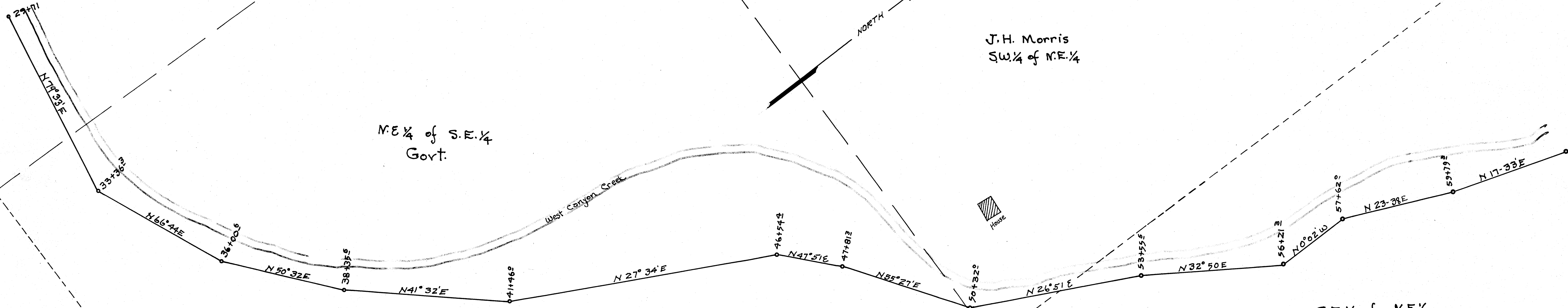


COUNTY SURVEYORS FILE
DO NOT REMOVE FROM OFFICE



J. H. Morris
S.W. 1/4 of N.E. 1/4

N.E. 1/4 of S.E. 1/4
Gort.

S.E. 1/4 of N.E. 1/4
Gort.

COUNTY SURVEYORS FILE
DO NOT REMOVE FROM OFFICE