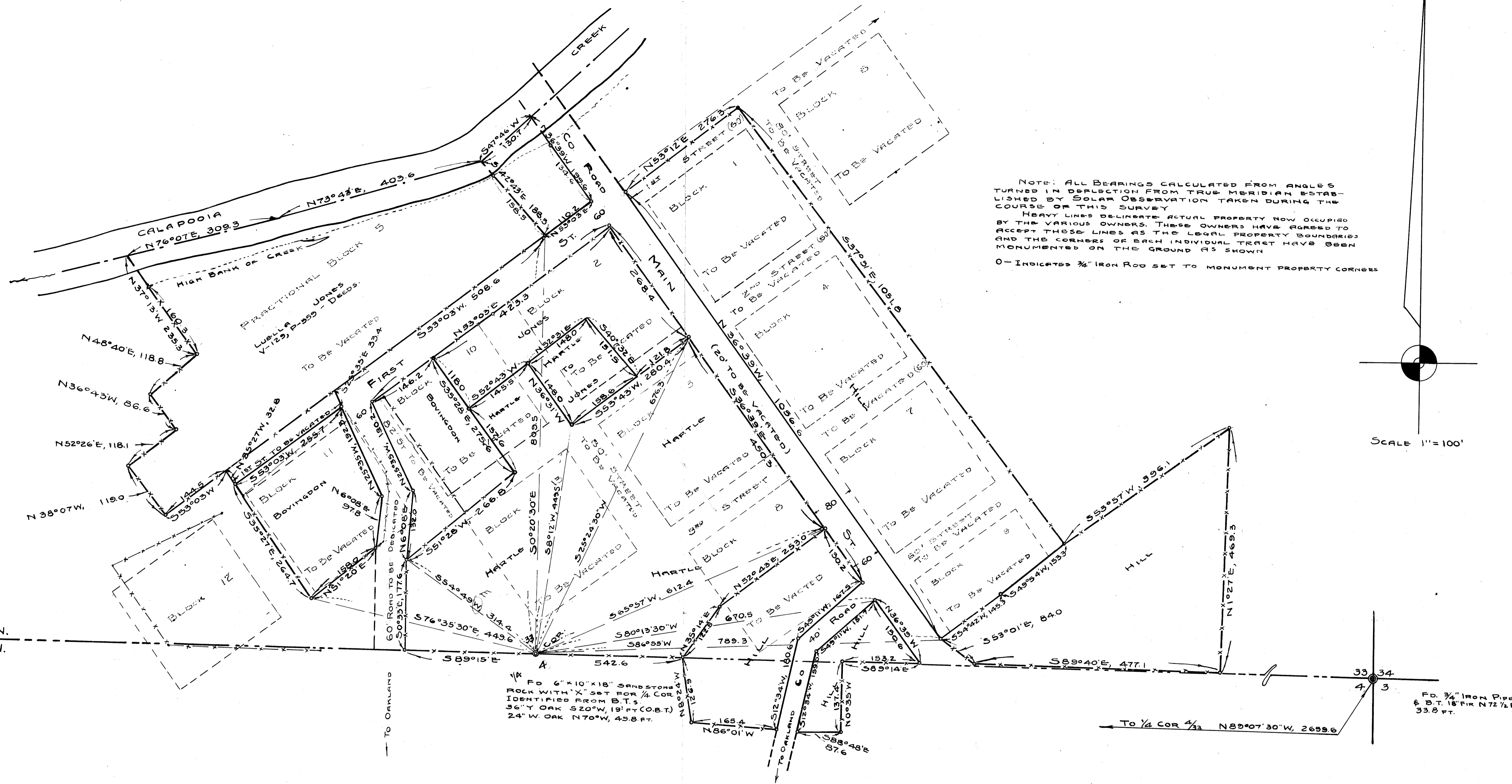
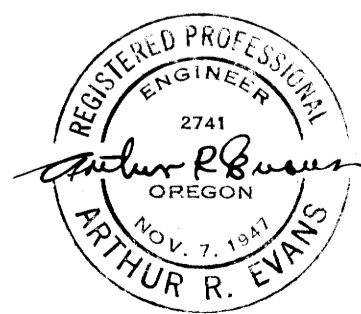


COUNTY SURVEYORS FILE DATA
DO NOT REMOVE FROM OFFICE



COUNTY SURVEYOR'S OFFICE
DOUGLAS COUNTY OREGON
SURVEY FOR DEED DESCRIPTIONS
& TO ESTABLISH PROPERTY CORNERS
IN TOWN OF OLD OAKLAND, ORE, & VICINITY
SEC. 33, T245, R5W. & SEC. 4, T 255, R5W, WM.



BEN B. IRVING COUNTY SURVEYOR
SURVEYED & PLATTED JULY - SEPT. 1950, BY
A. R. EVANS, DEPUTY COUNTY SURVEYOR

COUNTY SURVEYORS FILE DATA
DO NOT REMOVE FROM OFFICE