

C.S. FILE 45/275 Vol. 5 Pg. 45

OFFSETS FROM SURVEYED REFERENCE LINE TO TRUE LINE BETWEEN 1/4 CORNERS.

Stake No. 1	4.5	NORTH
" 2	4.0	NORTH
" 3	19.9	NORTH
" 4	13.2	SOUTH
" 5	22.4	SOUTH
" 6	21.05	SOUTH
" 7	25.6	SOUTH
" 8	33.0	SOUTH
" 9	36.4	SOUTH

DO NOT REMOVE FROM FILE

SET 1" IRON PIPE - BRASS CAP M'D COUNTY SURVEYOR'S OFFICE 27|26 T20S R6W 1954 34|35

FD. 40" FIR SNAG - N59°E 13.2 SCRIBED S26 BT

" SLAB OF BT. - N30°W 2.7 SCRIBED S27 BT.

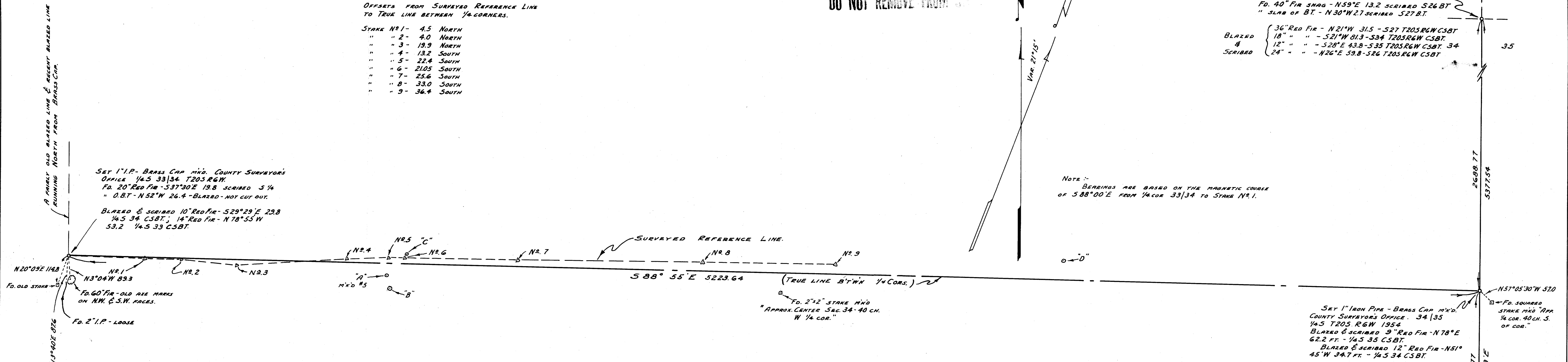
BLAZED { 36" RED FIR - N21°W 31.5 - S27 T20S R6W CSBT

18" " " - S21°W 61.3 - S34 T20S R6W CSBT.

# 12" " " - S28°E 43.8 - S35 T20S R6W CSBT. 34

SCRIBED { 24" " " - N26°E 59.8 - S26 T20S R6W CSBT

NOTE: BEARINGS ARE BASED ON THE MAGNETIC COURSE OF 588°00'E FROM 1/4 COR 33|34 TO STAKE No. 1.



SET 1" I.P. - BRASS CAP M'D. COUNTY SURVEYOR'S OFFICE 1/4.5 33|34 T20S R6W.

FD. 20" RED FIR - S37°30'E 19.8 SCRIBED S 1/4

" O.B.T. - N52°W 26.4 - BLAZED - NOT CUT OUT.

BLAZED & SCRIBED 10" RED FIR - S29°29'E 29.8

1/4.5 34 CSBT.; 14" RED FIR - N78°55'W

53.2 1/4.5 33 CSBT.

N20°09'E 114.8

N3°04'W 89.3

FD. 60" FIR - OLD AXE MARKS ON N.W. & S.W. CORNERS.

FD. 2" I.P. - LOOSE

SURVEYED REFERENCE LINE.

S88°55'E 5223.64 (TRUE LINE B'TW 1/4 CORNERS.)

FD. 2"x2" STAKE M'D APPROX. CENTER SEC. 34-40 CH. W 1/4 COR.

SET 1" IRON PIPE - BRASS CAP M'D. COUNTY SURVEYOR'S OFFICE. 34|35 1/4.5 T20S R6W 1954

BLAZED & SCRIBED 9" RED FIR - N78°E 62.2 FT. - 1/4.5 35 CSBT.

BLAZED & SCRIBED 12" RED FIR - N51°45'W 34.7 FT. - 1/4.5 34 CSBT.

NOTE: POINTS A, B, C, & D WERE MARKED WITH STAKES OF TREE LIMBS, NOT MARKED, EXCEPT A. THESE APPEAR TO HAVE BEEN SET RECENTLY.

A" TO 1/4 COR. 33|34 - N86°50'30"W 1180.3

B" " " " - N84°32'W 1191.7

C" " " " - S89°24'W 1249.0

D" " " " - S89°59'30"W 3681.2

2"x2" CENTER SEC. 34 TO 1/4 COR 33|34 - N87°21'W 2639.6

COUNTY SURVEYOR'S OFFICE DOUGLAS COUNTY, OREGON

LEGAL SURVEY TO ESTABLISH EAST-WEST MID-SECTION LINE, SECTION 34, T20 S, R6 W, W.M.

BEN B. IRVING COUNTY SURVEYOR SURVEYED APRIL 26-29, 1954 1" = 200' SURVEYED FOR C.C. BACKUS



COUNTY SURVEYORS FILE IN DO NOT REMOVE FROM FILE

SET 1" IRON PIPE - BRASS CAP M'D COUNTY SURVEYOR'S OFFICE - 34|35 T20S R6W 1954 3 T21S R6W

FD. 48" FIR - N49°W 19.8 - SCRIBING GONE

" " " - S41°W 23.1 - " "

" " " - N30°E 52.0 - BLAZED - NOT CUT OUT.

BLAZED & SCRIBED 8" CEDAR - N83°E 48.5

535 T20S R6W CSBT.

BLAZED & SCRIBED 14" CEDAR - N41°W 78.0

534 T20S R6W.