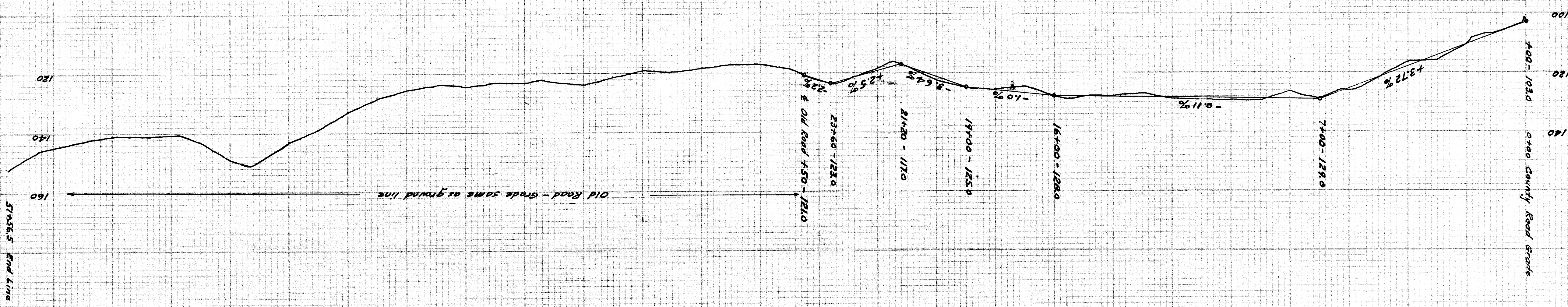


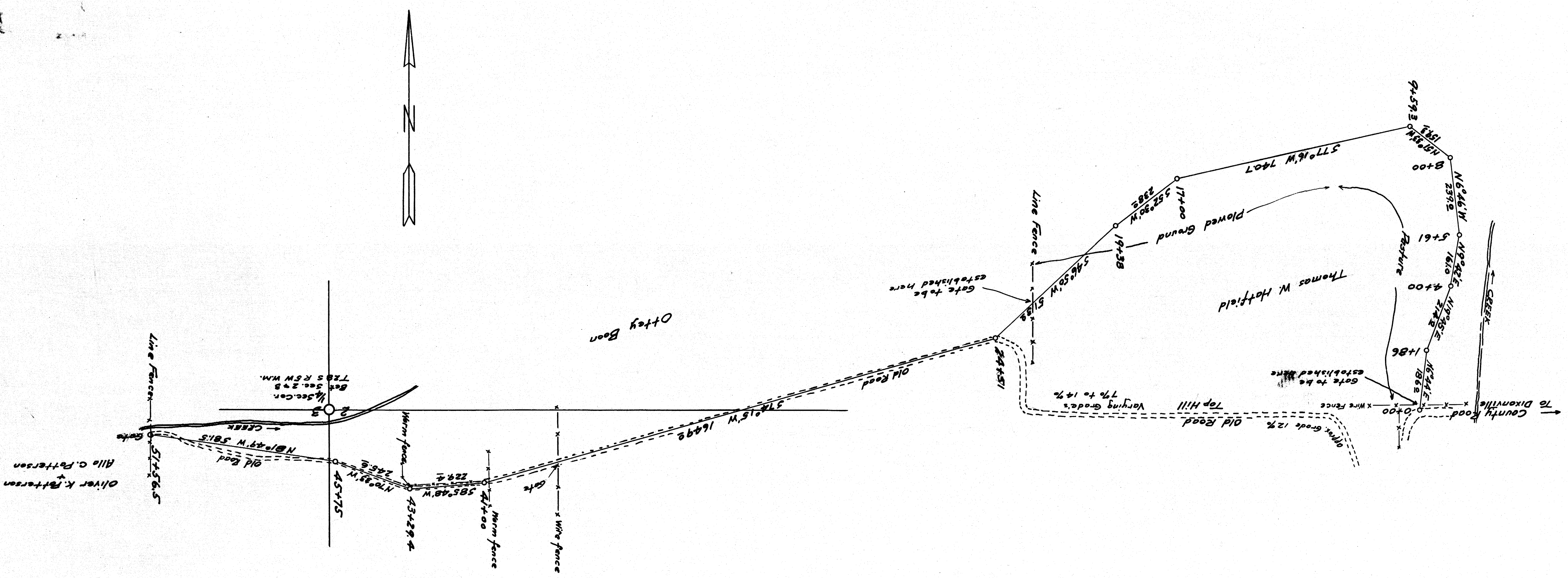
128-5

DO NOT REMOVE FROM OFFICE  
COUNTY SURVEYORS FILE



SCALE { HORIZ. = 1" = 200'  
VERT. = 1" = 20'  
DATE - FEB. 24, 1923.  
COUNTY SURVEYOR  
*[Signature]*

MAP AND PROFILE  
OF  
DOUGLAS COUNTY  
GATEWAY ROAD  
PETITIONED FOR BY  
OLIVER K. PATTERSON  
ALLAN C. PATTERSON  
GEORGE W. ADAMS  
LOCATED IN SEC. 2 & 3  
T28S R5W WM.



DO NOT REMOVE FROM OFFICE  
COUNTY SURVEYORS FILE