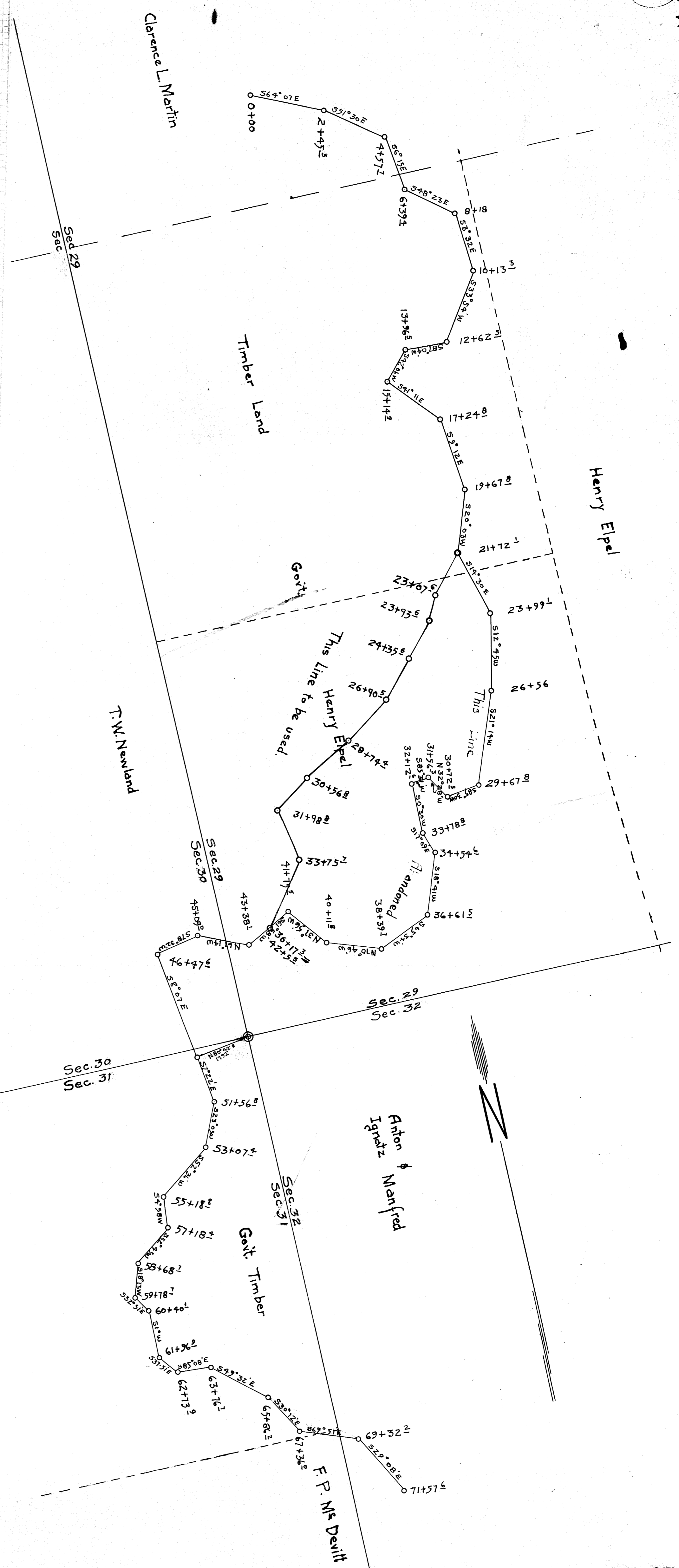


COUNTY SURVEYORS FILE
DO NOT REMOVE FROM OFFICE



COUNTY SURVEYORS FILE
DO NOT REMOVE FROM OFFICE

MARTIN GATEWAY ROAD

Sec. 29, 30, 31, 32 T. 285 R. 8 W. W. M.

Office of H.L. Eppstein (Co-Surveyor)
Nov. 5 1924
Scale 1" = 200'

Petition of: C.L. Martin
Viewers: E.P. Edwards
R.L. Gikens
Chamman: Joe Fredrickson