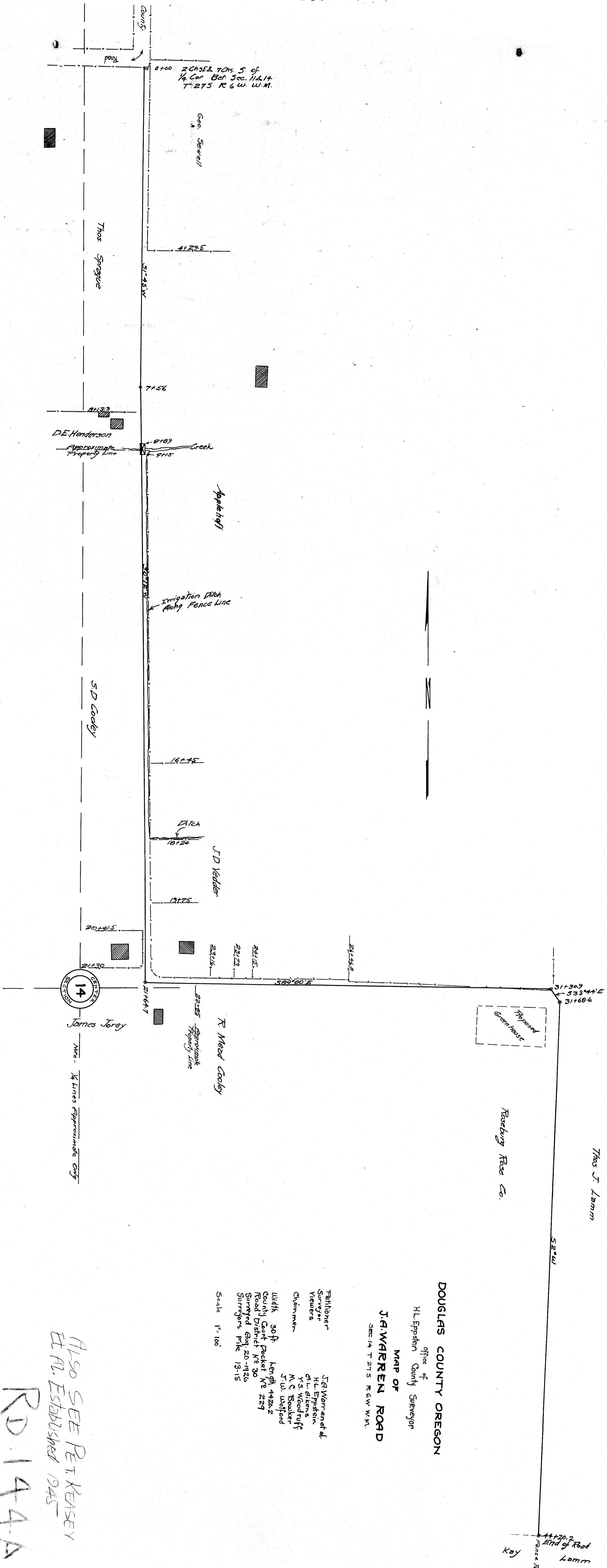


COUNTY SURVEYORS FILE  
DO NOT REMOVE FROM OFFICE

50-8-14



DOUGLAS COUNTY OREGON

Office of  
H.L. Epstein  
County Surveyor  
MAP OF  
J.A. WARREN ROAD  
SEC. 14 T. 27 S. R. 6 W. W.M.

Tellinger  
Surveyor  
Vetters  
Chainmen  
J.G. Warren et al.  
H.L. Epstein  
G.L. Gilens  
V.S. Woodruff  
M.C. Boulker  
J.W. Wolford  
Width 30 ft. length 4420.2  
County Grant Pocket No 229  
Road District No 30  
Surveyed Aug. 20-1926  
Surveyors File 13-15  
Scale 1" = 100'

ALSO SEE PET. KENSEY  
ET AL. ESTABLISHED 1945

RD. 144A

T27-6

COUNTY SURVEYORS FILE U.  
DO NOT REMOVE FROM OFFICE

Final Order May 3 1927  
Grand Court Journal 151/12 P. 357  
MAP FILE M8-45