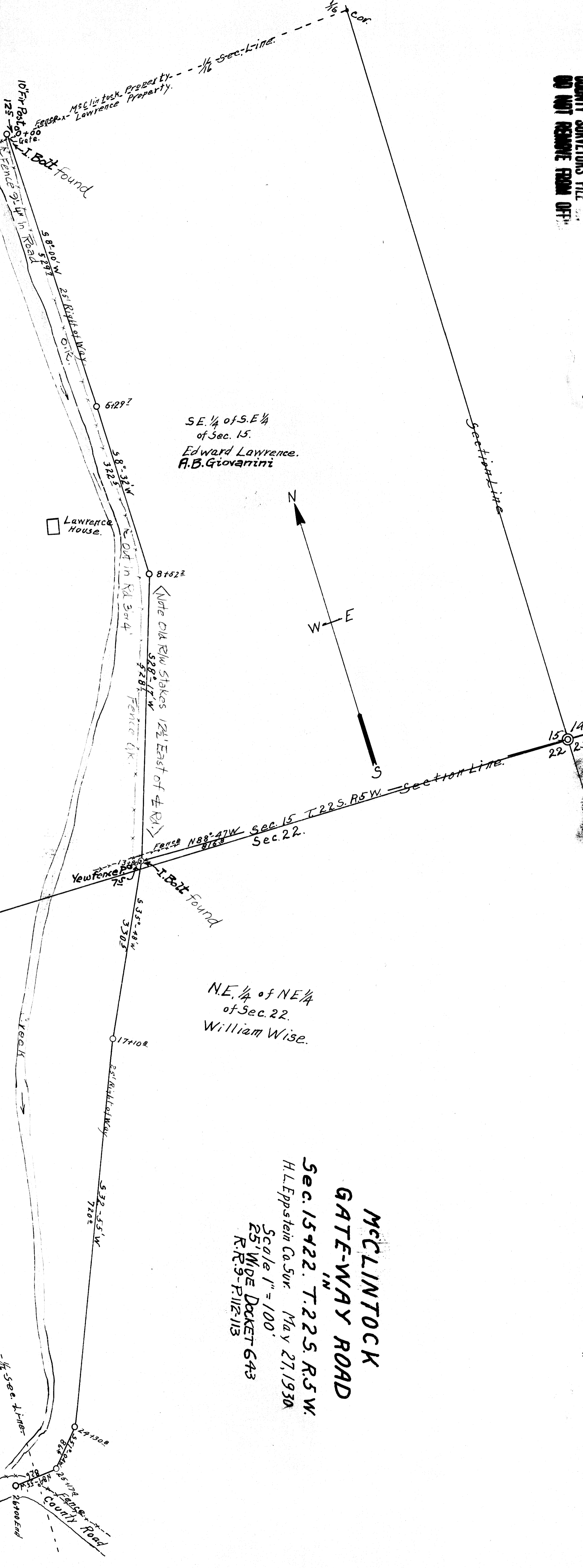


COUNTY SURVEYORS FILE  
DO NOT REMOVE FROM OFFICE

McClintock House



SE 1/4 of S.E. 1/4 of Sec. 15.  
Edward Lawrence.  
A.B. Giovanini

N.E. 1/4 of N.E. 1/4 of Sec. 22.  
William Wise.

**McCLINTOCK**  
**GATE-WAY ROAD**  
Sec. 15 & 22. T. 22 S. R. 5 W.  
H. L. Epstein Co. Sur. May 27, 1930  
Scale 1" = 100'  
25' WIDE DOCKET 643  
R.R. 9-P112-113

COUNTY SURVEYORS FILE  
DO NOT REMOVE FROM OFFICE