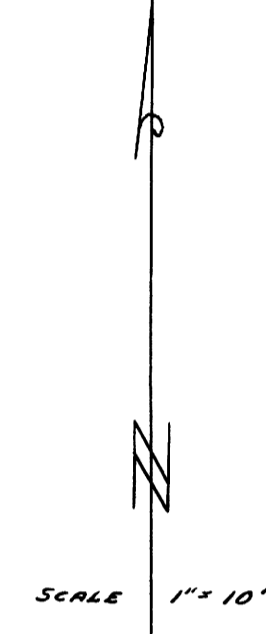
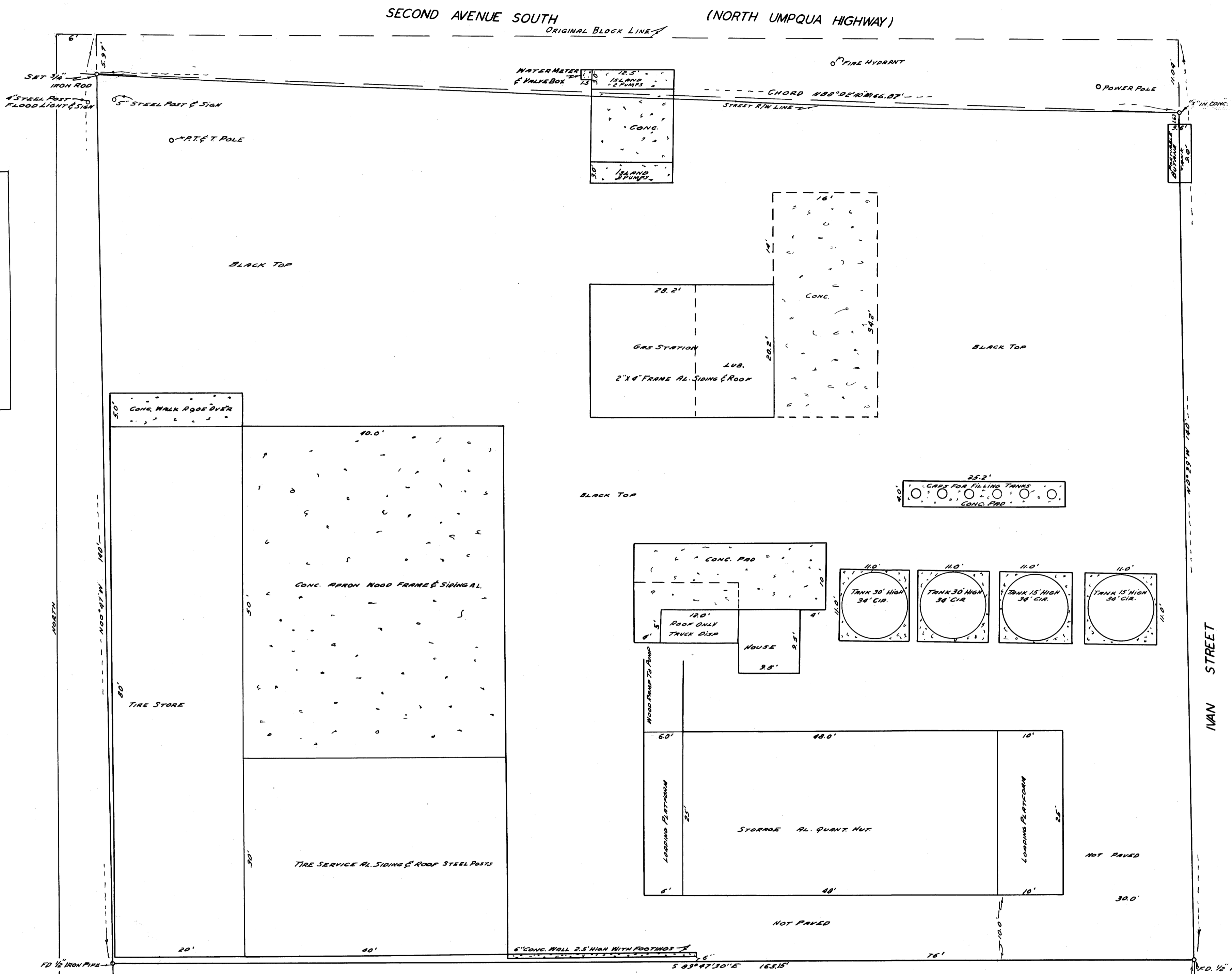


COUNTY SURVEYORS FILE DATA  
DO NOT REMOVE FROM OFFICE



NOTE: BASES FOR BEARINGS, WEST LINE OF  
BLOCK 1, THORNTON'S ADDITION.

COUNTY SURVEYOR'S OFFICE  
DOUGLAS COUNTY OREGON  
SURVEY OF LOTS 1 TO 7 INC. BLK. 1, THORNTON'S ADD.  
TO ROSEBURG OREGON

FOR SUNSET OIL CO.  
SEC 19, T 27 R 5

BEN B. IRVING  
JIM W. BYRON

COUNTY SURVEYOR  
DEPUTY

SURVEYED JULY 15, 1954

REGISTERED  
OREGON  
LAND SURVEYOR

James W. Byron  
NOV. 6, 1953  
JAMES W. BYRON  
303

COUNTY SURVEYORS FILE DATA  
DO NOT REMOVE FROM OFFICE