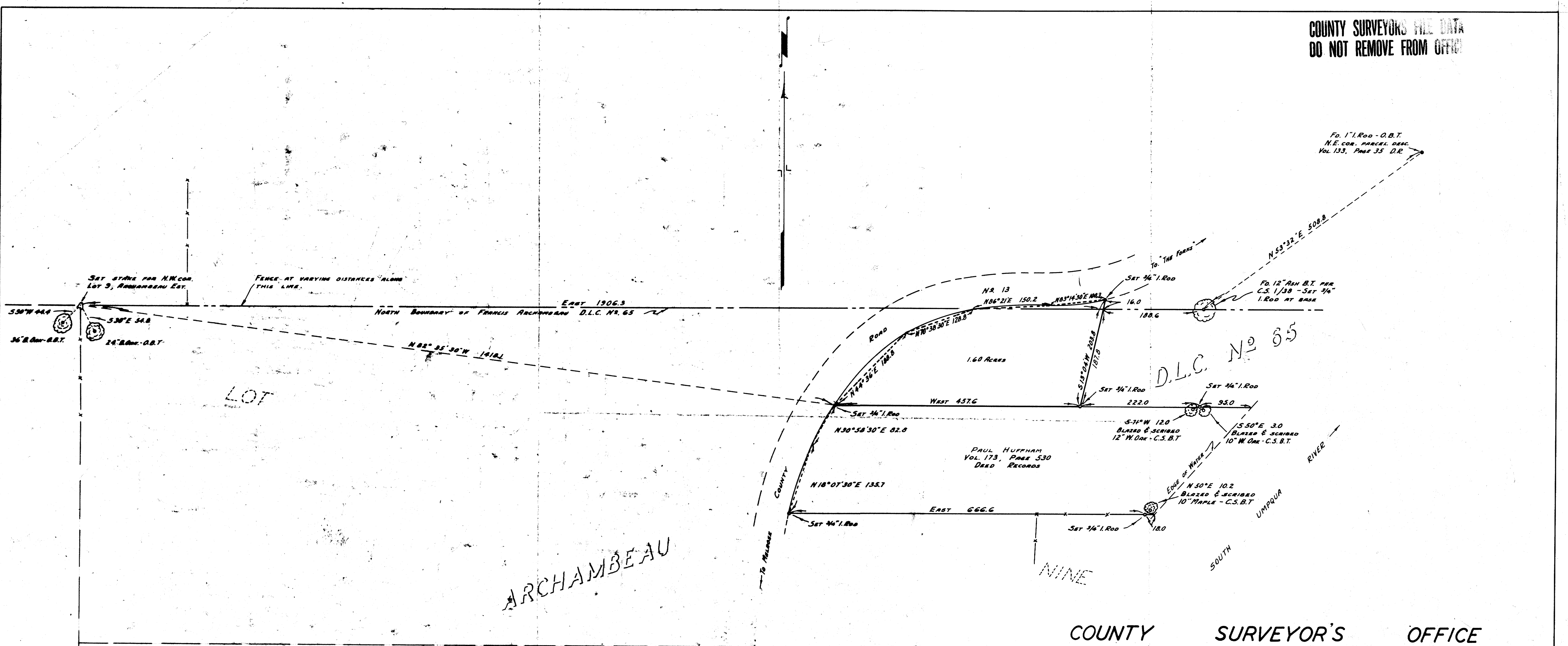


COUNTY SURVEYORS FILE DATA
DO NOT REMOVE FROM OFFICE



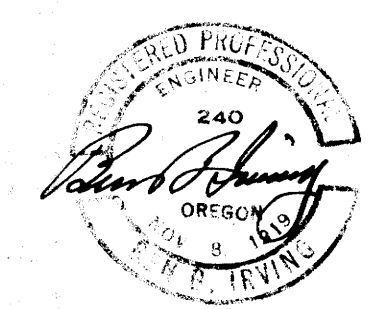
ARCHAMBEAU

COUNTY SURVEYOR'S OFFICE
DOUGLAS COUNTY, OREGON

SURVEY FOR DEED DESCRIPTION
ARCHAMBEAU D.L.C. No. 65,
T26S, R6W, W.M.

BEN B. IRVING COUNTY SURVEYOR
SURVEYED DEC. 15, 1953 SCALE 1" = 100'
SURVEYED FOR PAUL HUFFHAM

NOTE: - BEARINGS SHOWN ARE BASED ON THE BEARING OF EAST ALONG NORTH BOUNDARY LOT 9, D.L.C. No. 65, PER C.S. 1/30.



FRANCIS

COUNTY SURVEYORS FILE DATA
DO NOT REMOVE FROM OFFICE