

COUNTY SURVEYORS FILE DATA
DO NOT REMOVE FROM OFFICE

M. A. PATRICK PROPERTY

SECTION 12, T 20 S, R 12 W, W. M.

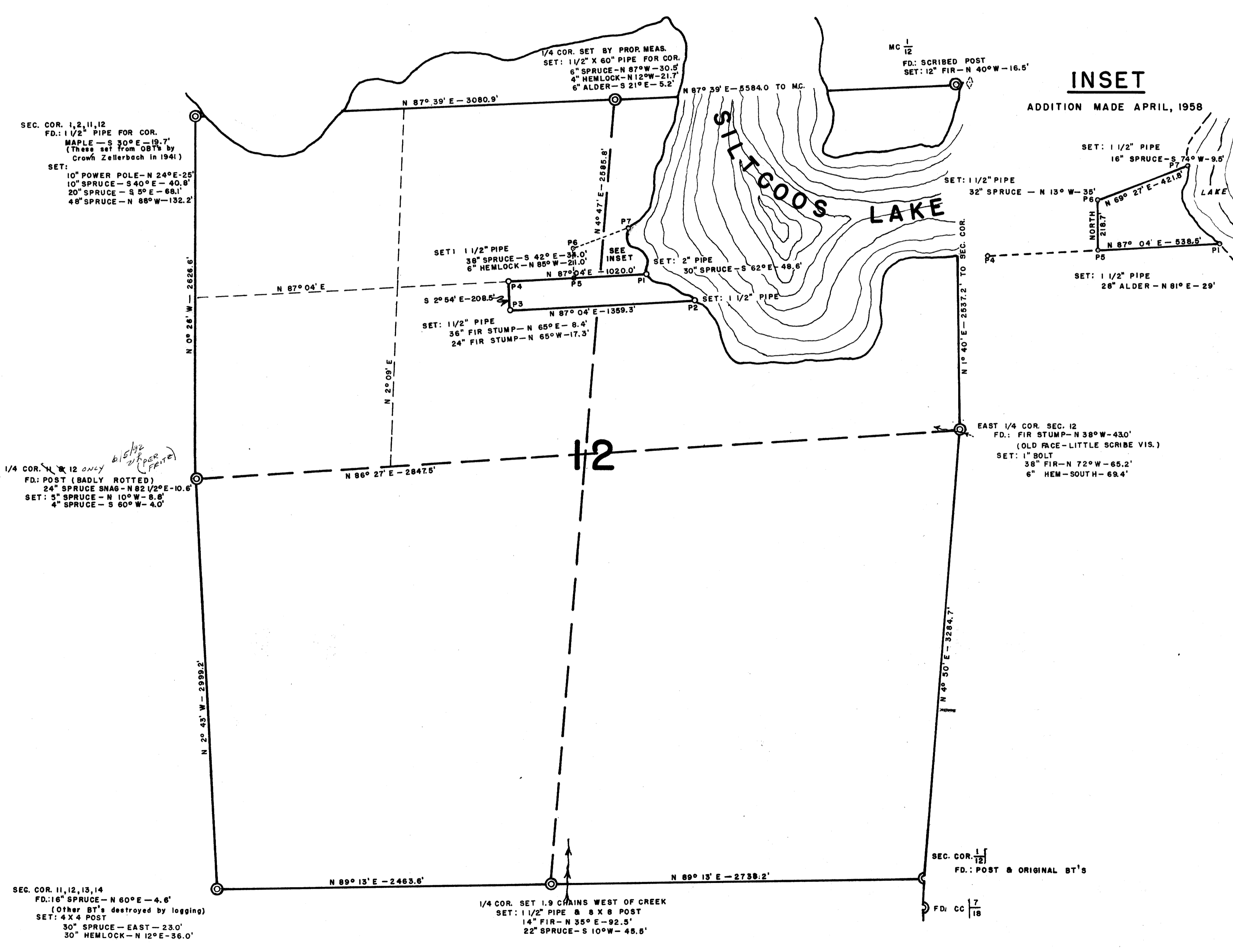
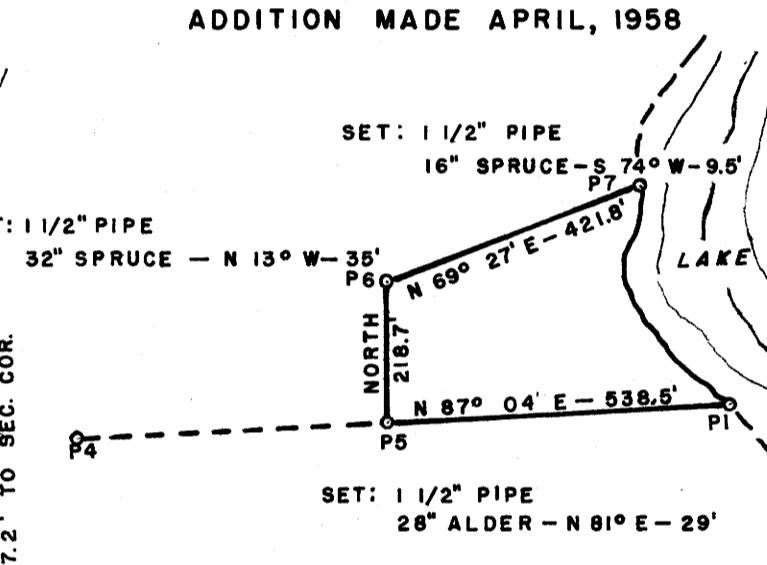
SURVEYED FOR: MRS. M. A. PATRICK FEBRUARY, 1958

SURVEYED BY: G. R. LECKLIDER, ENG'R. SCALE: 1" = 500'



INSET

ADDITION MADE APRIL, 1958



FILED
RECEIVED
FEB 7 1958

COUNTY SURVEYOR
DOUGLAS COUNTY, ORE.
MAP FILE M18-38 P

DO NOT REMOVE FROM OFFICE