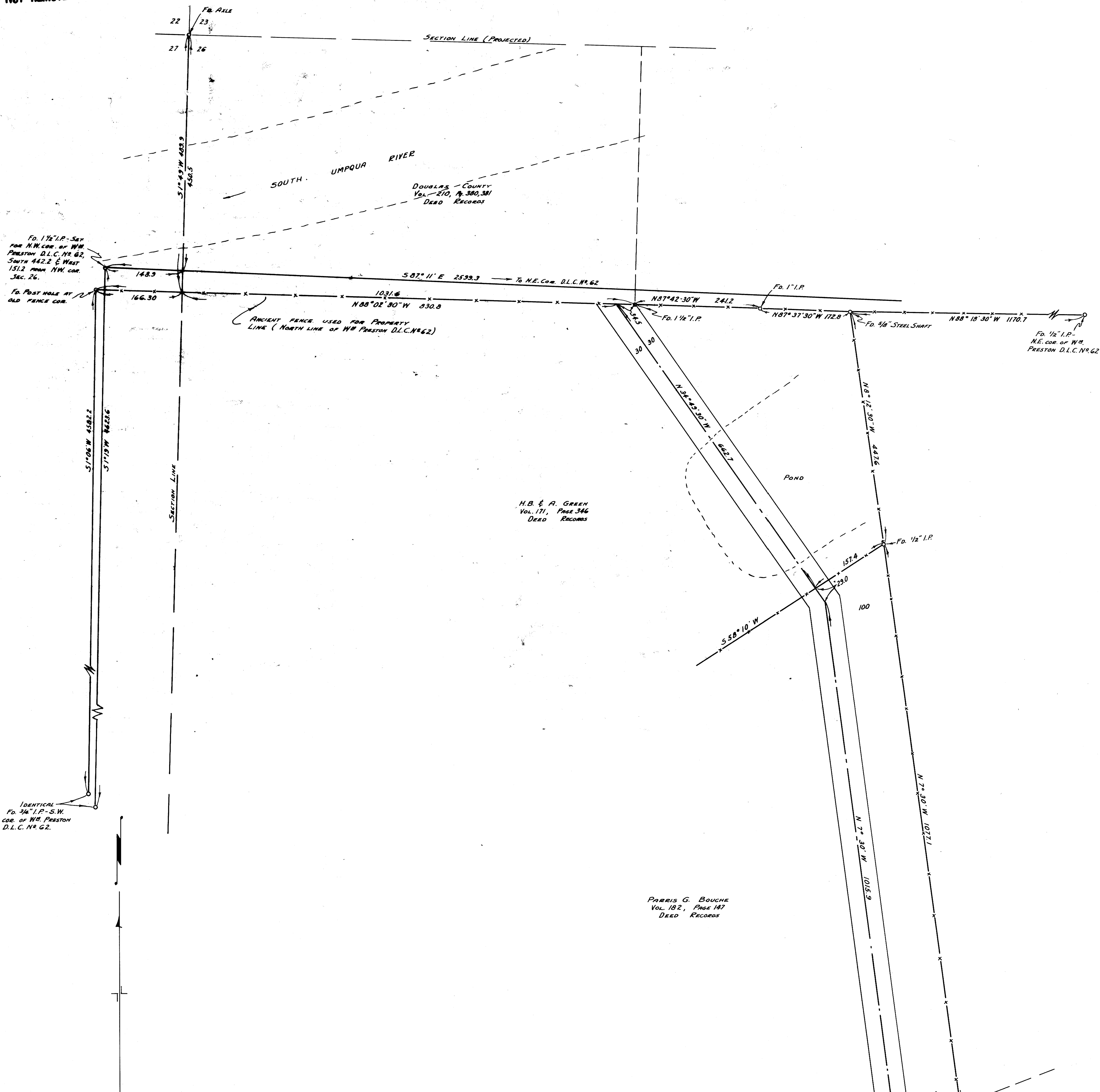


COUNTY SURVEYORS FILE DATA  
DO NOT REMOVE FROM OFFICE

C.S. FILE #5/139  
MAP FILE M8-34



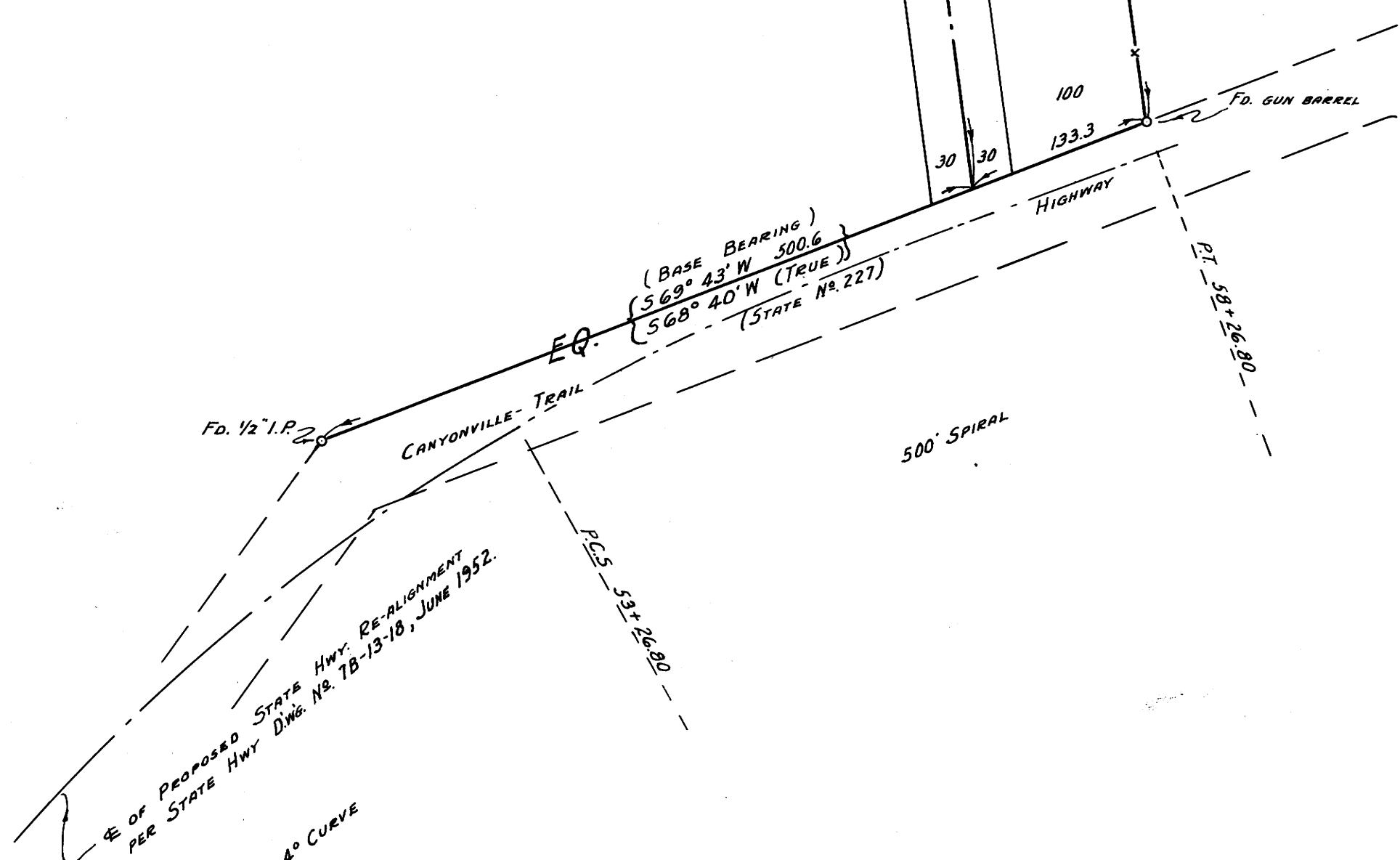
NOTE:-  
BEARINGS SHOWN ARE BASED ON  
THE DEED BEARING ON THE NORTH LINE  
OF STATE HWY. 87W, PER VOL. 182, PAGE  
147, OF DEED RECORDS, I.E. S 69° 43' W  
NOTE EQUATION TO TRUE BEARINGS  
OBTAINED FROM TIES AS SHOWN ON DEED.  
STATE HWY. DEPT. DNG. N° 7B-13-18.



COUNTY SURVEYOR'S OFFICE  
DOUGLAS COUNTY, OREGON

SURVEY FOR DEED DESCRIPTIONS,  
SECTION 26, T30 S, R5 W, W.M.

BEN B. IRVING COUNTY SURVEYOR  
SURVEYED JAN., FEB., 1953 SCALE 1" = 100'  
SURVEYED FOR COUNTY PARK DEPT.



COUNTY SURVEYORS FILE DATA  
DO NOT REMOVE FROM OFFICE

C.S. FILE 45/139  
MAP FILE M8-34

76-8 W