

Section 35 T21S, R6W, W.M.

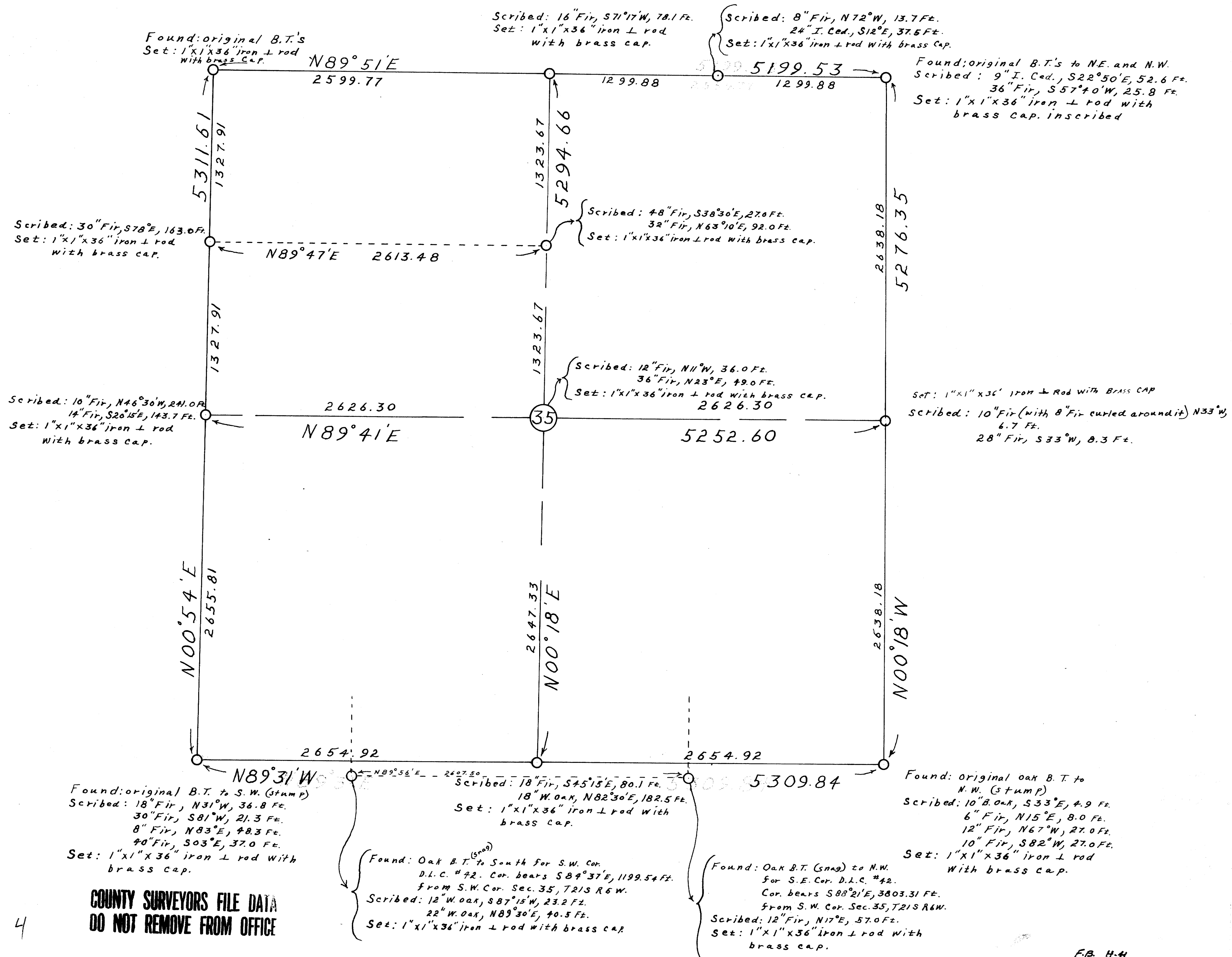
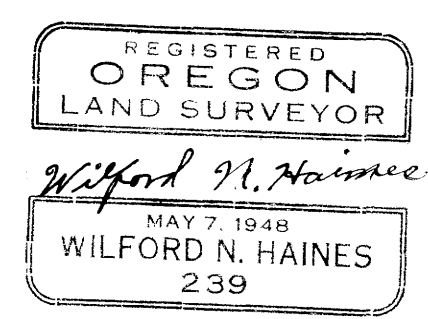
FILED
RECEIVED
JAN 21 1958
COUNTY SURVEYOR
DOUGLAS COUNTY, ORE.

Survey made for Harold Woolley in
December, 1957 to determine lines
and corners.

Note: All bearings based on magnetic
needle observation at S.E. Corner.

Brass caps attached to 1"x1"x36" iron
L rods are inscribed "Wilford N.
Haines 239 Survey Pt. Drain, Ore."

Scale: 1" = 500'



COUNTY SURVEYORS FILE DATA
DO NOT REMOVE FROM OFFICE