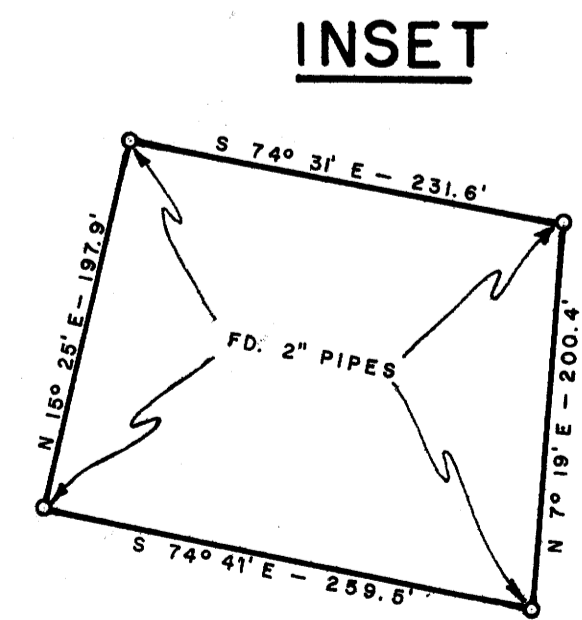
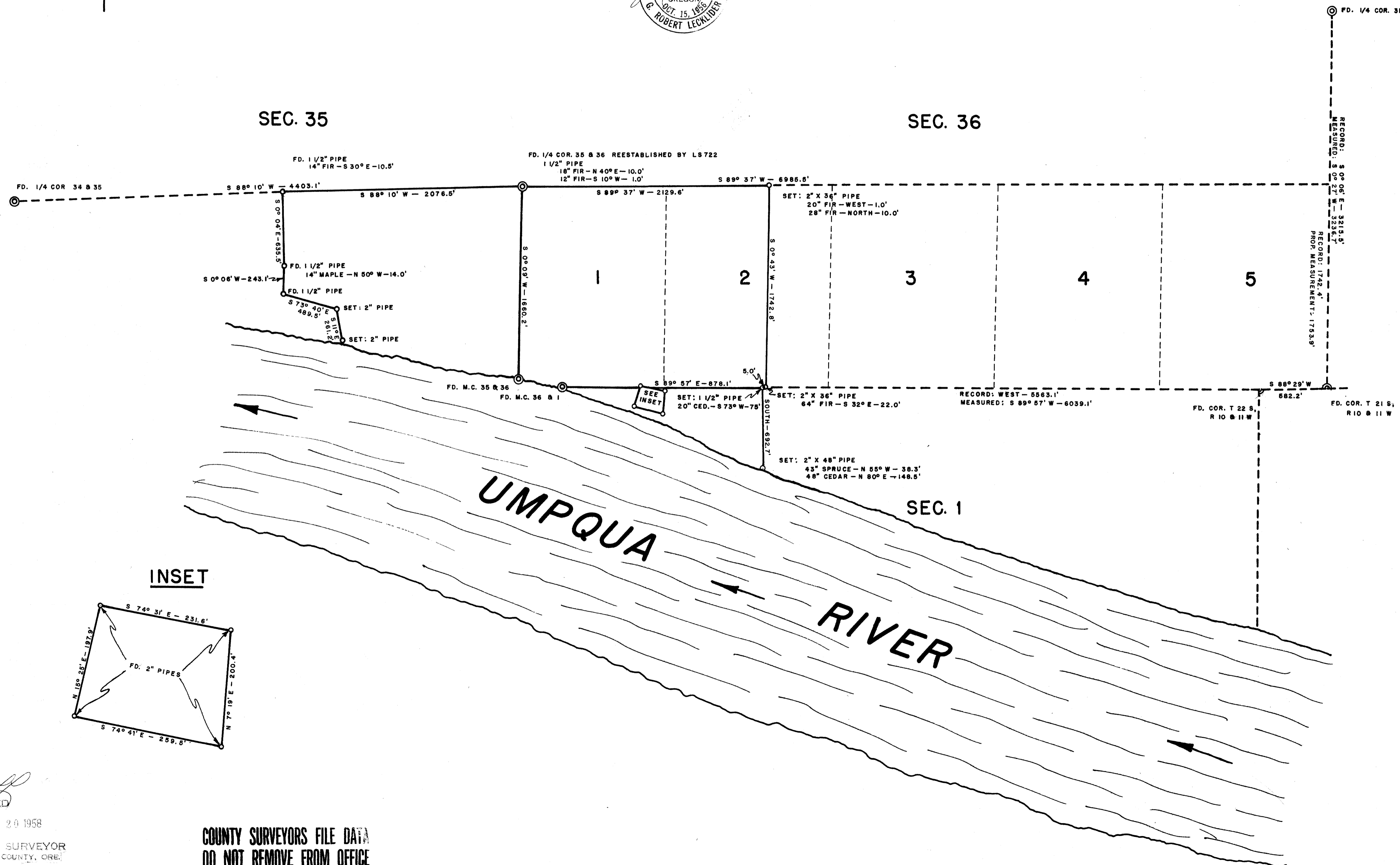
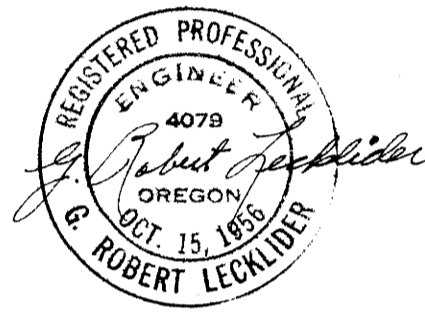


# MAP OF UMPQUA QUARRY PROPERTY SECTIONS 35 & 36, T 21 S, R 11 W, & SECTION 1, T 22 S, R 11 W, W.M.

SURVEYED FOR: GENERAL CONSTRUCTION COMPANY  
SURVEYED BY: G. R. LECKLIDER - ENGINEER

JANUARY, 1958

SCALE: 1" = 500'



FILED  
RECEIVED  
JAN 20 1958  
COUNTY SURVEYOR  
DOUGLAS COUNTY, ORE.

COUNTY SURVEYORS FILE DATA  
DO NOT REMOVE FROM OFFICE