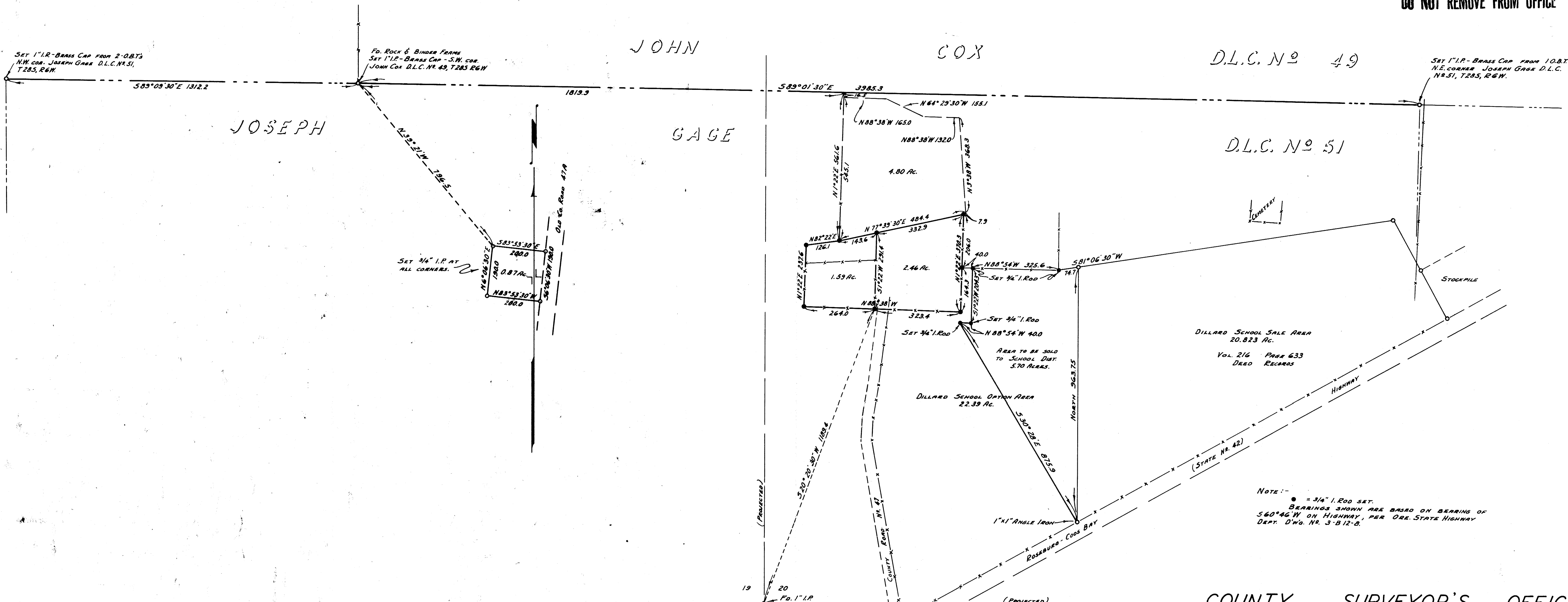


COUNTY SURVEYORS FILE DATA
DO NOT REMOVE FROM OFFICE



D.L.C. No 49

D.L.C. No 51

DILLARD SCHOOL SALE AREA
20.823 Ac.
VOL. 216 PAGE 633
DEED RECORDS

DILLARD SCHOOL OPTION AREA
22.39 Ac.

NOTE: \odot = 3/4" I. ROD SET.
BEARINGS SHOWN ARE BASED ON BEARING OF
 $560^{\circ}46'W$ ON HIGHWAY, PER ORE. STATE HIGHWAY
DEPT. DWG. NO. 3-812-B.

COUNTY SURVEYOR'S OFFICE
DOUGLAS COUNTY, OREGON
SURVEY FOR DEED DESCRIPTIONS
SECTION 20, T28 S, R6 W.



BEN B. IRVING COUNTY SURVEYOR
SURVEYED OCT., 1952 SCALE 1" = 200'

COUNTY SURVEYORS FILE DATA
DO NOT REMOVE FROM OFFICE

SURVEYS AS OF OCT. 1952
ADDED - NOV. 20, 1953.