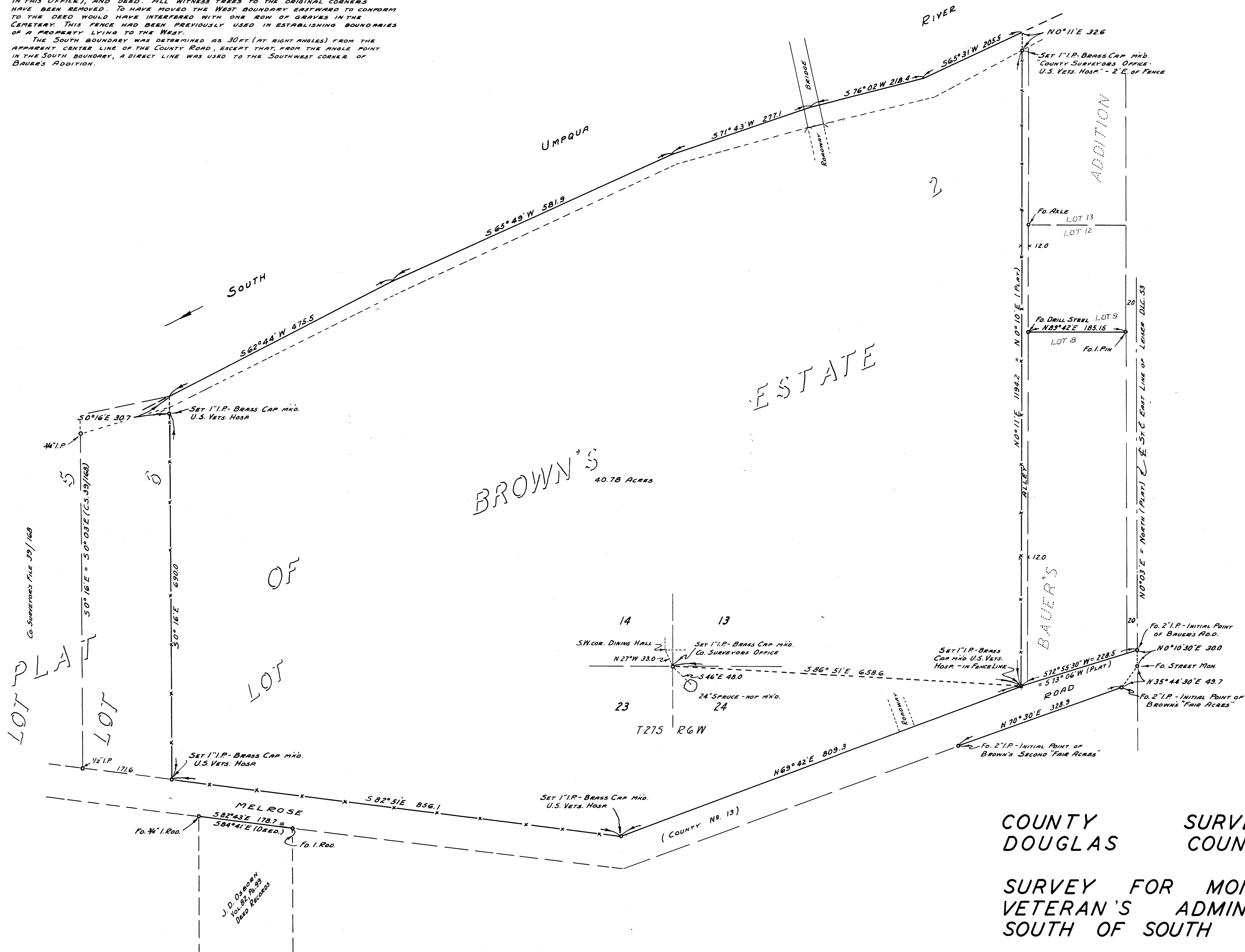


COUNTY SURVEYORS FILE DATA
DO NOT REMOVE FROM OFFICE

NOTE:-
SECTION CORNER 13-14-23-24 WAS DESTROYED A NUMBER OF YEARS AGO. ITS LOCATION, AS SHOWN, WAS DETERMINED BY WEIGHTING TIES GIVEN IN CERTAIN DEEDS, AND IN THE ORIGINAL GOVERNMENT FIELD NOTES OF THE JOHN LEISER DONATION LAND CLAIM No. 53. THE LOCATION THUS DETERMINED IS BELIEVED TO BE SUBSTANTIALLY CORRECT.
THE EAST BOUNDARY WAS CONTROLLED BY BAUER'S ADDITION, AS PLATTED AND FILED IN THE OFFICE OF THE COUNTY CLERK OF DOUGLAS COUNTY, OREGON.
THE PRESENT WEST BOUNDARY, AS FENCED, WAS USED EVEN THOUGH THE EAST-WEST DISTANCE IS GREATER THAN THAT GIVEN IN THE ORIGINAL SURVEY (FILED IN THIS OFFICE), AND DEED. ALL WITNESS TREES TO THE ORIGINAL CORNERS HAVE BEEN REMOVED. TO HAVE MOVED THE WEST BOUNDARY EASTWARD TO CONFORM TO THE DEED WOULD HAVE INTERFERED WITH ONE ROW OF GRAVES IN THE CEMETERY. THIS FENCE HAD BEEN PREVIOUSLY USED IN ESTABLISHING BOUNDARIES OF A PROPERTY LYING TO THE WEST.
THE SOUTH BOUNDARY WAS DETERMINED AS 30 FT. (AT RIGHT ANGLES) FROM THE APPARENT CENTER LINE OF THE COUNTY ROAD, EXCEPT THAT, FROM THE ANGLE POINT IN THE SOUTH BOUNDARY, A DIRECT LINE WAS USED TO THE SOUTHWEST CORNER OF BAUER'S ADDITION.



NOTE:-
BEARINGS SHOWN ARE BASED ON THE BEARING OF THE NORTH LINE OF THE PLAT OF BROWN'S FAIR ACRES - N 70° 30' E

COUNTY SURVEYOR'S OFFICE
DOUGLAS COUNTY, OREGON

SURVEY FOR MONUMENTING U. S. VETERAN'S ADMINISTRATION PARCEL SOUTH OF SOUTH UMPQUA RIVER.

BEN B. IRVING
SURVEYED MAY, 1952

COUNTY SURVEYOR
SCALE 1" = 100'

COUNTY SURVEYORS FILE DATA
DO NOT REMOVE FROM OFFICE

