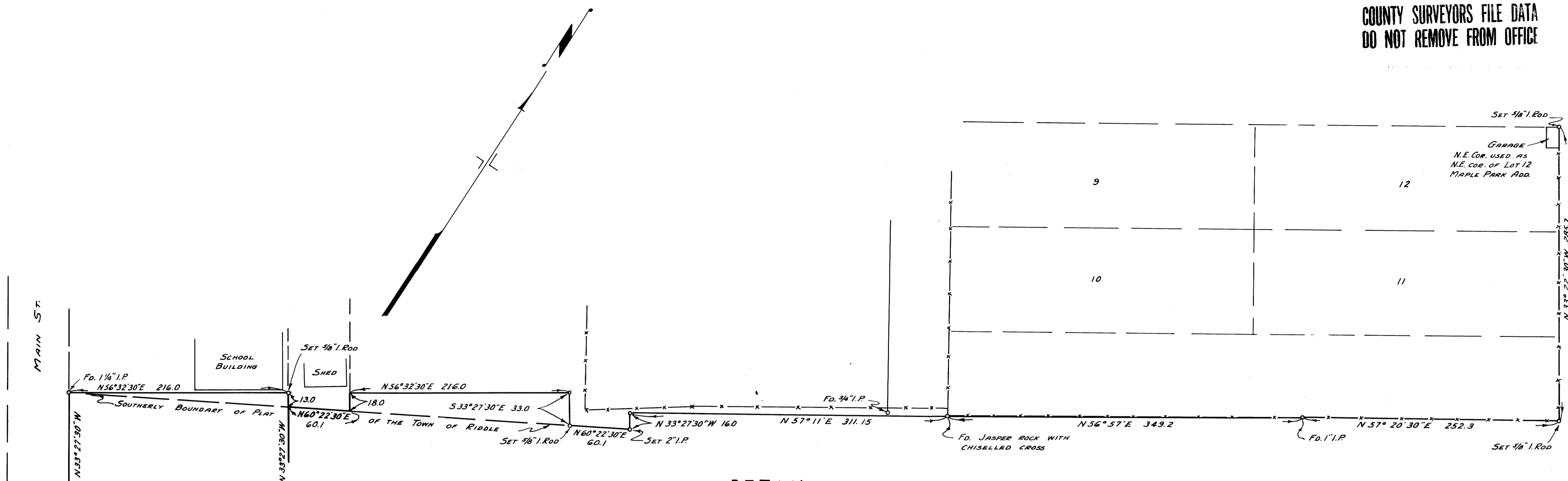
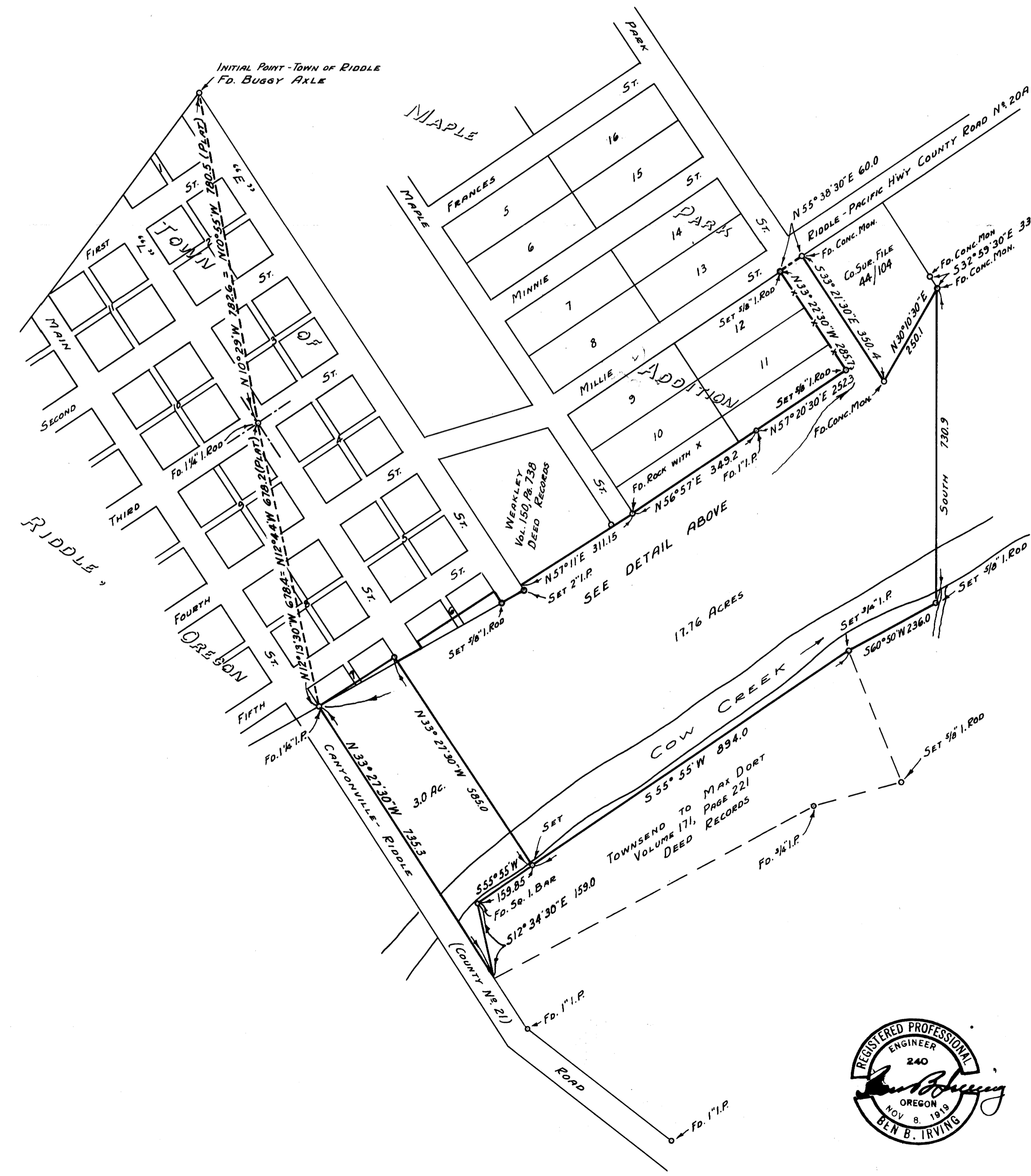


COUNTY SURVEYORS FILE DATA
DO NOT REMOVE FROM OFFICE



DETAIL
SCALE 1"=60'



NOTE:-
BEARINGS SHOWN ARE TRUE, BASED
ON THE BEARING OF S 33° 21' 30" E AS SHOWN
ON WEST LINE OF PARCEL SURVEYED BY
THIS OFFICE, FILED IN C.S. FILE 44/104, AS
ESTABLISHED BY SOLAR OBSERVATION.

COUNTY SURVEYOR'S OFFICE
DOUGLAS COUNTY, OREGON

SURVEY FOR DEED DESCRIPTION, NEAR RIDDLE, OREGON, IN
SECTIONS 23, 24, T30S., R6W., W.M

BEN B. IRVING COUNTY SURVEYOR
SURVEYED NOVEMBER, 1951 SCALE 1"=200'



COUNTY SURVEYORS FILE DATA
DO NOT REMOVE FROM OFFICE