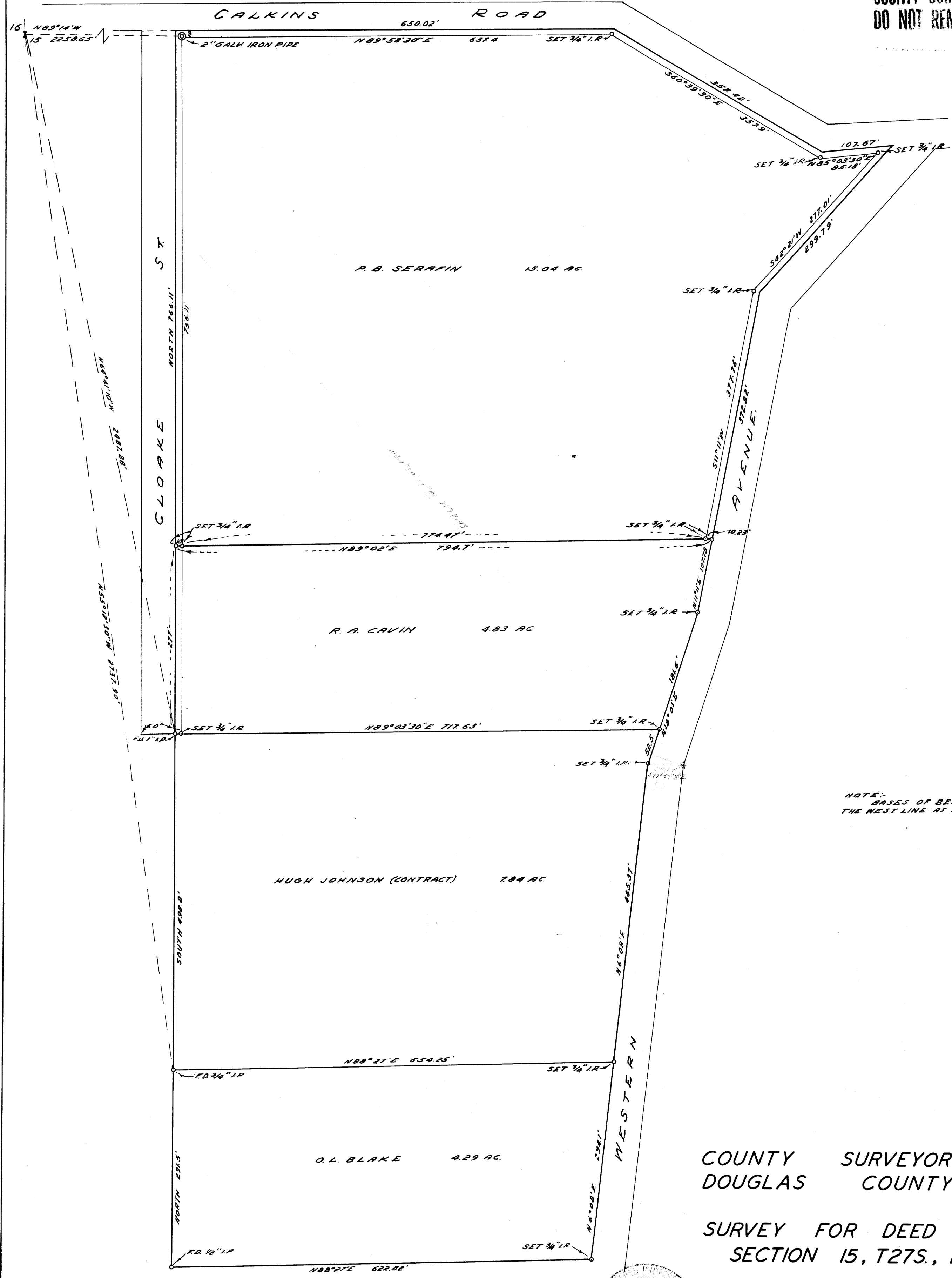


COUNTY SURVEYORS FILE DATA  
DO NOT REMOVE FROM OFFICE

M 8 - 20



NOTE: BASES OF BEARING NORTH, ALONG THE WEST LINE AS PER RECORD

COUNTY SURVEYOR'S OFFICE  
DOUGLAS COUNTY, OREGON

SURVEY FOR DEED DESCRIPTION,  
SECTION 15, T27S., R6W., W.M.



BEN B. IRVING  
SURVEYED MAY, 1955  
COUNTY SURVEYOR  
SCALE 1" = 100'  
SURVEYED FOR EMMA BRIGGS

COUNTY SURVEYORS FILE DATA  
DO NOT REMOVE FROM OFFICE

MAP FILE M 8 - 20