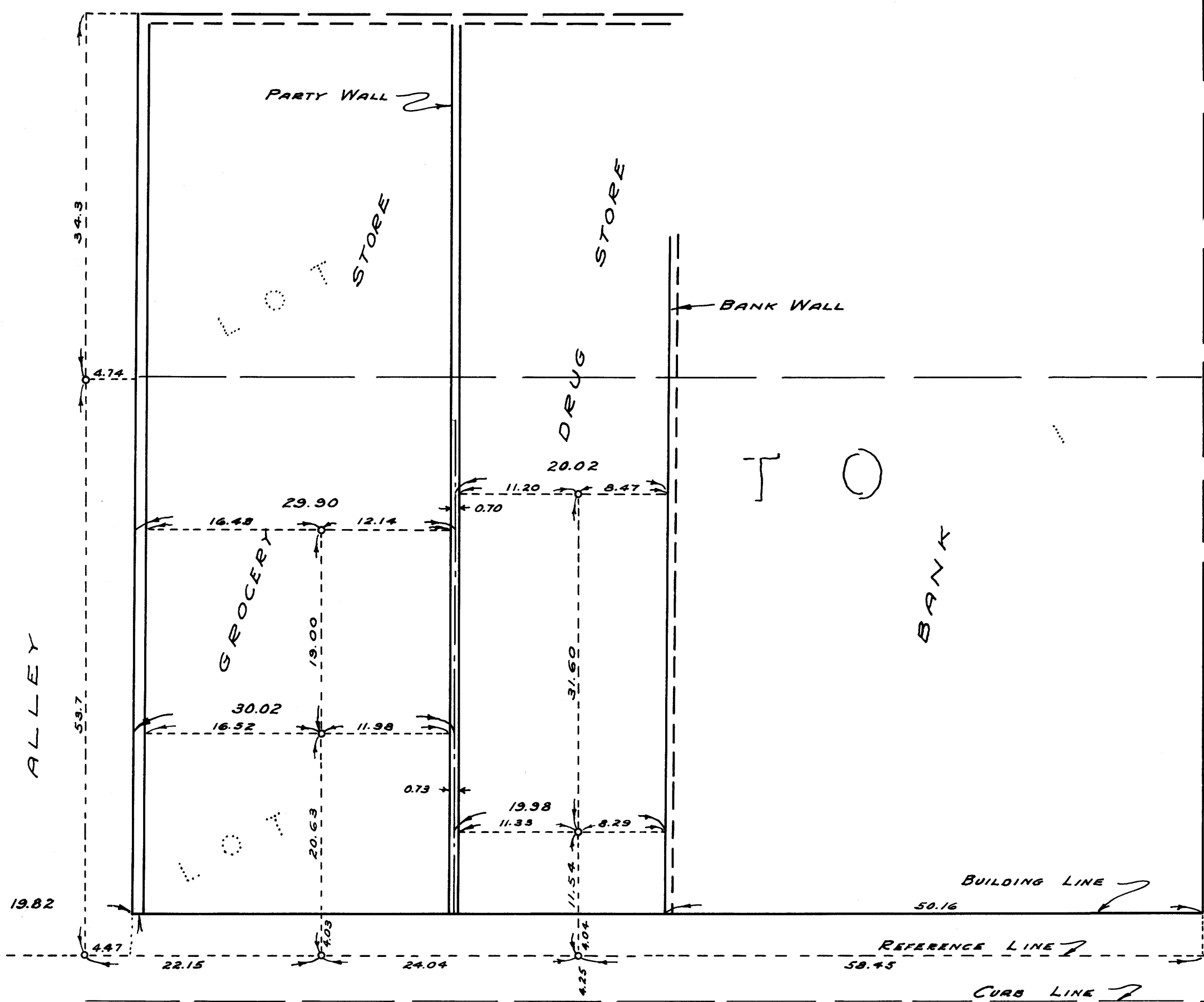


COUNTY SURVEYORS FILE DATA
DO NOT REMOVE FROM OFFICE

RAILROAD

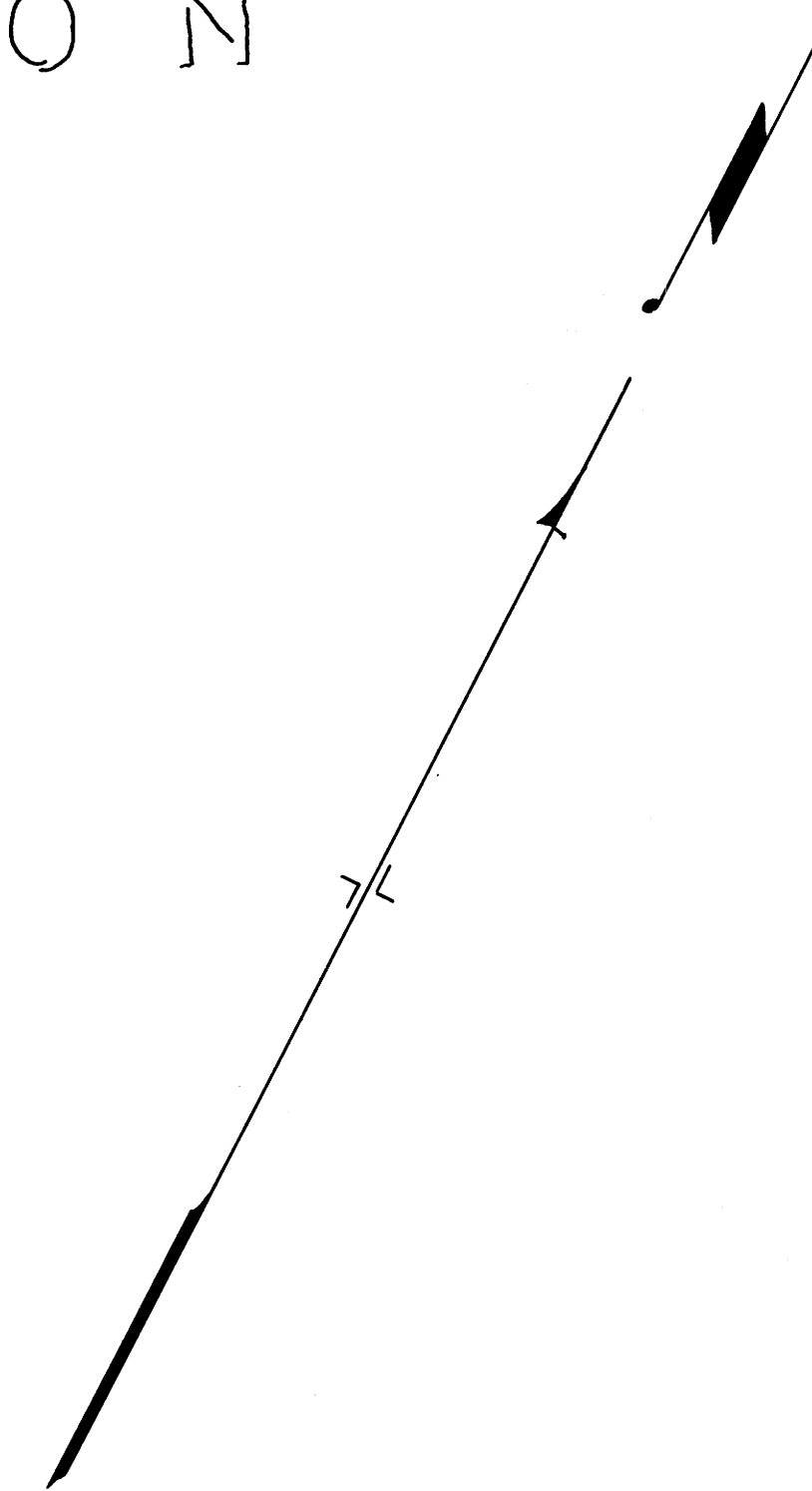
ADDITION

BLOCK OFFICE



ST.

SECOND



LOCUST

OAKLAND

ST.

COUNTY SURVEYOR'S OFFICE
DOUGLAS COUNTY, OREGON

SEC 4 - T25 R5

SURVEY TO LOCATE PARTY WALL

BEN B. IRVING COUNTY SURVEYOR
SURVEYED NOV. 24, 1954 SCALE 1"=10'
SURVEYED FOR R. D. BRIDGES



COUNTY SURVEYORS FILE DATA
DO NOT REMOVE FROM OFFICE

73.3
BUILDING TO BUILDING