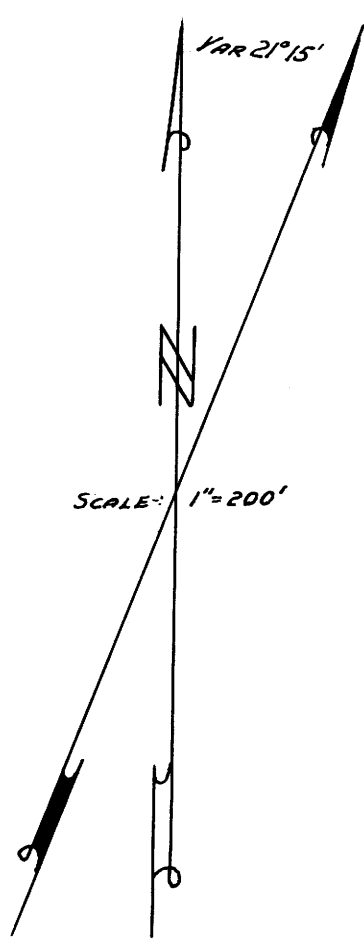
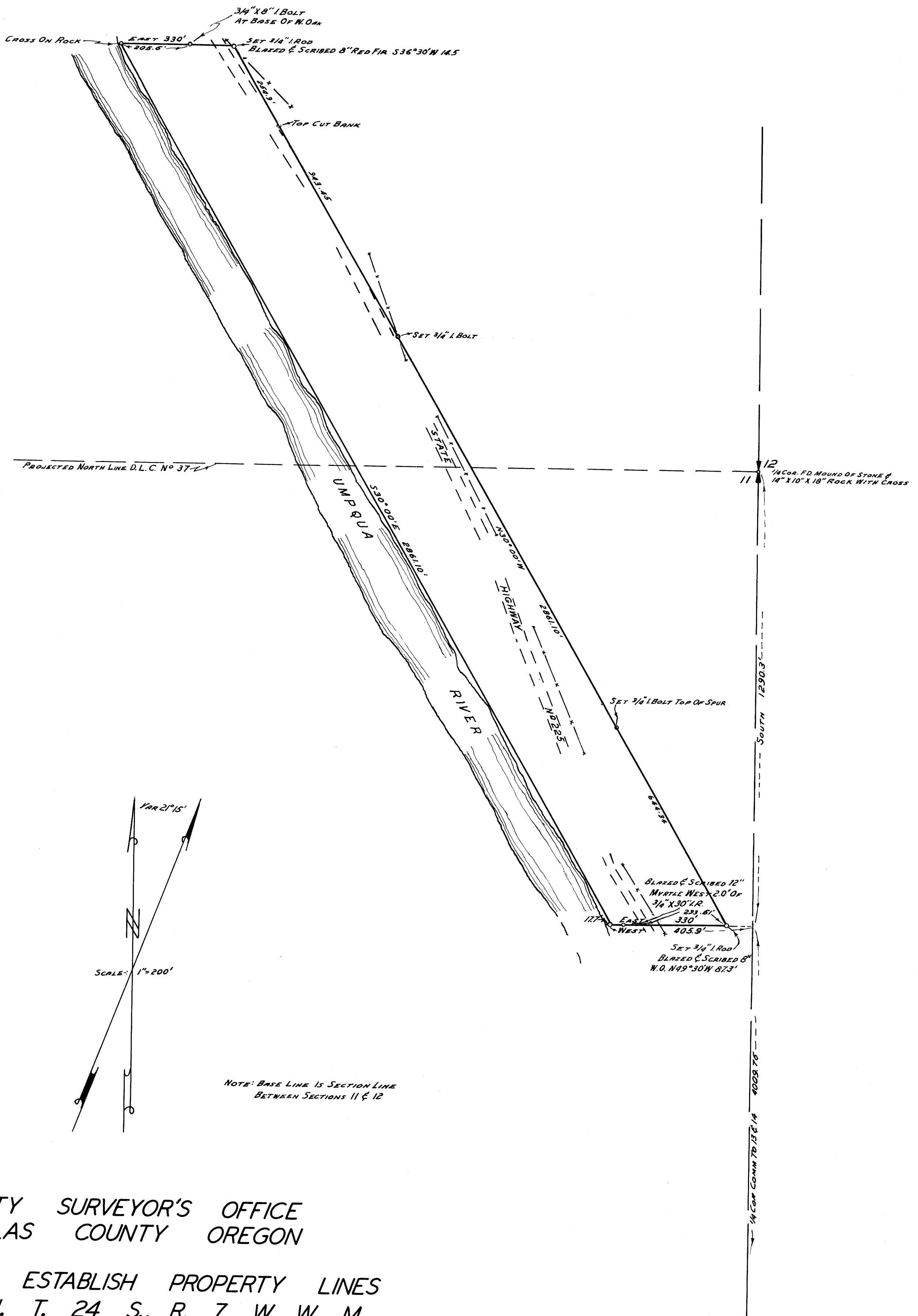


COUNTY SURVEYORS FILE DATA
DO NOT REMOVE FROM OFFICE

M 8-15



NOTE: BASE LINE IS SECTION LINE BETWEEN SECTIONS 11 & 12

COUNTY SURVEYOR'S OFFICE
DOUGLAS COUNTY OREGON

SURVEY TO ESTABLISH PROPERTY LINES
SECTION 11, T. 24 S., R. 7 W. W. M.

FOR OREGON STATE GAME COMMISSION

BEN B. IRVING COUNTY SURVEYOR
BY J. W. BYRON DEPUTY
SURVEYED JULY 20-28, 1954

REGISTERED
OREGON
LAND SURVEYOR

James W. Byron

NOV. 6, 1953
JAMES W. BYRON
303

COUNTY SURVEYORS FILE DATA
DO NOT REMOVE FROM OFFICE