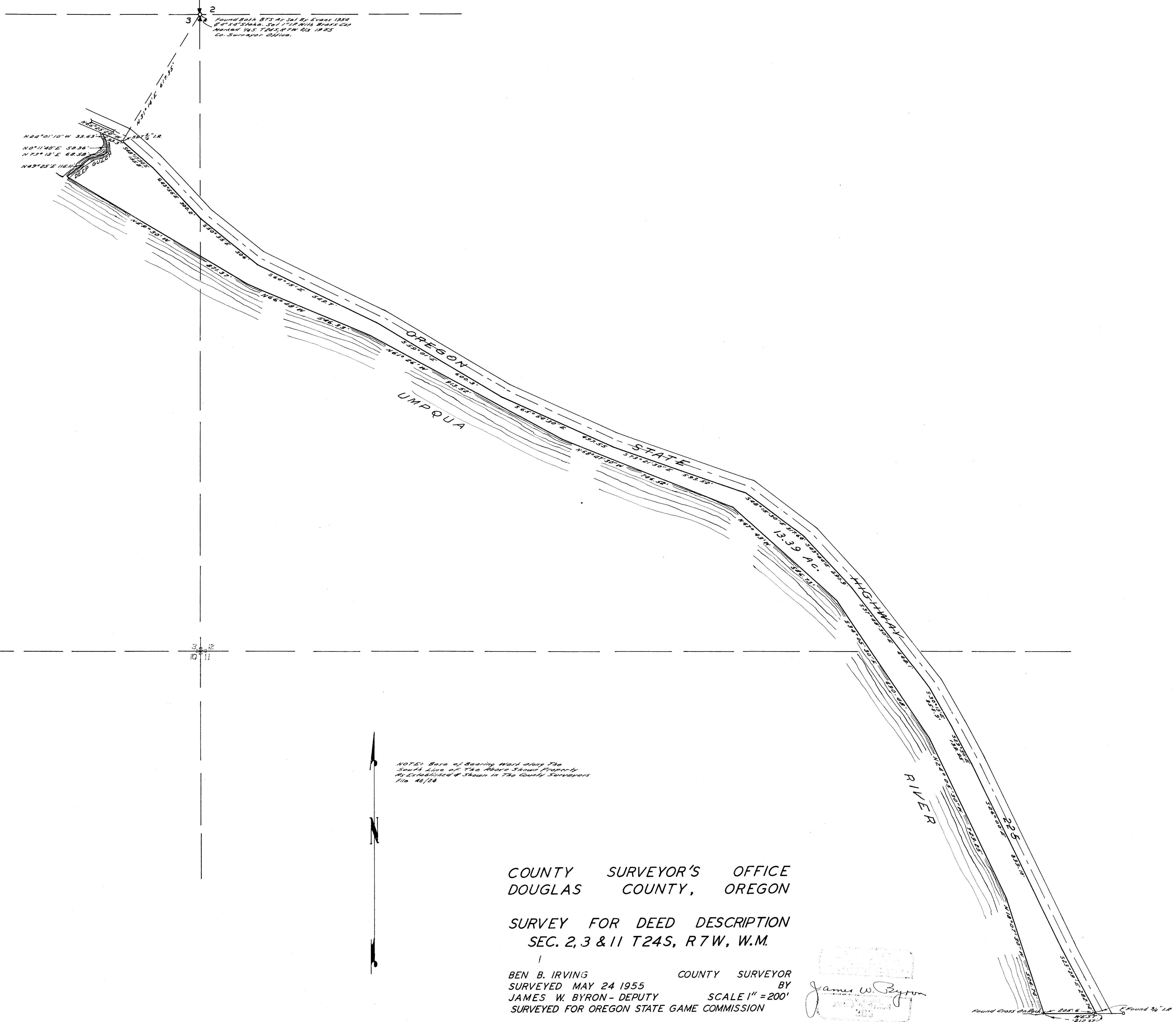


COUNTY SURVEYORS FILE DA
DO NOT REMOVE FROM OFF



N84°01'10"W 33.83'
 N0°11'40"E 58.36'
 N73°13'E 68.38'
 N49°25'E 116.00'

2
 3
 Found Bolt BTS As Set By Evans 1950
 6" x 1/8" Steel, Set 1/4" High, Brass Cap
 Wooden Box T24S, R7W Q2 1983
 Co. Surveyor Office.

NOTE: Base of Bearing West along The
 South Line of The Above Shown Property.
 As Established & Shown in The County Surveyors
 File 46/24

COUNTY SURVEYOR'S OFFICE
 DOUGLAS COUNTY, OREGON

SURVEY FOR DEED DESCRIPTION
 SEC. 2, 3 & 11 T24S, R7W, W.M.

BEN B. IRVING COUNTY SURVEYOR
 SURVEYED MAY 24 1955 BY
 JAMES W. BYRON - DEPUTY SCALE 1" = 200'
 SURVEYED FOR OREGON STATE GAME COMMISSION

James W. Byron

COUNTY SURVEYORS FILE DA
 DO NOT REMOVE FROM OFF