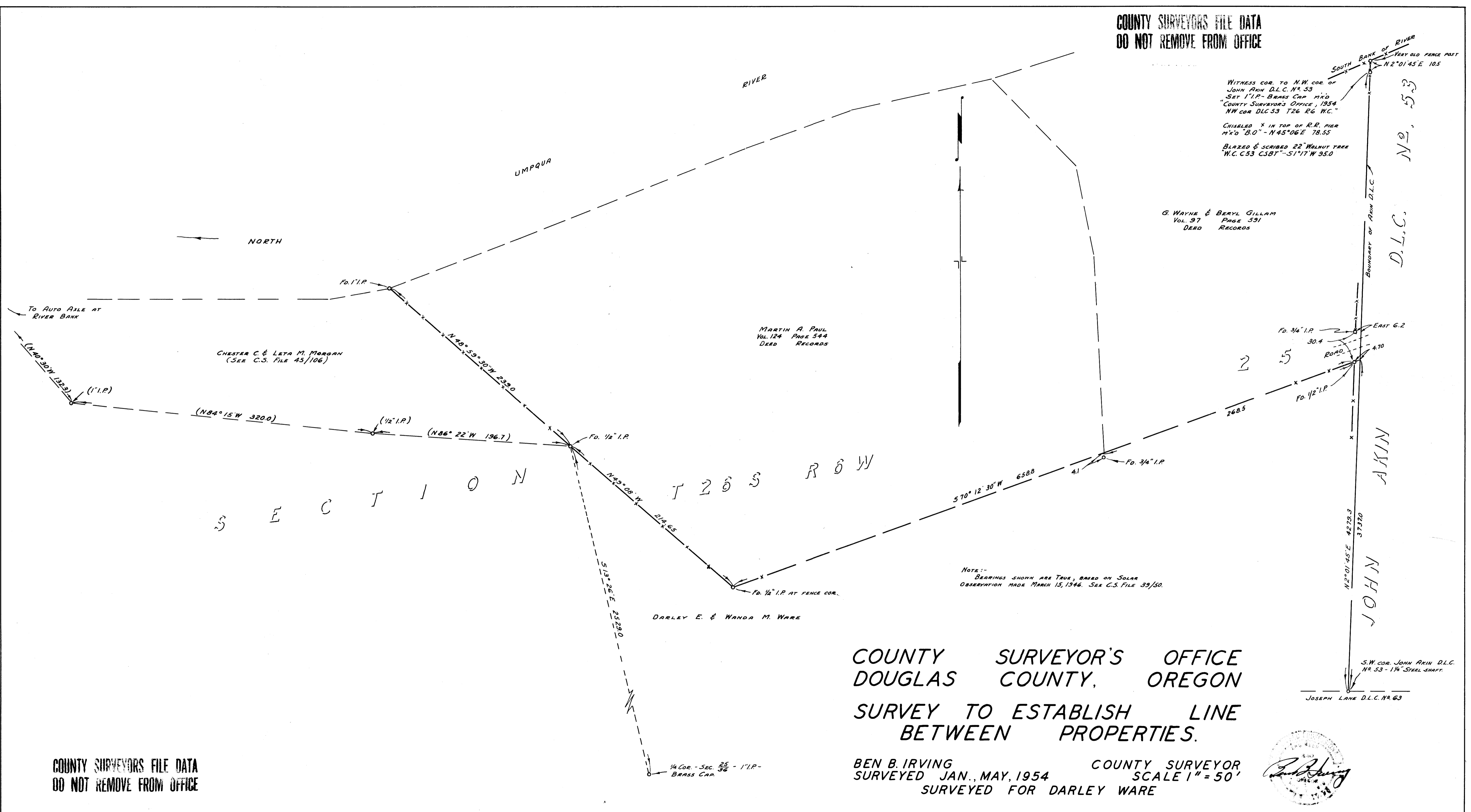


COUNTY SURVEYORS FILE DATA  
DO NOT REMOVE FROM OFFICE



WITNESS COR. TO N.W. COR. OF  
JOHN ARIN D.L.C. NO. 53  
SET 1" I.P. - BRASS CAP M'X'D  
COUNTY SURVEYOR'S OFFICE, 1954  
NW COR. D.L.C. 53 T26 R6 W.C.

CHISELED X IN TOP OF R.R. PIER  
M'X'D "B.O." - N45°06'E 78.55

BLAZED & SCRIBED 22" WALNUT TREE  
W.C. C53 CSBT - S1°17'W 35.0

G. WAYNE & BERYL GILLAM  
VOL. 97 PAGE 591  
DEED RECORDS

MARTIN A. PAUL  
VOL. 124 PAGE 544  
DEED RECORDS

CHESTER C. & LETA M. MORGAN  
(SEE C.S. FILE 45/106)

DARLEY E. & WANDA M. WARE

NOTE:-  
BEARINGS SHOWN ARE TRUE, BASED ON SOLAR  
OBSERVATION MADE MARCH 15, 1946. SEE C.S. FILE 39/50.

COUNTY SURVEYOR'S OFFICE  
DOUGLAS COUNTY, OREGON

SURVEY TO ESTABLISH LINE  
BETWEEN PROPERTIES.

BEN B. IRVING COUNTY SURVEYOR  
SURVEYED JAN., MAY, 1954 SCALE 1" = 50'  
SURVEYED FOR DARLEY WARE



COUNTY SURVEYORS FILE DATA  
DO NOT REMOVE FROM OFFICE