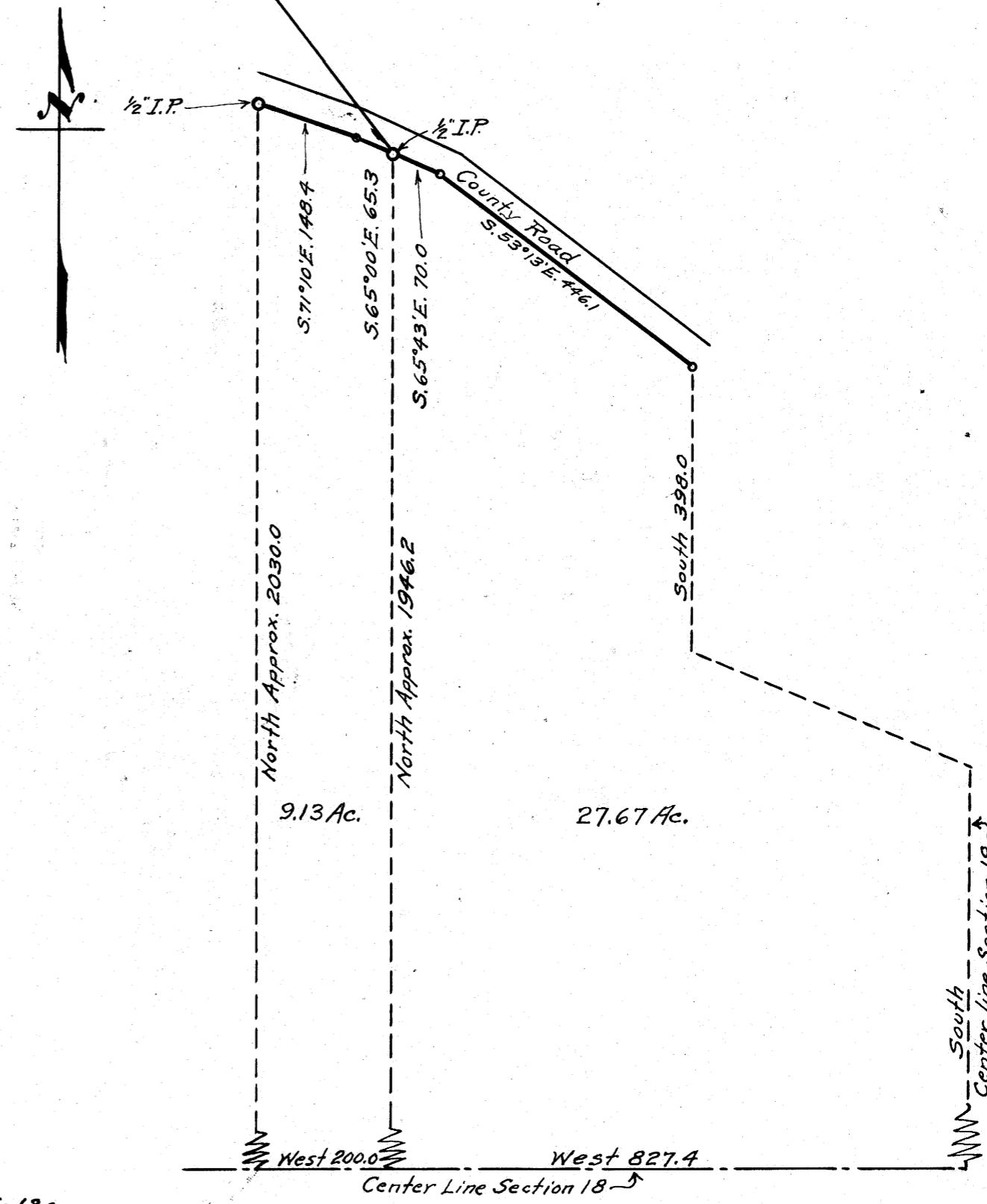


Note —
Dotted lines not Surveyed only figured.



COUNTY SURVEYORS OFFICE
DOUGLAS COUNTY, OREGON.
 Survey for
 Fred W. Daugherty
 Section 18, T. 32 S., R. 4 W. W.M.
 Geo. J. Wenderoth, deputy. March 1953
 Scale 1" = 200 ft.

REGISTERED
OREGON
 LAND SURVEYOR

Geo. J. Wenderoth

MARCH 10, 1944
 George J. Wenderoth
 5

COUNTY SURVEYORS OFFICE
DO NOT REMOVE FROM